

Kingsford to Centennial Park Walking and Cycling Improvements

Upcoming work June 2023

We are continuing the construction work along the project alignment to build the new cycleway and footpath improvements. This notice summarises our expected works during June.

Upcoming work – standard hours

In June we will be:

- Continuing road and electrical work on Doncaster Avenue between Anzac Parade and Day Avenue – **up to 20 days of work**
- Starting to spray seal and re-surface the cycleway along:
 - Doncaster Avenue between Anzac Parade and Day Avenue – **up to 10 days of work**
 - Houston Road between Day Avenue and Barker Street – **up to 5 days of work**
- Starting road resheeting work on Doncaster Avenue between Anzac Parade and Day Avenue – **up to 10 days of work**
- Starting landscaping work on Doncaster Avenue and Houston Road between Alison Road and Barker Street – **up to 10 days of work**

Please refer to the maps overleaf for detailed locations of upcoming work.

Our standard construction hours are Monday to Friday, 7am to 6pm and Saturday, 7.30am to 3.30pm. Work is dependant on weather and site conditions and is subject to change.

Upcoming work – out of hours

Most work will be completed during the day, however, to maintain safety for road users and workers, and to keep people moving on local roads, we need to carry out some of our work outside normal construction hours.

This work will occur up to **five nights a week between 7pm and 5am**. We will provide a **two night break** each week.

Our work is dependent on weather and site conditions. We do not work public holidays.

Upcoming out of hours activity includes:

- Starting electrical work on Doncaster Avenue between Bowral and Todman Avenue – **up to two nights of work**
- Removing and pouring concrete kerbing, footpaths and medians on Day Avenue between Doncaster Avenue and Houston Road – **up to 15 nights of work**
- Landscaping works on Day Avenue between Doncaster Avenue and Houston Road – **up to one night of work**

Minimising community impact

Our work activities will require the use of machinery that generates noise and vibration. Equipment used for these activities include saw-cutter, excavator, concrete truck, compaction equipment, vacuum truck, and hand and power tools.

If work is required out of hours, we will also use mobile lighting towers.

To minimise the impact of this work we will:

- monitor noise periodically so we can manage any potential impacts and adjust our work as required
- fit equipment with devices to minimise noise, particularly non-tonal reversing beepers.

In addition, at night we will also:

- complete the noisiest activities such as saw-cutting and jackhammering by midnight
- direct temporary lighting down and away from houses
- turn off machinery when not in use
- use noise blankets to minimise noise, where feasible.

Scan the QR code to visit
the project webpage



We will work with residents near this work to minimise impacts and all work will be carried out in line with project environmental approvals.

There may be some parking removal associated with these works. Residents will be notified in advance.

Site compounds

Site compounds were established in 2022 and will continue to be used throughout the project for the storage of materials and equipment, site offices and work amenities.

Our site compound may be used during our standard and out of hours work and plant and machinery may be in operation during this time.

Currently, our main compound is located on Bass Street at the intersection of Anzac Parade.

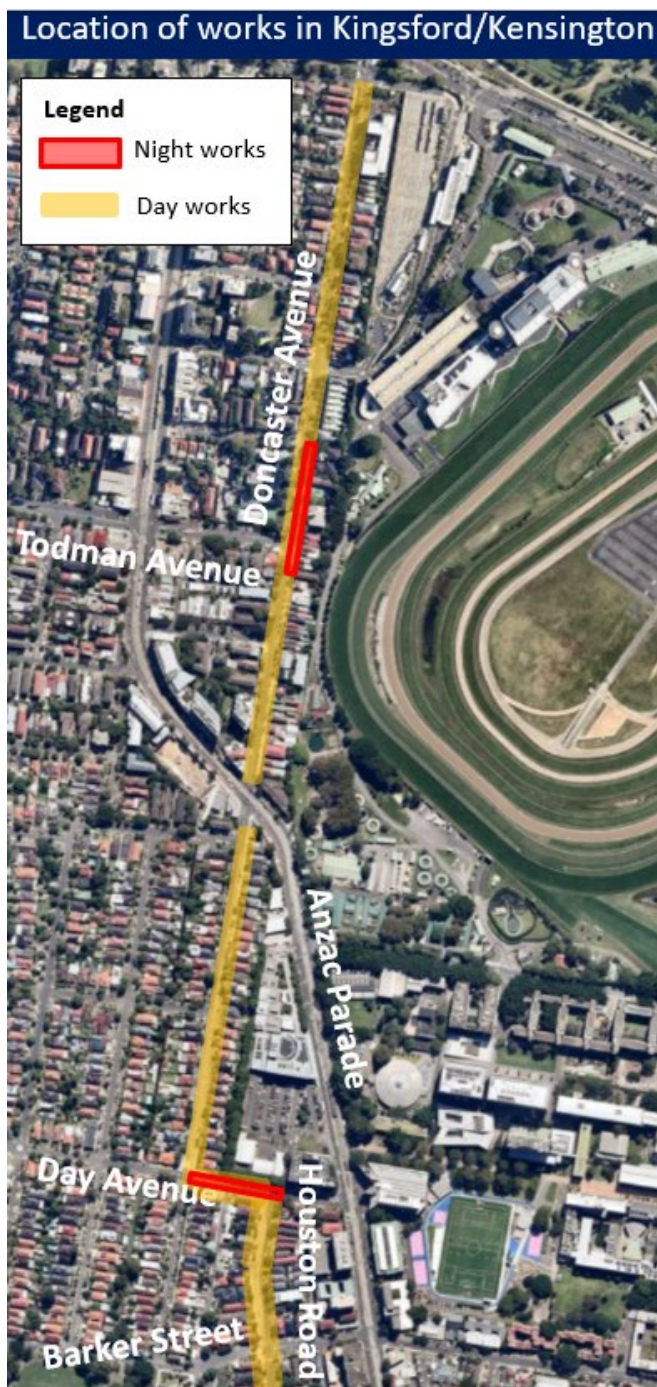
Traffic and pedestrian path changes

There will be temporary lane closures to ensure the safety of road users and workers and temporary changes to parking.

There may be partial footpath closures near our work area and alternative path and signs will be in place.

We may also have detours in place for some of our work. Properties affected by these detours will be notified directly.

Please allow extra travel time, keep to speed limits and follow signs and traffic controller directions. For the latest traffic updates, call 132 701, visit livetraffic.com or download the Live Traffic NSW app.



Contact us

If you have any questions or would like to sign up for regular email construction updates, please contact our delivery partner, Burton Contractors:

1800 650 031

K2CP-community@burtoncontractors.com.au

nswroads.work/k2cp

Translation



If you require the services of an interpreter, please contact the Translating and Interpreting Service on **131 450** and ask them to contact us on 1800 650 031.