

## Investigation work continues on Mamre Road between Erskine Park Road and Kerrs Road from Thursday 1 June 2023

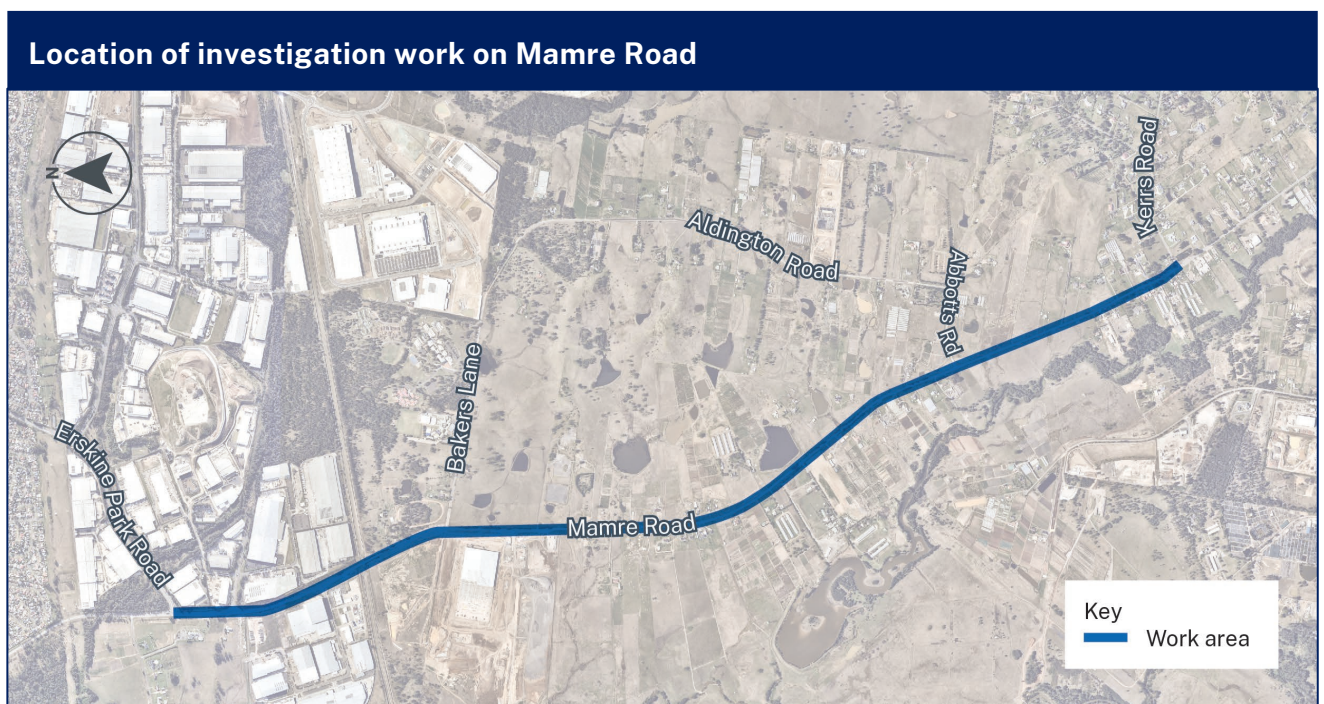
Transport for NSW | May 2023

### What we are doing

Transport for NSW will continue to carry out investigation work on Mamre Road between Erskine Park Road and Kerrs Road.

Our work will include detailed land surveys, subsurface utility location and investigating ground conditions. This involves soil sampling, potholing, drilling, coring, and digging.

These investigations are being carried out to collect information to inform further planning and design of the Mamre Road upgrade project. The map below shows the area of work.



### Our work schedule

Work will continue to take place from **Thursday 1 June** to **Monday 31 July 2023**, weather permitting.

You will see workers on site during the day between **7am** and **6pm Monday to Friday** and **Saturdays** between **8am** and **1pm**. We will not work on public holidays.

Noisy night work will continue along the road alignment, until **Thursday 15 June 2023**, weather permitting. This work involves taking core samples of pavement and boreholes, on completion the holes will be filled and restored. Every effort will be made to keep the noise to a minimum and work within the approved noise limits.

## How will the work affect you?

While our work may be noisy at times, we will do everything we can to minimise its impact, including turning off machinery when not in use.

Access to some properties may be limited during our work. We will notify properties prior to work commencing, should access be impacted. Where possible, we will discuss alternative access arrangements with property owners.

## Traffic changes

While we will try minimising disruption to traffic, temporary traffic changes will be required at times to ensure the work zone is safe. Partial lane closures and a reduced 40km/h speed limit will be in place near our work area.

Please keep to speed limits and follow the direction of traffic controllers and signs. For the latest traffic updates, you can call 132 701, visit [livetraffic.com](http://livetraffic.com) or download the Live Traffic NSW App.

Thank you for your patience during this important work

### Contact us

If you have any questions or would like more information regarding this work, please contact our project team:



1800 696 564 – option 2



[mamreroadupgradeS2@transport.nsw.gov.au](mailto:mamreroadupgradeS2@transport.nsw.gov.au)



[nswroads.work/mamreroadupgrade](http://nswroads.work/mamreroadupgrade)



If you need help understanding this information, please contact the Translating and Interpreting Service on **131 450** and ask them to call us on 1800 696 564