

Investigation work on Mamre Road between Erskine Park Road and Kerrs Road from Monday 5 December 2022

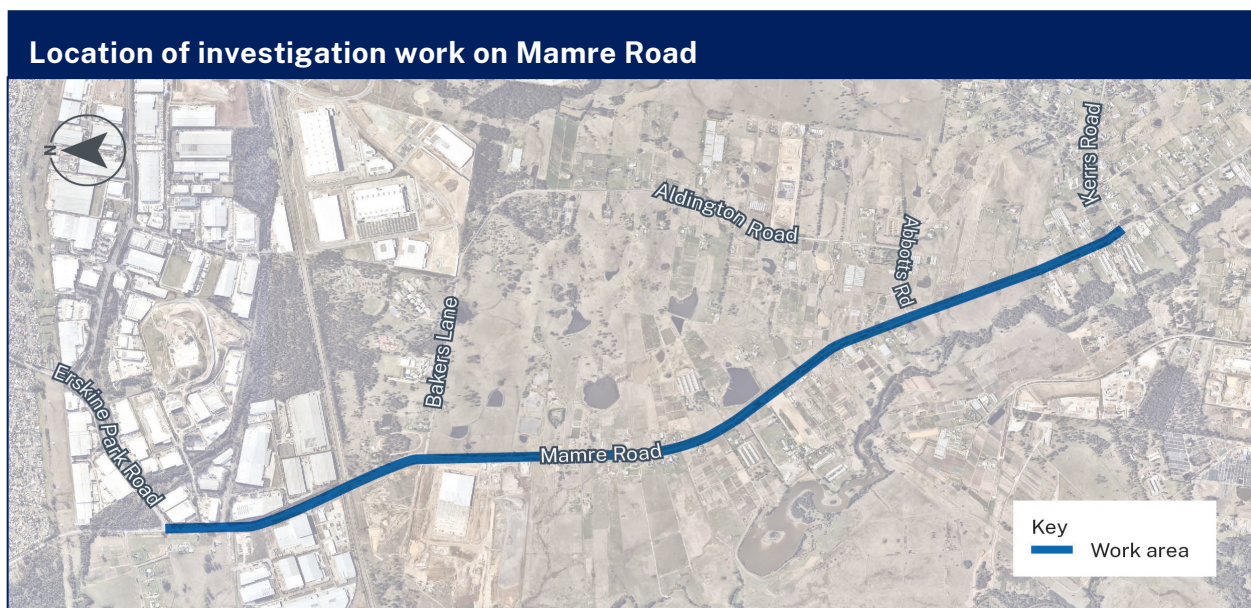
Transport for NSW | November 2022

What we are doing

Transport for NSW will carry out investigation work on Mamre Road between Erskine Park Road and Kerrs Road.

Our work will include detailed land surveys, subsurface utility location and investigating ground conditions. This involves soil sampling, potholing, drilling, coring, and digging.

These investigations are being carried out to collect information to inform further planning and design of the Mamre Road upgrade project. The map below shows the area of work.



Our work schedule

Work is scheduled to take place from **Monday 5 December** to **Tuesday 28 February 2023**, weather permitting.

You will see workers on site during the day between **7am** and **6pm Monday to Friday** and **Saturdays** between **8am** and **1pm** **except during the following shutdown periods:**

- Friday 16 December to Tuesday 3 January 2023
- Wednesday 25 January to Monday 30 January 2023

We may also work up to three night shifts a week from **8pm** to **5am** between **Monday** and **Saturday**. We will not work on Sundays and public holidays.

How will the work affect you?

Our work may be noisy at times, we will do everything we can to minimise its impact, including turning off machinery when not in use.

Access to some properties may be limited during our work. We will notify properties prior to work commencing, should access be impacted. Where possible, we will discuss alternative access arrangements with property owners.

Traffic changes

While we will try minimise disruption to traffic, temporary traffic changes will be required at times to ensure the work zone is safe. Partial lane closures and a reduced 40km/h speed limit will be in place near our work area.

Please keep to speed limits and follow the direction of traffic controllers and signs. For the latest traffic updates, you can call 132 701, visit livetraffic.com or download the Live Traffic NSW App.

Thank you for your patience during this important work

Contact us

If you have any questions or would like more information regarding this work, please contact our project team:



1800 696 564 – option 2



mamrroadupgradeS2@transport.nsw.gov.au



nswroads.work/mamrroadupgrade



If you need help understanding this information, please contact the Translating and Interpreting Service on **131 450** and ask them to call us on 1800 696 564