

Community Notification – Out of hours work

Regional Rail – Mindyarra Maintenance Centre

2-3 December 2023



Australian Government



Transport for NSW acknowledges the Wiradjuri Nation as the Traditional Custodians of the lands on which we work and pays respect to Elders past and present.

We are replacing the ageing NSW regional rail fleet of XPT, XPLORER and Endeavour trains.

The new trains will provide improved safety, accessibility, facilities and reliability for customers who travel from many NSW regional centres to Sydney, as well as Canberra, Melbourne and Brisbane.

To support the new fleet, a purpose-built maintenance centre is being constructed in Dubbo. Momentum Trains is delivering the Regional Rail Project on behalf of Transport for NSW.

What work are we doing?

During an upcoming scheduled rail line shutdown, we will be carrying out work within the rail corridor, including signalling works, excavations, and survey works.

Equipment to be used includes, but is not limited to:

- heavy and light vehicles
- excavators and hi rail excavators
- compaction equipment, trucks and trailers
- water carts
- rail saw
- hand tools, rail tamper and lighting towers.

Rail line shutdown to carry out work

To minimise disruption to the rail network and ensure the safety of workers and the community, we will carry out this work during a scheduled rail line shutdown (additional to the approved work hours).

The rail line shutdown is scheduled from 8am Saturday 2 December to 7am Monday 4 December, weather permitting.

During this time, we will be taking the opportunity to **work continually throughout the day and night** to carry out work within the rail corridor safely.

What will this mean for you?

You may notice:

- Workers and vehicles
- Some lights from lighting towers at night
- Noise from some of the construction activities.

Train services may be affected. Please contact Transport via the contact details overleaf.

Managing our impacts

We will take steps to reduce noise and impacts on the community and the environment.

This includes and is not limited to:

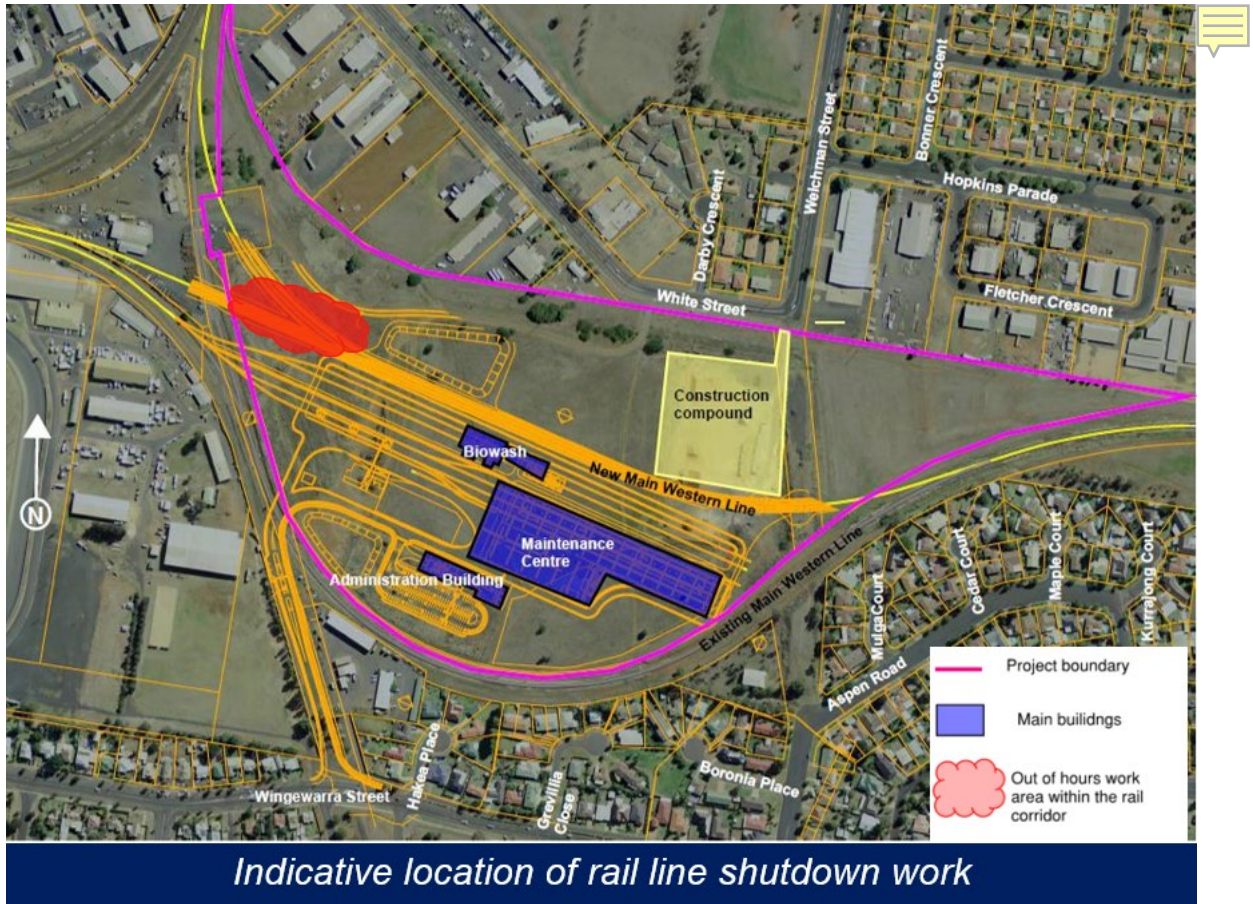
- Using non-tonal reversing beepers
- Instructing workers to keep noise to a minimum.

Approved work hours

Outside the rail line shutdown, work at the maintenance centre will continue during standard work hours and approved out of hours work times for the project, which are from **7am to 6pm, Monday to Saturday and 8am to 6pm, Sunday, weather permitting.**



Location of work area



More information

Working closely with the local community is a priority for Transport for NSW and Momentum Trains. We will keep you up to date about upcoming work, with regular notifications and updates on our website.

If you have questions or concerns or would like more information about the Regional Rail Project, please contact us using the details below.

Contact us



Project Infoline **1800 684 490**
24-hour Construction Response Line
1800 775 465



projects@transport.nsw.gov.au



www.transport.nsw.gov.au/projects/current-projects/regional-rail-mindyarra-maintenance-centre



www.transport.nsw.gov.au/projects/current-projects/regional-rail



For the latest Train services updates:
Call Transport Info on **131 500** or visit
<https://transportnsw.info/>



Interpreter service

For languages other than English call 131 450
Arabic • Greek • Hindi • Mandarin • Vietnamese

لطلب خدمة الترجمة الشفهية للغات غير الإنجليزية اتصل
بالرقم **131 450**

Για υπηρεσίες διερμηνείας σε άλλες γλώσσες εκτός από
τα Αγγλικά καλέστε το **131 450**

अंग्रेजी के अतिरिक्त अन्य भाषाओं के लिए दुभाषिया सेवा
131 450 पर कॉल करें

获取英语以外的其他语言口译协助服务可以致电**131 450**

Để có dịch vụ thông ngôn cho các ngôn ngữ khác tiếng
Anh, gọi số **131 450**

www.transport.nsw.gov.au/privacy-statement#Your_Privacy