

# Mitchell Highway and Thompson Street intersection upgrade

Newell Highway Upgrade - New Dubbo Bridge  
May 2023



Australian Government



Transport for NSW acknowledges the Wiradjuri people as the Traditional Custodians of the lands on which we work and pay respects to Elders past and present.

Together, the Australian and New South Wales Governments are investing \$220.2 million in the New Dubbo Bridge project to improve traffic congestion in Dubbo and enhance access across the Macquarie Rive during flood events.

As part of these works, Transport for NSW is upgrading the intersection of Mitchell Highway and Thompson Street.

The upgrade will improve safety at this intersection, especially during flood events.

## What work are we doing?

We are widening the road shoulder on the Mitchell Highway to improve safety and access for road users including heavy vehicles.

Work includes:

- Installation of new kerb and guttering
- Road asphaltting

## When and where we'll be working

We'll be working on the Mitchell Highway at the intersection of Thompson Street from **Monday 29 May until Monday 12 June**, weather permitting.

- Between Monday 29 May until Friday 9 June, work hours are **7am to 6pm**.
- On Sunday 18 June, work hours are **6pm to 6am**.

## What will this mean for you?

- The speed limit will be reduced to 40km/h for the duration of the work
- You may notice noise from machinery and equipment
- From **6am to 6pm on Sunday 18 June**, the eastbound lane of the Mitchell Highway at this location will be closed to traffic. Traffic travelling eastbound, towards Dubbo, will need to follow a detour on Thompson Street and Whylandra Street.

## Managing our impacts

We aim to manage our work to avoid impacts to the community.

This includes:

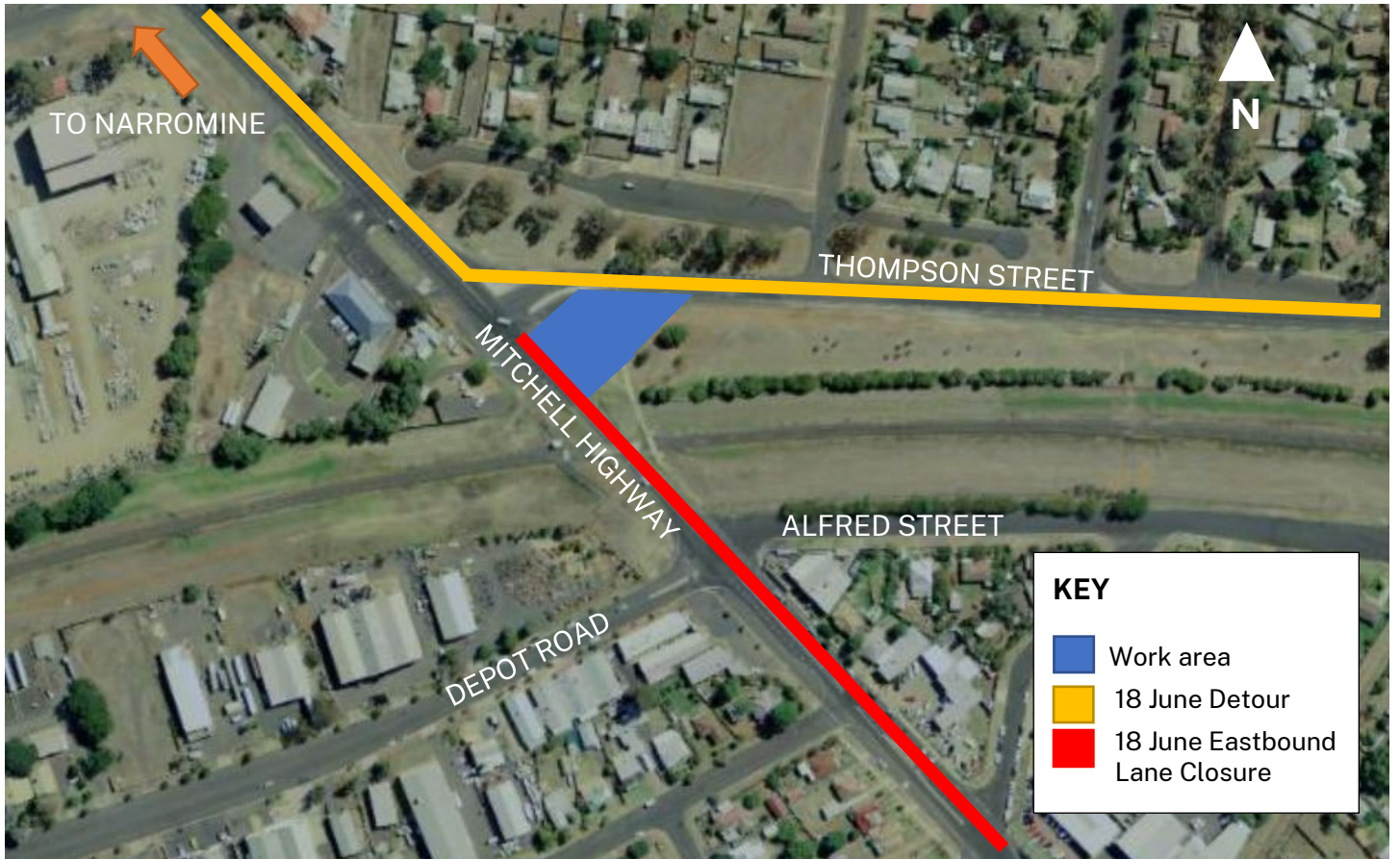
- Scheduling weekend and night work to minimise impact to local businesses
- Reducing our noise as much as possible
- Targeted lighting to minimise light spill
- Turning off machinery and equipment when not in use.

Please keep to speed limits and follow the direction of traffic controllers and signs. For the latest traffic updates, you can call 132 701, visit [livetraffic.com](http://livetraffic.com) or download the Live Traffic NSW App.

Thank you for your patience during this important work.



## Location of work area



## Contact us



Project Infoline **1800 803 818**



Email us at  
**dubprojects@transport.nsw.gov.au**



Visit the online portal go to  
**nswroads.work/dubbo**



Write to us at **PO Box 336**  
**Parkes NSW 2879**



## Interpreter service

For languages other than English call 131 450  
Arabic • Cantonese • Hindi • Mandarin • Vietnamese

لطلب خدمة الترجمة الشفهية للغات غير الإنجليزية اتصل بالرقم  
**131 450**

獲取英語以外的其他語言傳譯協助服務可以致電**131 450**

अंग्रेज़ी के अतिरिक्त अन्य भाषाओं के लिए दुभाषिया सेवा **131 450**  
पर कॉल करें

获取英语以外的其他语言口译协助服务可以致电**131 450**

Để có dịch vụ thông ngôn cho các ngôn ngữ khác tiếng Anh,  
gọi số **131 450**



Subscribe for updates at [dubprojects@transport.nsw.gov.au](mailto:dubprojects@transport.nsw.gov.au) [www.transport.nsw.gov.au/privacy-statement#Your\\_Privacy](http://www.transport.nsw.gov.au/privacy-statement#Your_Privacy)