

# Work continuing: Thompson, Whylandra, Bourke and River Streets in Dubbo

## Newell Highway Upgrade – New Dubbo Bridge project

December 2023



Australian Government



Transport for NSW acknowledges the Wiradjuri people as the Traditional Custodians of the lands on which we work and pays respect to Elders past and present.

The New Dubbo Bridge project will improve traffic congestion in Dubbo and enhance access across the Macquarie River during flood events.

Construction is continuing at various locations in Dubbo throughout the next eight weeks, led by our head contractor, Abergeldie Complex Infrastructure.

### What work are we doing?

- Commencement of river piling
- Continuation of delivery of girders that will help support the weight of the new bridge
- The first of the 123 girders will be laid using the 60-metre crane
- Ongoing construction of pile caps, piers and headstocks for the new bridge
- Continuation of utility relocation and upgrade work
- Utility investigations and traffic controls including barriers and temporary lane realignment.
- Commencement of earthworks and stormwater drain installation.

### Traffic changes

Crews will continue to relocate and install utilities at the intersection of **Bourke Street and River Street, Whylandra Street, River Street west and Chifley Drive.**

During **December 2023** and **January 2024**, there will be traffic changes including temporary detours, stop/go arrangements and temporary barrier installation.

We'll be working **7am to 6pm, Monday to Friday and 8am to 1pm, Saturday.**

### Nightwork

To minimise traffic impacts, some work may be completed at night from **6pm to 7am** in December and January for up to 25 shifts.

We will continue to work closely with the community and provide additional information and key dates of the nightwork. We will also meet with nearby residents to ensure we minimise the impacts of this work.

### What will this mean for you?

You may notice workers, vehicles, traffic controllers, signage, concrete barriers in the road shoulders and reduced speed limits of 40km/h in place.

There may also be footpath and lane closures, detours, noise from machinery and equipment, and an increase in deliveries and vehicle movements.

### Managing impacts of our work

- Schedule weekend and nightwork to minimise impact to local businesses
- Reducing our noise as much as possible
- Targeted lighting to minimise light spill
- Turning off machinery when not in use.

### Construction during Christmas, New Year and Australia Day

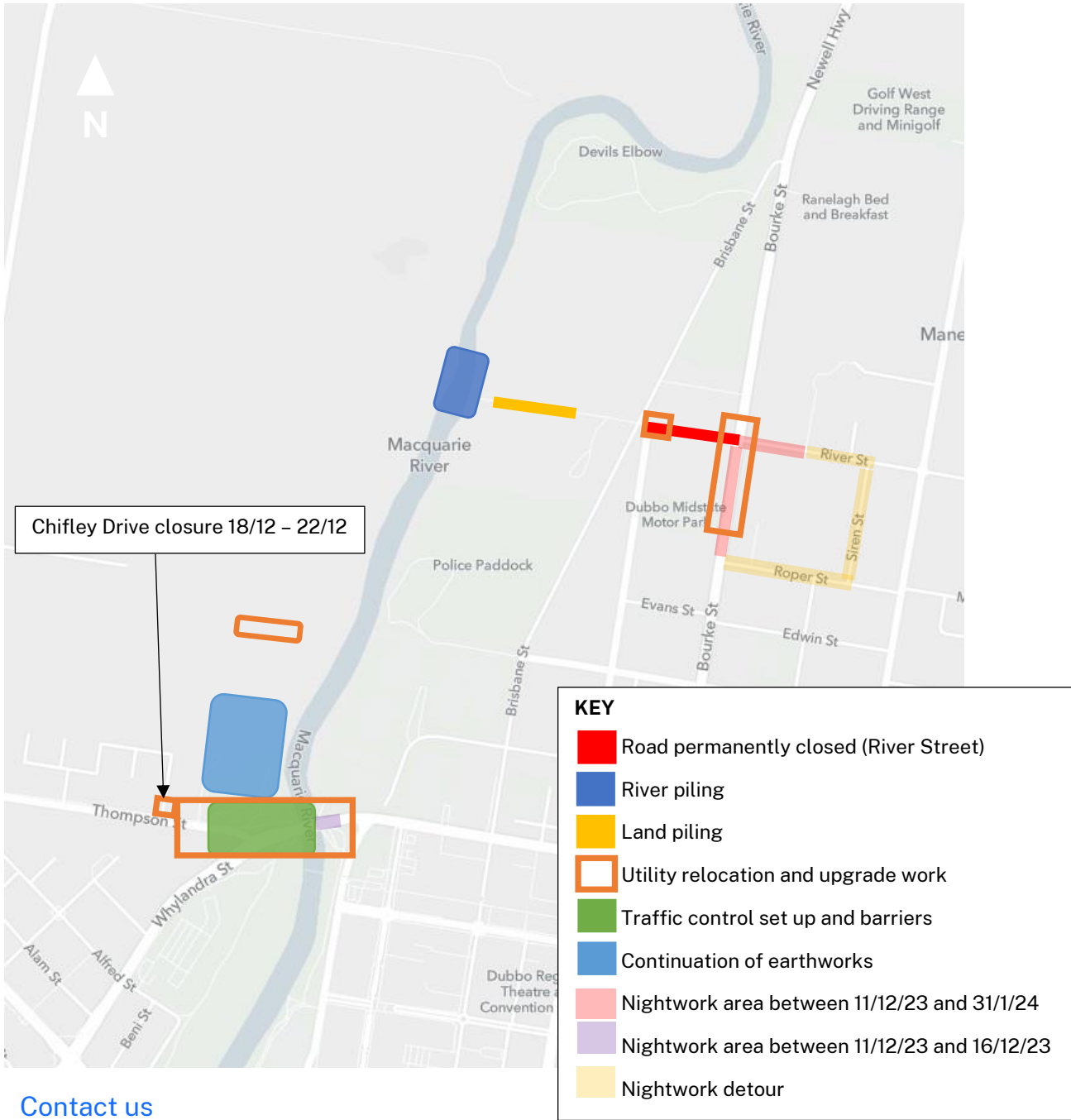
**Christmas and New Year:** construction works areas will close over the Christmas and New Year holiday period from **6pm Friday 22 December 2023** until **7am Monday 8 January 2024.**

**Australia Day:** construction sites will be closed for the Australia Day public holiday from **6pm Thursday 25 January** until **7am Monday 29 January 2024.**

While construction sites are closed, 24 hour security will take place to maintain site security.



## Location of work area



## Contact us



Call our Project Infoline **1800 803 818**



Email us at  
**dubboprojects@transport.nsw.gov.au**



Visit our webpage at  
**nswroads.work/dubbo**



Write to us at **PO Box 336**  
**Parkes, NSW 2870**



**For the latest traffic updates:**  
Call 132 701, visit [livetraffic.com](http://livetraffic.com) or  
download the app Live Traffic NSW



## Interpreter service

For languages other than English call 131 450  
Arabic • Greek • Hindi • Mandarin • Vietnamese

لطلب خدمة الترجمة الشفهية للغات غير الإنجليزية اتصل  
بالرقم **131 450**

Για υπηρεσίες διερμηνείας σε άλλες γλώσσες εκτός από  
τα Αγγλικά καλέστε το **131 450**

अंग्रेज़ी के अतिरिक्त अन्य भाषाओं के लिए दुभाषिया सेवा  
**131 450** पर कॉल करें

获取英语以外的其他语言口译协助服务可以致电**131 450**

Để có dịch vụ thông ngôn cho các ngôn ngữ khác tiếng  
Anh, gọi số **131 450**