



New Richmond Bridge and traffic improvements Stage 2

Investigation work in Richmond and North Richmond February 2023

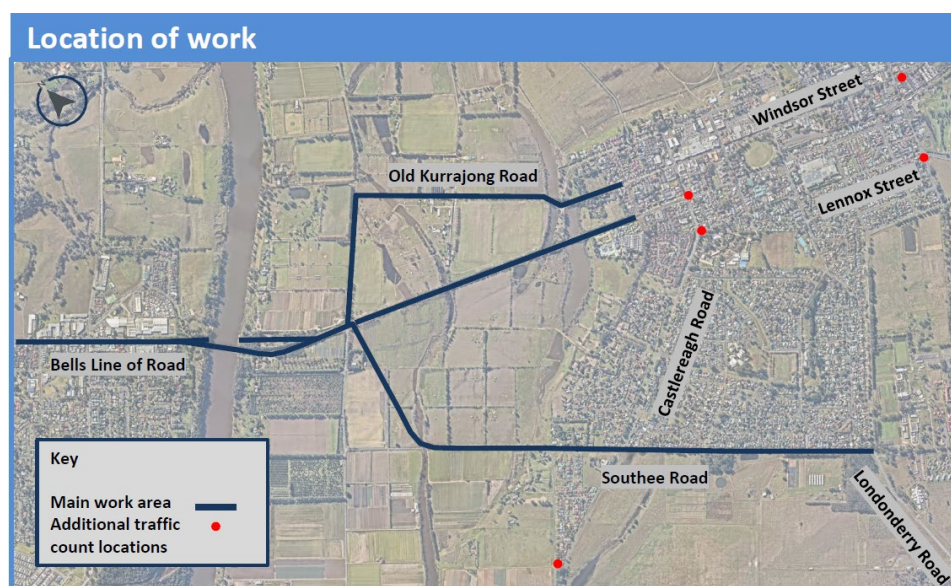
What we are doing

Over the next few months, Transport for NSW will be carrying out investigation work in the Richmond and North Richmond areas to inform design of Stage 2 of the New Richmond Bridge and traffic improvements project.

The investigations will include collecting traffic data such as intersection counts, queue length, travel time and origin destination surveys. The data will be collected using cameras and tube counters throughout the work area highlighted in the map below. Additional cameras will also collect data at the intersections of The Driftway with Londonderry Road and Blacktown Road as well as Blacktown Road and Racecourse Road.

We will also be conducting ground surveys and geotechnical work which includes drilling holes and digging pits to test soil and pavement composition. We will be using small tipper trucks, a truck mounted drilling rig, small excavators, survey vehicles, handheld concrete saw cutter, traffic control vehicles and signage to carry out this work.

Location of work



Our work schedule

Investigations are scheduled to commence from **Monday 6 February 2023** with traffic data collection expected to be complete by **Monday 13 February 2023**. Geotechnical investigations and survey are expected to be ongoing at various locations throughout the work area until **Friday 30 June 2023**. Work during the day will occur on weekdays between 7am and 6pm and Saturdays between 7am and 6pm.

There will be occasions when we may need to perform noisy works or work during the night. If your property could be impacted by nearby nightworks we will notify you one to two weeks before this work starts. Our night shift hours would be between 8pm and 7am from Sunday to Thursday. We will not work on public holidays.

How will the work affect you?

Some of our work needs to be carried out at night to minimise traffic disruptions and reduce safety risks to workers and motorists. It may be noisy at times, but we will do everything we can to minimise its impact, including completing the noisier tasks earlier in the shift and staging the work along different parts of the work zone to minimise disruption in the same area.

Traffic changes

While we will try minimising disruption to traffic, temporary traffic changes will be required at times to ensure the work zone is safe. Partial lane closures and a reduced speed limit may be in place. There may be some low impact work during the day where traffic closures are not required. Please keep to speed limits and follow the direction of traffic controllers and signs.

For the latest traffic updates, you can call 132 701, visit [livetraffic.com](https://www.livetraffic.com) or download the Live Traffic NSW App. Thank you for your patience during this important work.

Contact Us

If you have any questions or would like more information on the New Richmond Bridge and traffic improvements Stage 2 project, please contact our project team on 1800 370 778 or email richmondbridge@transport.nsw.gov.au.