

Out of hours work near Jesmond roundabout from Thursday 30 November

Newcastle Inner City Bypass – Rankin Park to Jesmond

November 2023



Australian Government



Transport for NSW acknowledges the Awabakal people of the Awabakal Nation as the Traditional Custodians of the lands on which we work and pays respect to Elders past and present.

The Australian and NSW governments are funding the Rankin Park to Jesmond section of the Newcastle Inner City Bypass.

Work is continuing on the 3.4 kilometre section of the bypass. Transport for NSW has engaged Fulton Hogan to finalise the design and construct this section of the bypass.

What work are we doing?

We will be carrying out general road and bridge construction which will include concrete pouring of structural elements and piling. Our continuing work at Jesmond also includes drainage work to install a new culvert and pipe network, utilities relocations including electrical works and permanent street lighting, road pavement construction and modifications to the traffic control systems to adjust traffic flow.

When and where we'll be working

Day work will continue to be carried out between **7am** and **6pm** from **Monday to Friday**, and **Saturday** between **8am** and **5pm**.

Night work will be required from **Thursday 30 November** until **Wednesday 31 January 2024** between **6pm** and **7am** from **Sunday to Thursday**, weather permitting.

There will be no work during the Christmas shutdown from Friday 22 December 2023, returning Monday 8 January 2024.

Work will be carried in or next to live traffic lanes or require the night-time isolation of services, so out of hours is the safest way to conduct this work.

What will this mean for you?

During night work there will be traffic control on site, temporary lane closures and machinery operating adjacent to or in the road lanes.

These will move locations, please take care, keep to the sign posted speed limits and follow the direction of traffic controllers.

For the latest traffic updates, you can call 132 701, visit livetraffic.com or check the Live Traffic App.

We work outside standard construction hours to:

- Improve safety by minimising the interactions between road users, pedestrians and workers
- Minimise delays and journey times for motorists and businesses.

Managing our impacts

There will be machinery and other plant and equipment working in different areas throughout the night work. The machinery and equipment generate light, noise and vibration. We will make every effort to minimise these impacts by:

- Turning off machinery and vehicles when not in use
- Using non-tonal reversing alarms
- Positioning of machines and directing temporary lighting down and away from homes
- Planning activities close to residents within standard construction hours and scheduling noisy activities earlier in the night, where possible
- Monitoring noise to manage any potential impacts and adjusting our work, where possible.

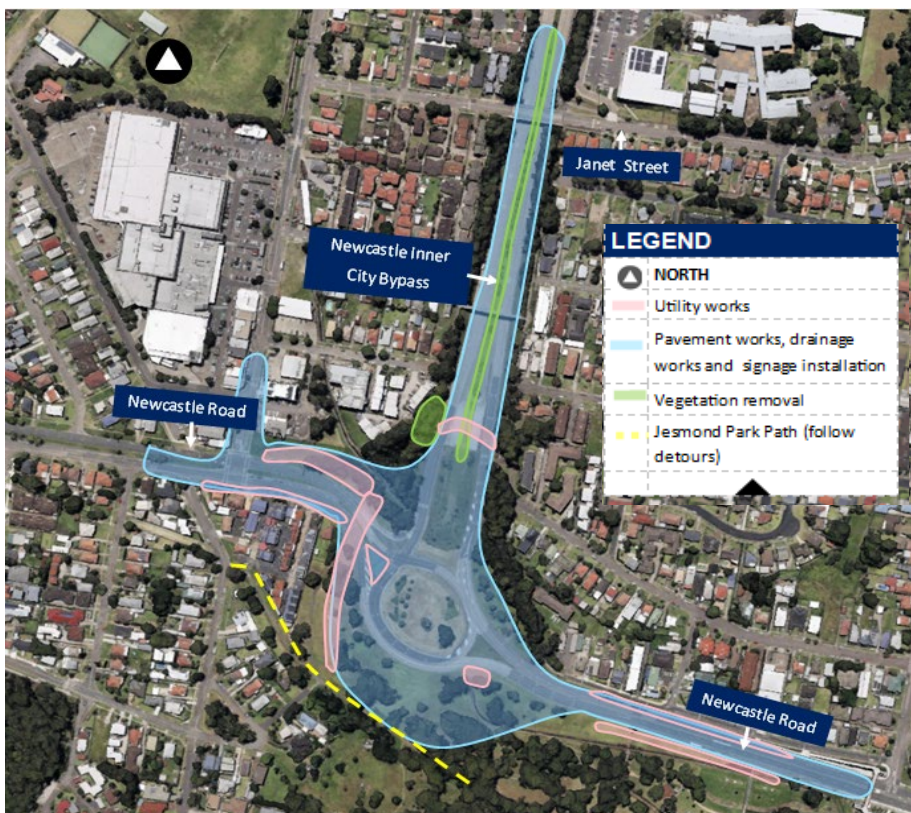
Noise levels will be moderate. Directly affected residents will be contacted and advised of the likely impact and what we are doing to minimise disruption during the work.



Details of planned work – up to 5 nights per week

Location	Activities	Equipment
Newcastle Inner City Bypass, Newcastle Road, Jesmond and within the Jesmond roundabout	<ul style="list-style-type: none"> Lane closures near project area Utility work including power, sewer, street lighting and traffic signals Installation of road pavement, kerbs, medians, and footpaths, retaining walls, road signage etc. Drainage works including demolishing existing and installing stormwater pits, stormwater pipes and box culverts, connection to services Installation of temporary work and support structures to facilitate and protect new installations or excavations Removing concrete kerbs, medians, islands, structural signage and pavements Pavement construction, temporary line marking and removal and asphaltting Service investigation using non-destructive digging Barrier placement including relocation and mechanical anchoring Trucks moving equipment between locations including deliveries of plant and materials Structural concrete pours and bridgeworks Delivery and installation of precast structures 	<ul style="list-style-type: none"> Traffic control systems modifications including set up and pack up Tracked and wheeled excavators Jackhammer, hammer drill, concrete saw Trucks, including rigids, watercarts, sweeper Mobile cranes including frannas Concrete pumps, concrete trucks, water pumps and drill rig Vacuum truck for non-destructive digging Backhoe, bobcat, skid-steer loader, roller Seal and aggregate trucks, rollers Compaction equipment and concrete vibrators Line marking truck, removal machine including a grinder and/or water blaster Asphalt paver, profiler, and support vehicles CCTV, survey and light vehicles, pole borer lifter and borer machine Lighting towers and pumps for the work area Cranes and oversized vehicles for deliveries Elevated work platforms Kerb machines and concrete deliveries

Location of work area



This is an artist impression only and is not to scale.

Contact us

If you would like to provide feedback, or have any questions or complaints about this work, please contact our project team on **1800 818 433** (24 hours), email RP2JCommunity@fultonhogan.com.au or mail to PO Box 186, Waratah, NSW 2298. For more information about the project visit nswroads.work/rp2j. Thank you for your patience during this important work.

Scan the QR code to visit our interactive portal and learn more about the project.



Translating and interpreting service



If you need help understanding this information, please contact the Translating and Interpreting Service on **131 450** and ask them to call us on **1800 818 433**.