



Newcastle Inner City Bypass – Rankin Park to Jesmond

Out of hours work at New Lambton Heights from Monday 23 October

Work is continuing on the 3.4 kilometre section of the Newcastle Inner City Bypass between Rankin Park and Jesmond. Transport for NSW has engaged Fulton Hogan to finalise the design and construct this section of the bypass.

Work in your area

Night work will be carried out from **Monday 23 October 2023** until **Friday 29 March 2024** (Sunday to Thursday nights), between **6pm** and **7am**, weather permitting. Day work will continue to be carried out between **7am** and **6pm** from **Monday** to **Friday**, and **Saturday** between **8am** and **5pm**. No work will be carried out on public holidays.

We will continue with earthworks which includes loading, hauling and placement of soils. Hauling across McCaffrey Drive will be completed at night to minimise heavy vehicle traffic during peak hour and reduce overall truck movements.

Other work includes tree removal, drainage installation, relocating of underground and overhead utilities, and removing, realigning and reconstructing pavements, islands and kerbs along McCaffrey Drive and Lookout Road. Asphalt paving along McCaffrey Drive will occur on one or two nights to maintain the roadway.

We will offset the removal of trees in line with the NSW Biodiversity Offset Strategy. An arborist and an environmental supervisor will be on site to monitor the vegetation removal and all activities will occur within a defined area.

Details of planned work

Location	Activities	Occurrence
Lookout Road and McCaffrey Drive, New Lambton Heights	<ul style="list-style-type: none"> Removal of existing islands, kerbs, median strips, pavements and retaining wall using concrete saw and other hand tools, excavators, excavator with hammer and road trucks Lifting concrete elements using franna/excavator Moving equipment, trucks, and materials between locations Loading, hauling, and placing soils Non-destructive digging using vacuum truck Traffic control set up and pack up Lighting towers and pumps for the work area Asphalting using graders, rollers, compact track loaders and trucks Installation of signage and road fixtures Concrete pours using concrete trucks and concrete pourers 	Up to 5 nights per week

Traffic changes

There will be traffic control on site, temporary lane closures and machinery operating in or next to the road lanes during night work. These will move locations, please take care, keep to the sign posted speed limits and follow the direction of traffic controllers.

For the latest traffic updates, you can call 132 701, visit livetraffic.com or check the Live Traffic App.

Why is work carried out at night?

We work outside standard construction hours to:

- improve safety by minimising the interactions between road users, pedestrians, and workers
- minimise delays and journey times for motorists and businesses.

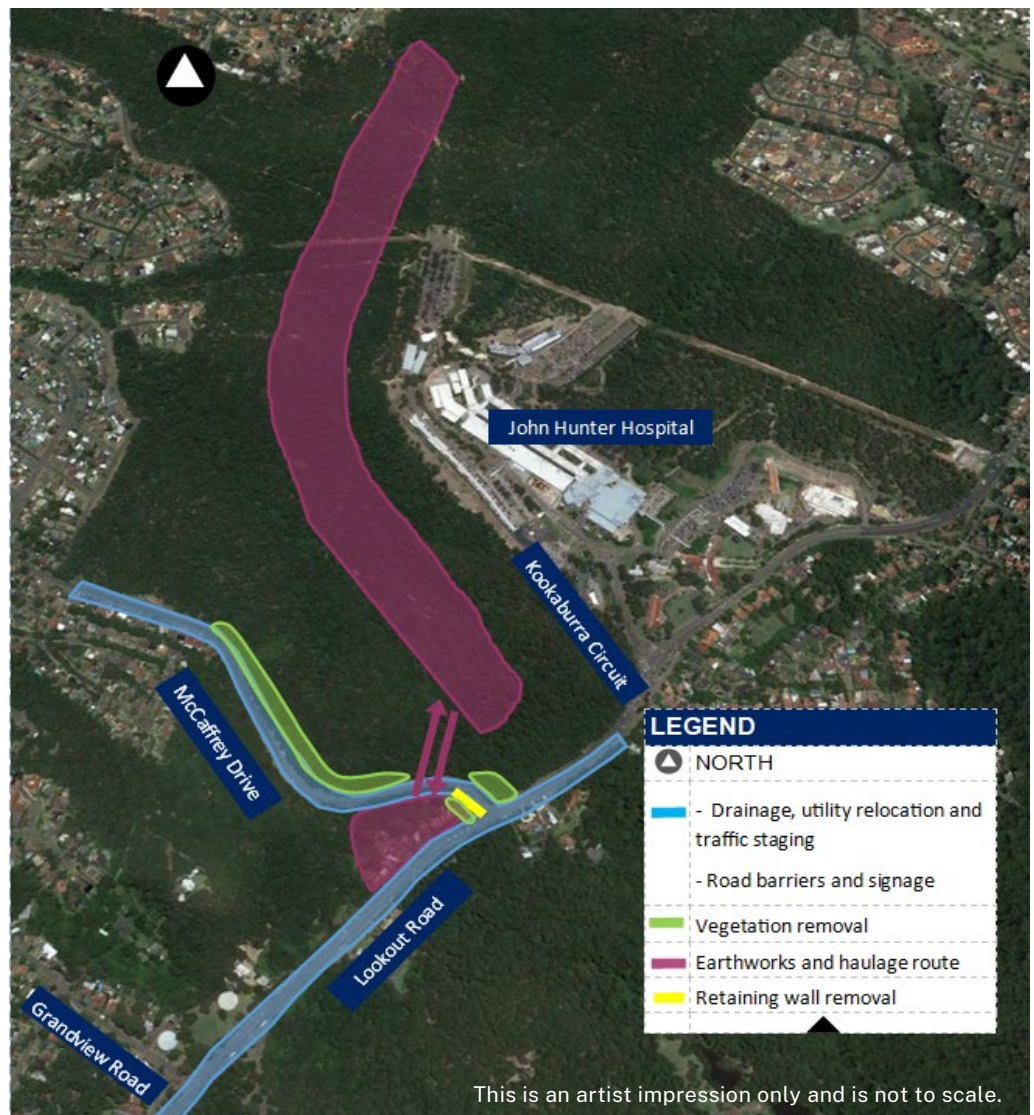
How will the work affect you?

There will be chainsaws and other plant and equipment working in different areas throughout the night work. The machinery and equipment generate light, noise, and vibration.

We will make every effort to minimise these impacts by:

- turning off machinery and vehicles when not in use
- using non-tonal reversing alarms
- positioning of machines and directing temporary lighting down and away from homes
- planning activities close to residents within standard construction hours and scheduling noisy activities earlier in the night, where possible
- monitoring noise to manage any potential impacts and adjusting our work, where possible.

Noise levels will be moderate. Directly affected residents will be contacted and advised of the likely impact and what we are doing to minimise disruption during the work.



More information

If you would like to provide feedback, or have any questions or complaints about this work, please contact our project team on **1800 818 433** (24 hours), email RP2JCommunity@fultonhogan.com.au or mail to PO Box 186, Waratah, NSW 2298. For more information about the project visit nswroads.work/rp2j. Thank you for your patience during this important work.

Scan the QR code to visit our interactive portal and learn more about the project.

Translating and interpreting service



If you need help understanding this information, please contact the Translating and Interpreting Service on **131 450** and ask them to call us on **1800 818 433**.

