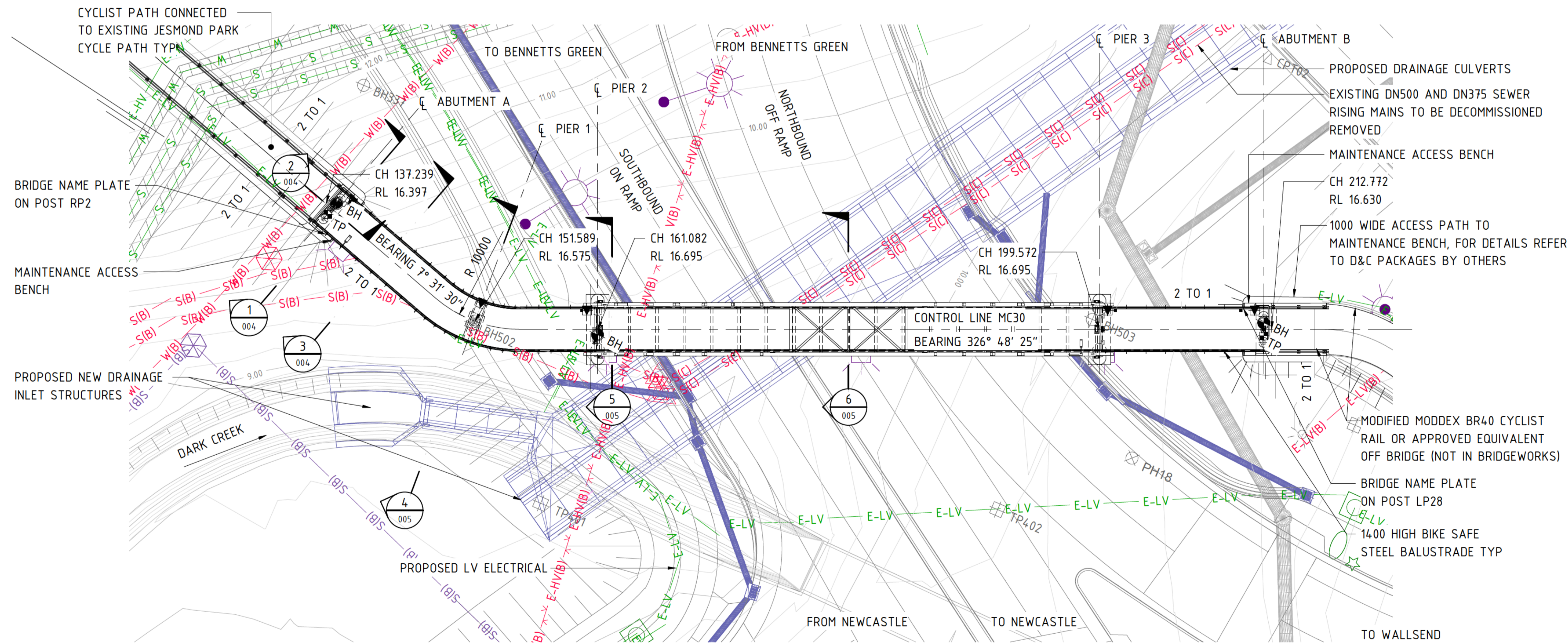


ELEVATION



PLAN

TABLE 1 - HORIZONTAL ALIGNMENT DATA

POINT	LOCATION	EASTING	NORTHING	BEARING IN	BEARING OUT
HCEN1	CENTRE OF CIRCLE	377765.016	6358248.420	-	-
HTP1	CHAINAGE 148.036	377774.929	6358247.110	7°31'30"	-
HTP2	CHAINAGE 155.142	377773.384	6358253.894	-	326°48'25"

GENERAL NOTES

SCALE 0 4 8 12m OR AS SHOWN

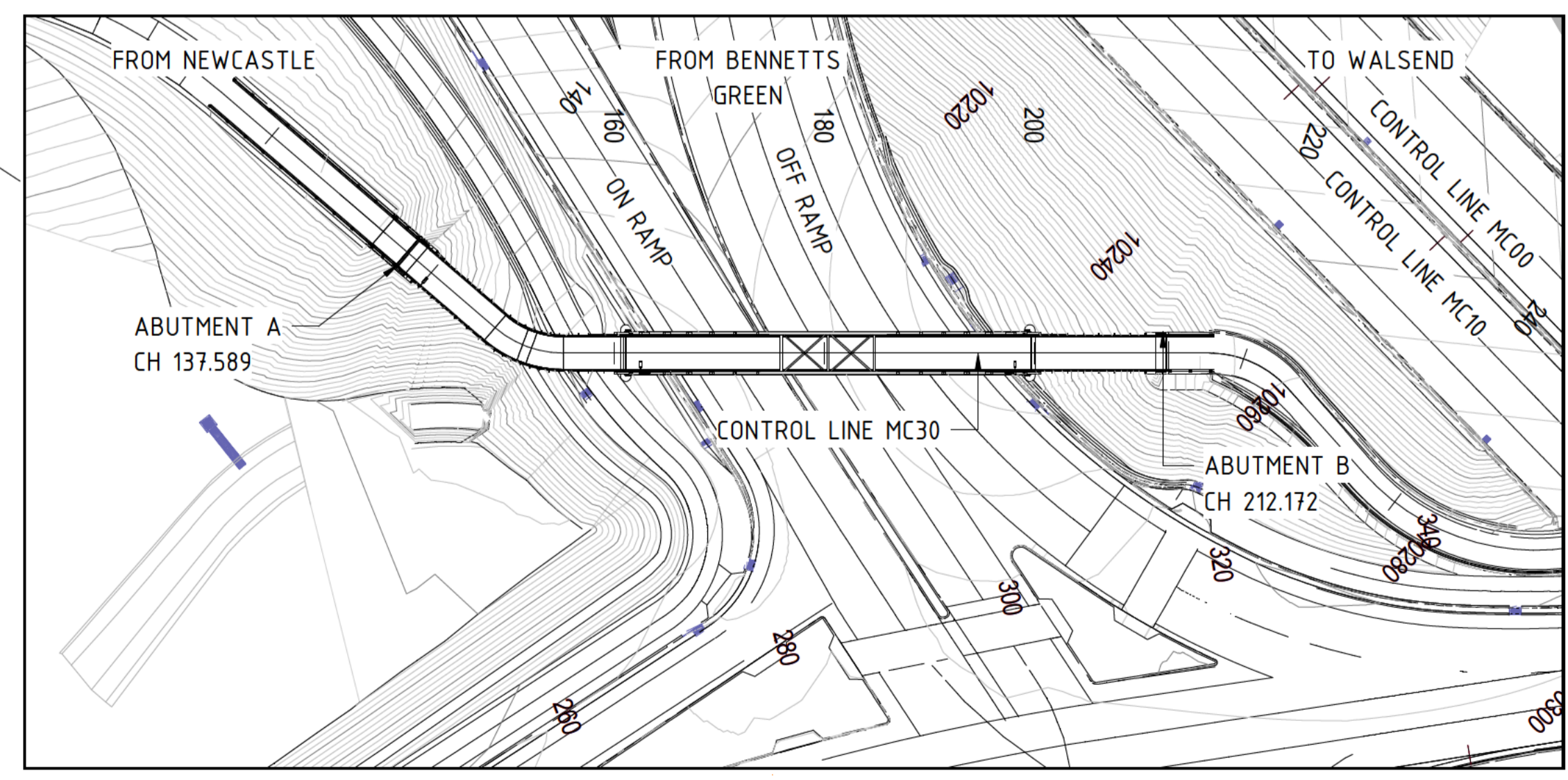
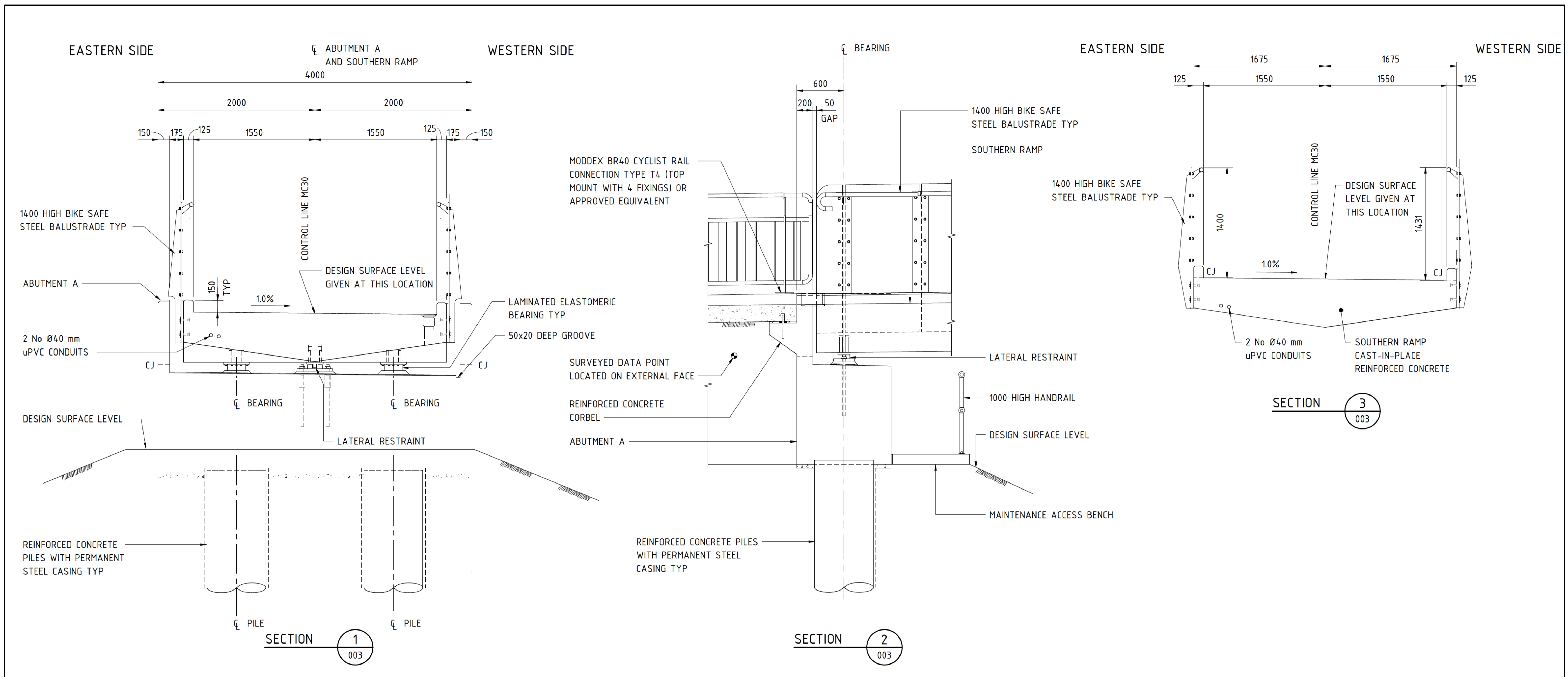
DIMENSIONS ARE IN MILLIMETRES.
 CHAINAGES AND REDUCED LEVELS ARE IN METRES.
 REDUCED LEVELS ARE RELATED TO AUSTRALIAN HEIGHT DATUM.
 CO-ORDINATES ARE TO MAPPING GRID AUSTRALIA (MGA) (GDA94).
 THE LOCATION OF ALL EXISTING SERVICES ARE TO BE CONFIRMED ON SITE PRIOR TO CONSTRUCTION.
 REFER TO UTILITIES D&C PACKAGES BY OTHERS FOR SERVICE RELOCATIONS AND UTILITIES LEGEND.
 FOR THE EXTENT OF FOUNDATION TREATMENT AND SOFT SOIL REMOVAL, REFER TO GEOTECHNICAL D&C PACKAGES BY OTHERS.
 R DENOTES RESTRAINED BEARING
 EJ DENOTES EXPANSION JOINT

LEGEND

- ⊕ BH DENOTES PROPOSED BOREHOLE TO BE COMPLETED BY CONTRACTOR
- ⊕ BHxxx DENOTES EXISTING BOREHOLE
- ⊕ PHxxx DENOTES EXISTING PAVEMENT HOLE
- ⊕ TPxxx DENOTES EXISTING TEST PIT
- △ DENOTES EXISTING CPT
- ⊕ DENOTES DRAINAGE OUTLET
- PROPOSED STORMWATER DRAINAGE, FOR DETAILS REFER TO D&C PACKAGES BY OTHERS

A	27.02.23	ISSUED FOR CONSTRUCTION			
ISSUE	DATE	AMENDMENT DESCRIPTION	PREP	CHK	AUTH
HIGHWAY No 23			CITY OF NEWCASTLE		
SHARED PATH BRIDGE OVER HIGHWAY No 23					
SOUTHERN RAMPS AT JESMOND					
GENERAL ARRANGEMENT - SHEET A					
aurecon www.aurecongroup.com			NSW GOVERNMENT Transport for NSW		
DESIGN	PREPARED	CHECKED	DRAWING SET No DS2020/000560		
DRAWING			BRIDGE No B12284		
APPROVED/DESIGN QA RECORDS			ISSUE STATUS FOR CONSTRUCTION		
DIRECTOR		ISSUE	A	No SHEETS 068	SHEET No 003

AURECON PROJECT No: 504057 © COPYRIGHT TRANSPORT FOR NSW 2020



GENERAL NOTES

SCALE: 0 500 1000 1500mm OR AS SHOWN

FOR OTHER GENERAL NOTES RELATING TO THIS SHEET, SEE SHEET No 003

ISSUE	DATE	AMENDMENT DESCRIPTION	PREP	CHK	AUTH
A	27.02.23	ISSUED FOR CONSTRUCTION	■	■	■
HIGHWAY No 23 CITY OF NEWCASTLE					
SHARED PATH BRIDGE OVER HIGHWAY No 23					
SOUTHERN RAMPS AT JESMOND					
GENERAL ARRANGEMENT - SHEET B					
aurecon www.aurecongroup.com			NSW GOVERNMENT Transport for NSW		
DESIGN	PREPARED	CHECKED	DRAWING SET No DS2020/000560		
DRAWING	■	■	BRIDGE No B12284		
APPROVED/DESIGN QA RECORDS	DIRECTOR		ISSUE STATUS FOR CONSTRUCTION		
			ISSUE A No SHEETS 068 SHEET No 004		

AURECON PROJECT No: 504057 © COPYRIGHT TRANSPORT FOR NSW 2020

EASTERN SIDE

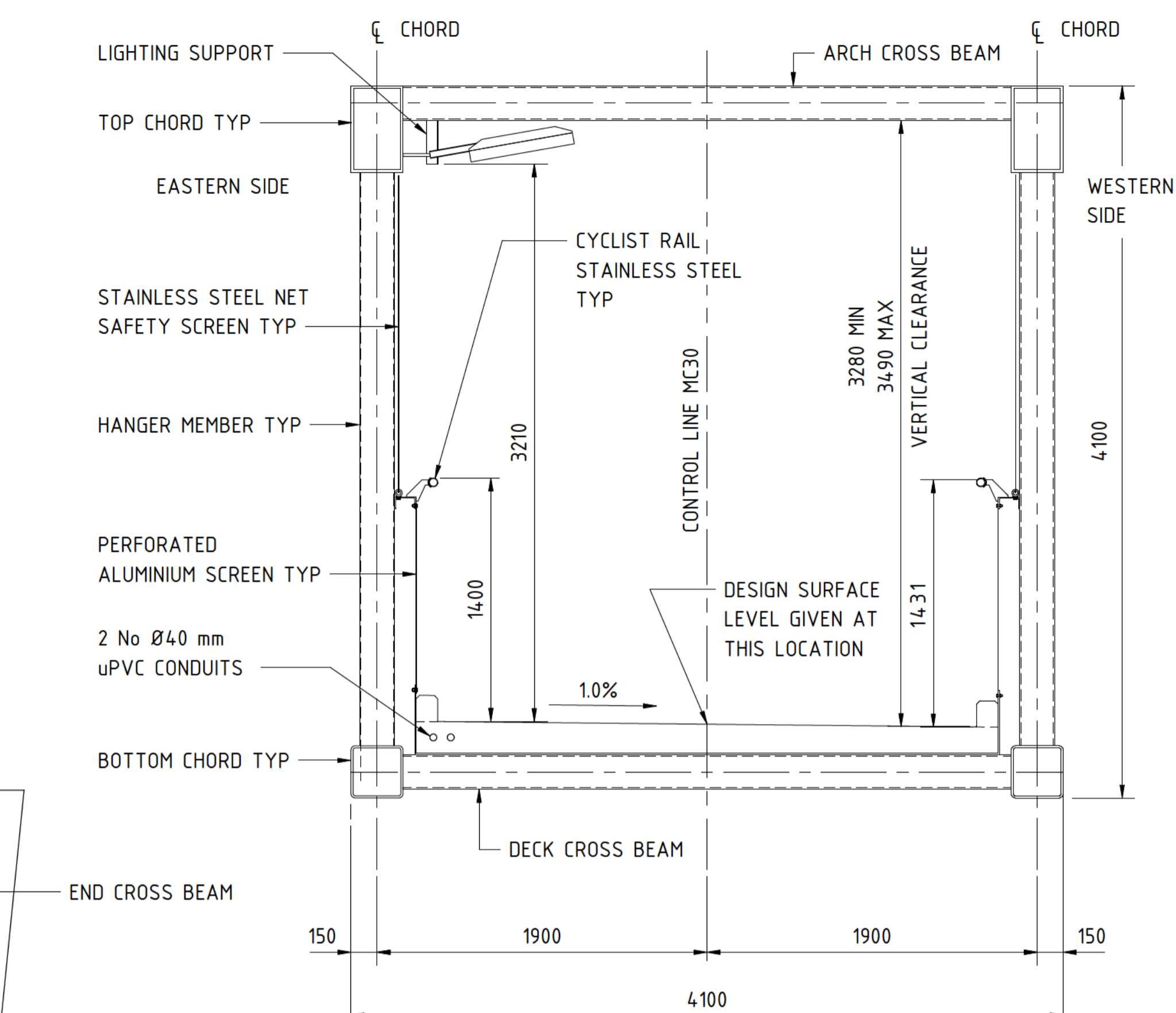
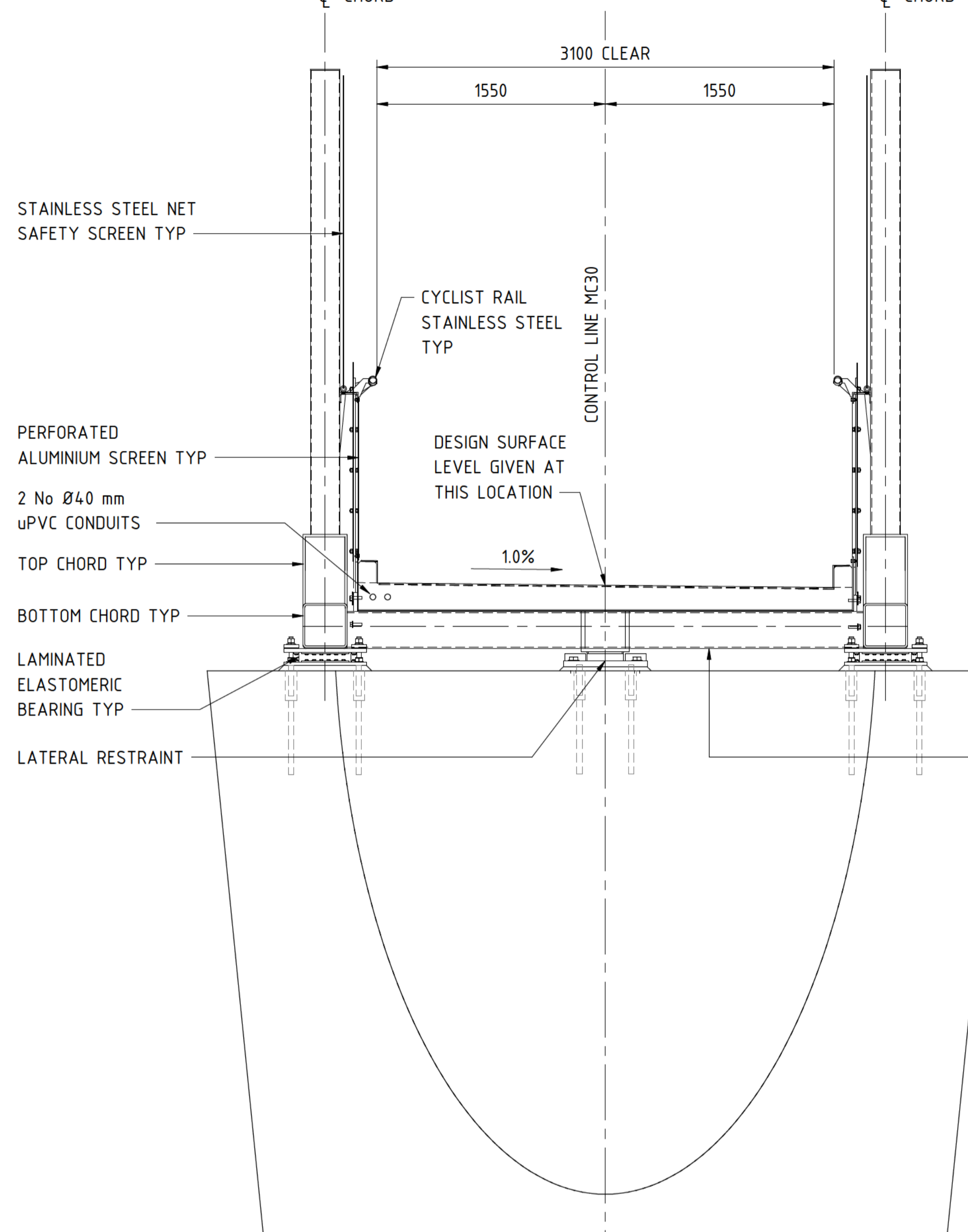
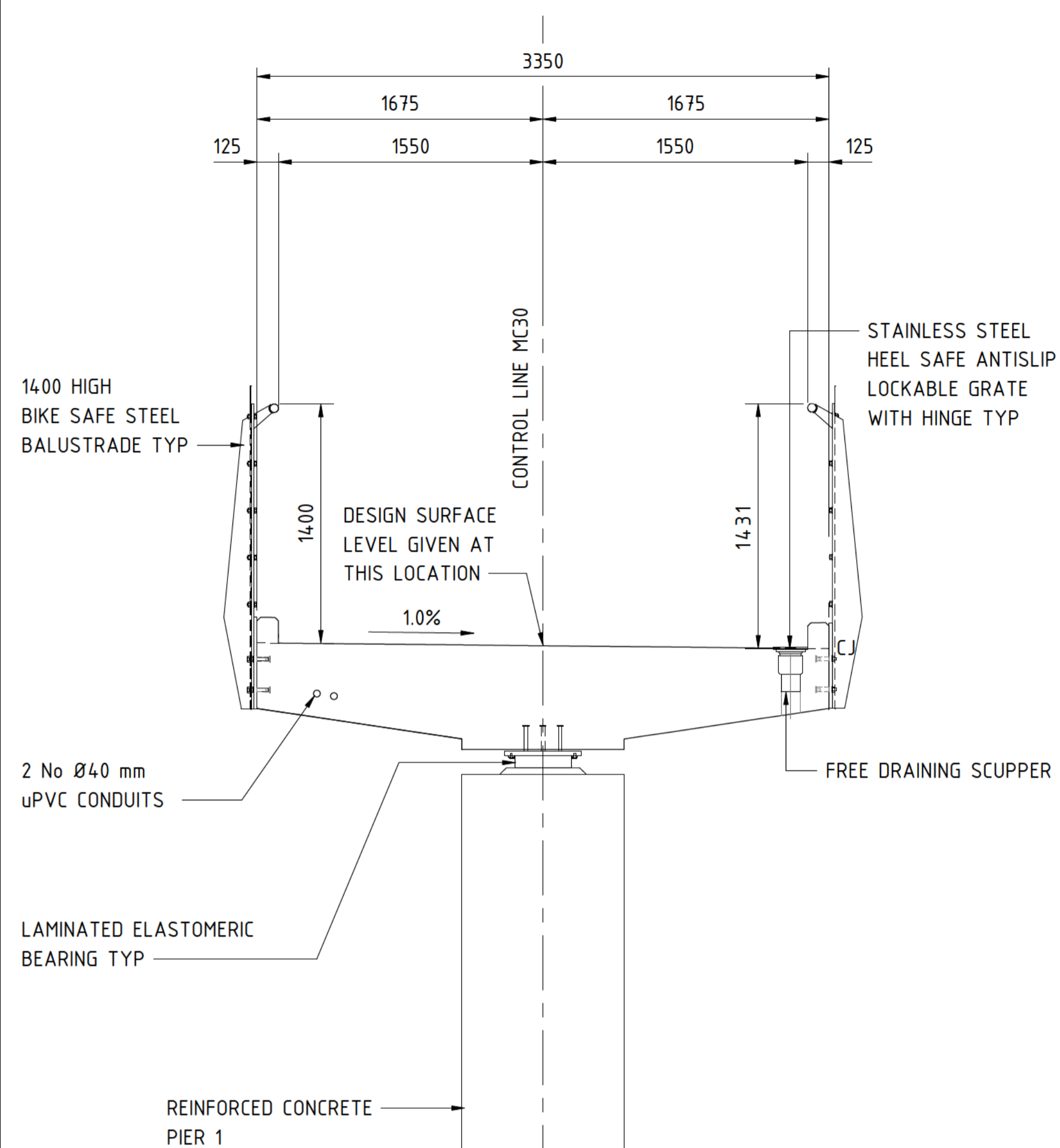
WESTERN SIDE

EASTERN SIDE

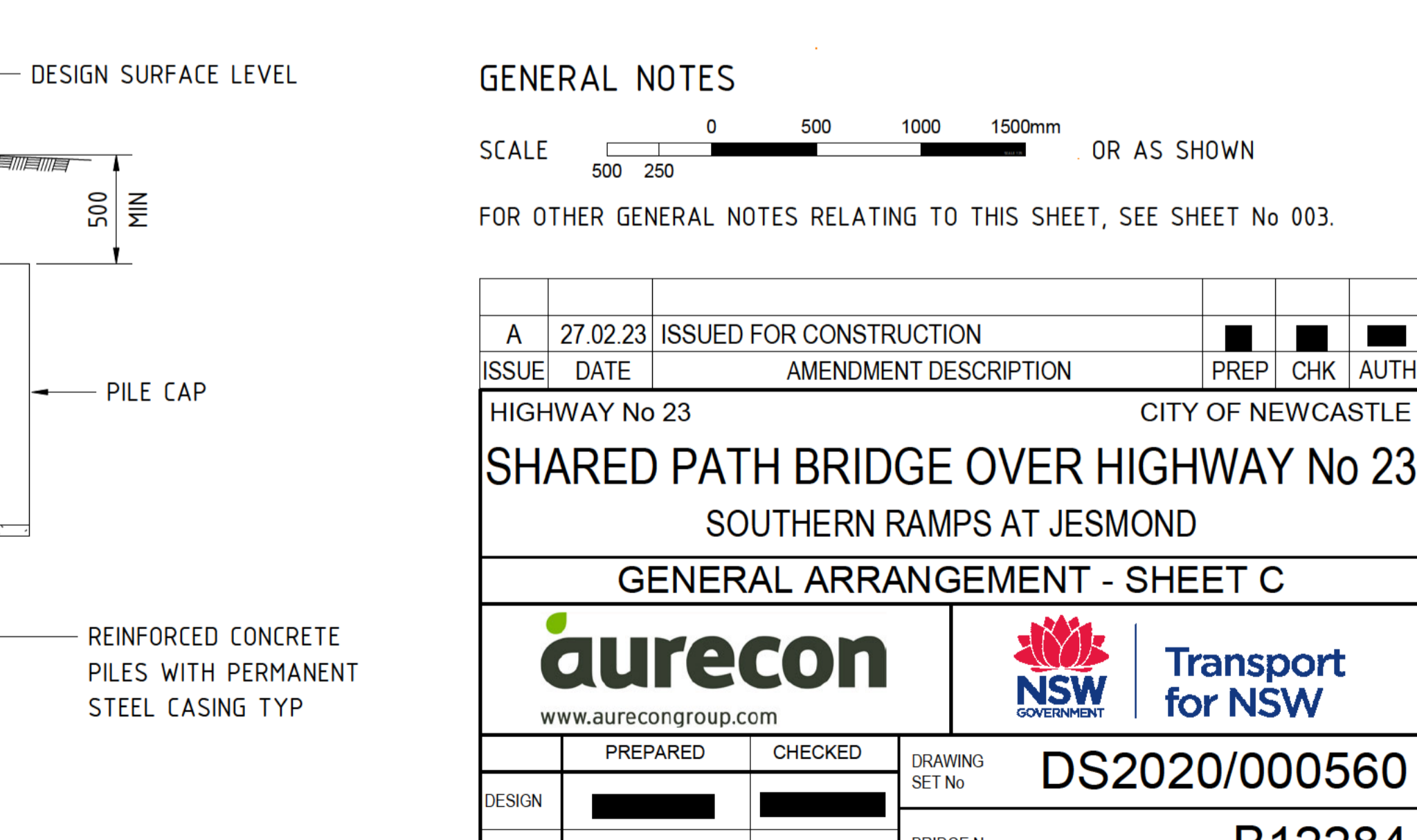
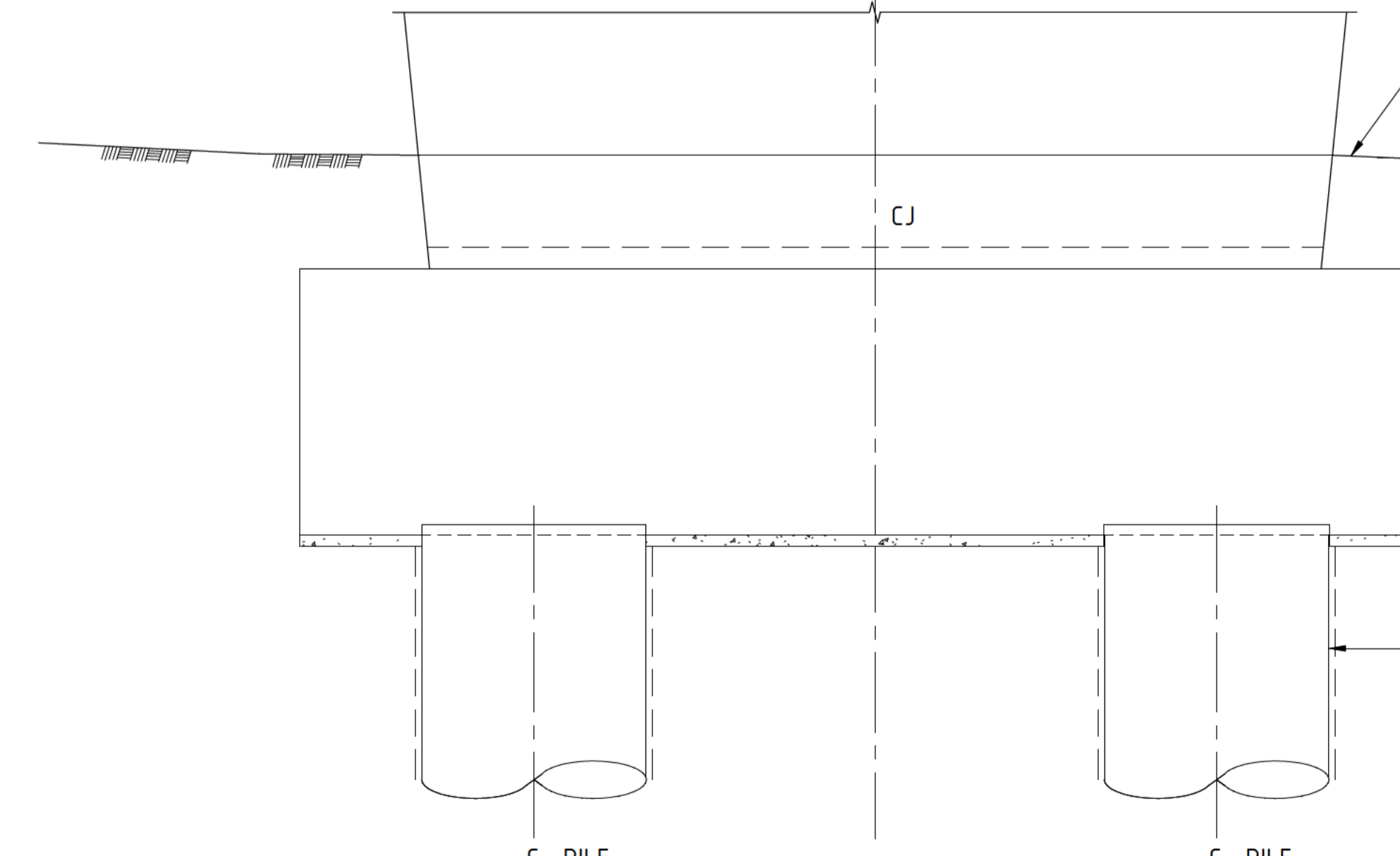
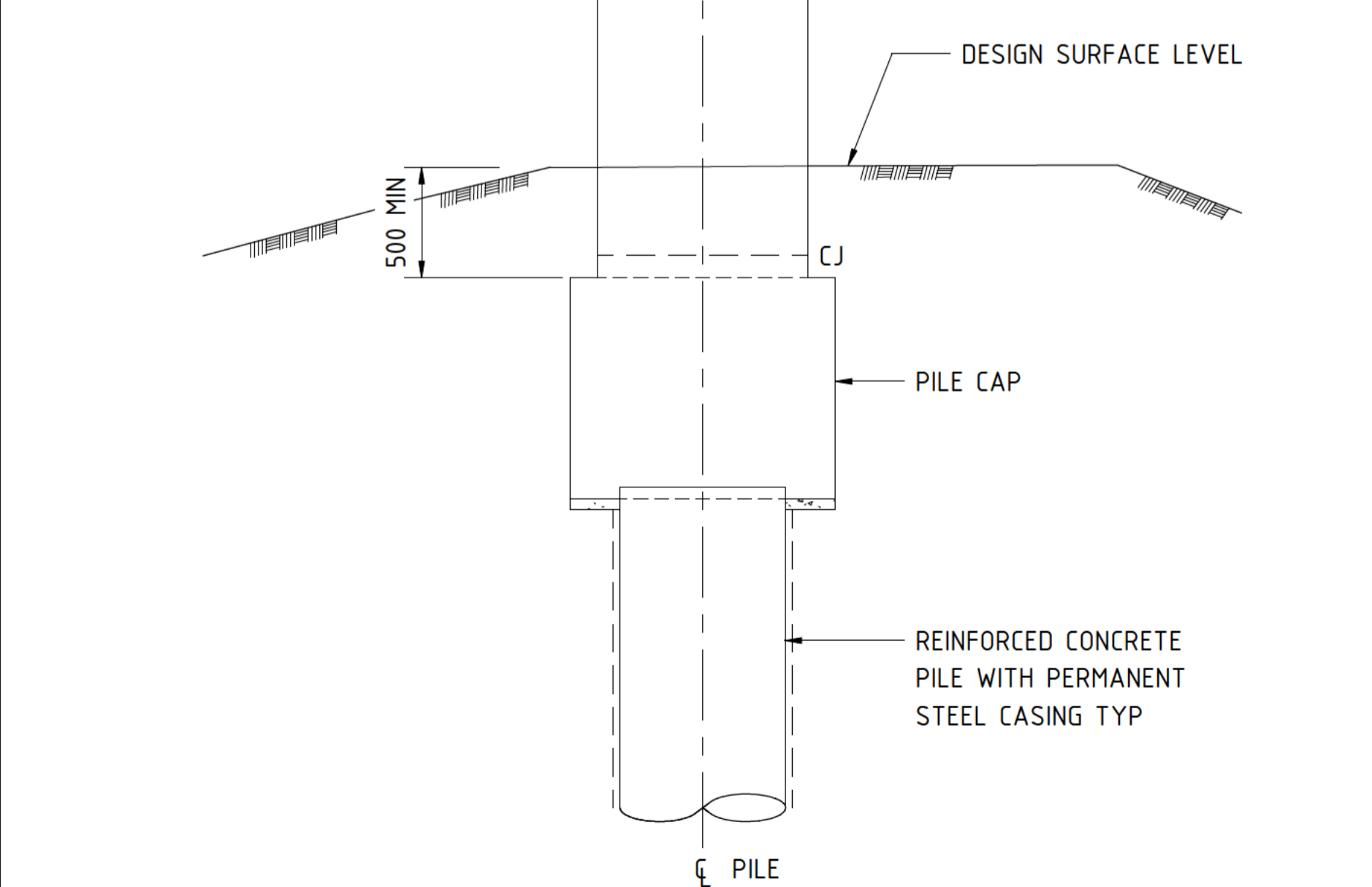
WESTERN SIDE

EASTERN SIDE

WESTERN SIDE



SECTION 6
003



SECTION 4
003

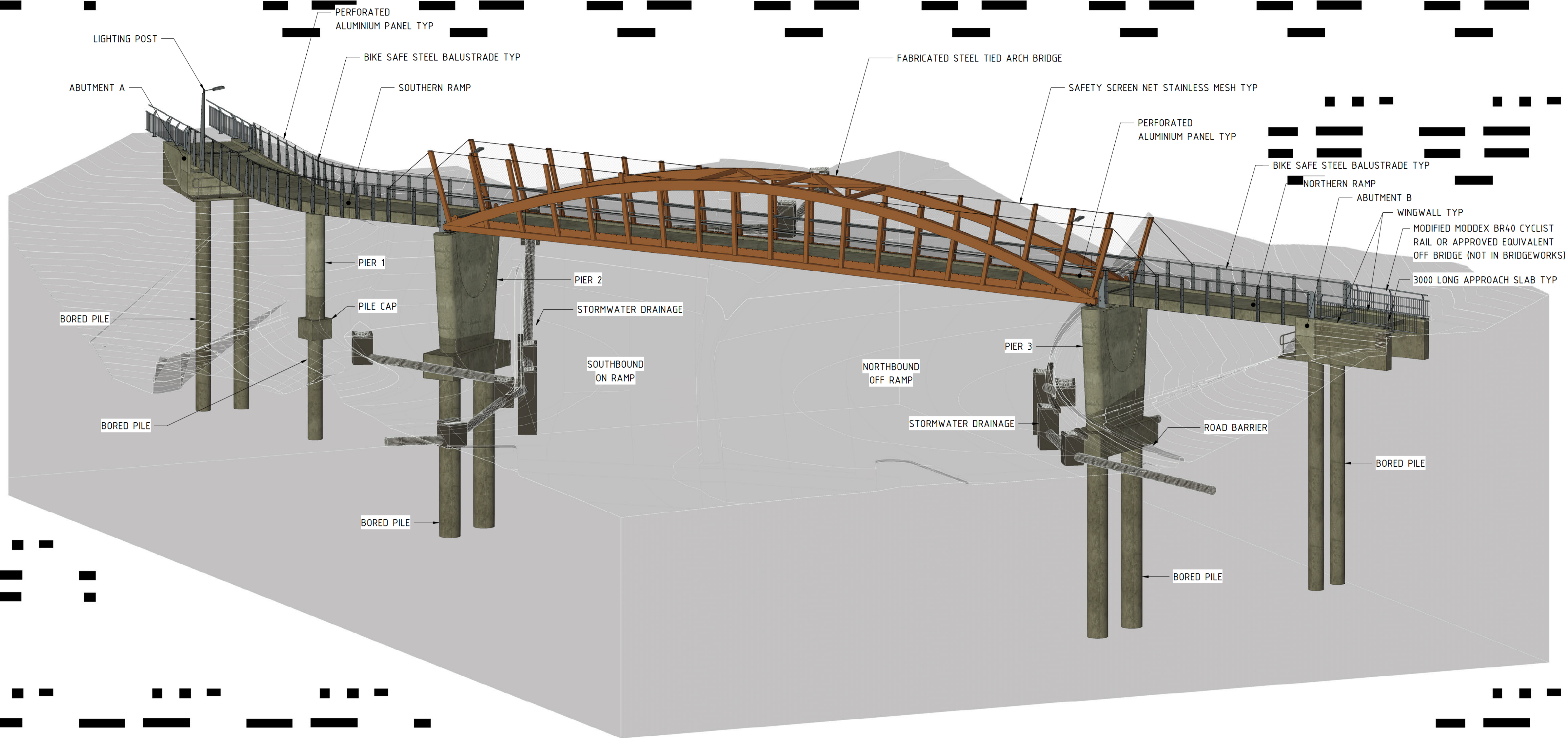
SECTION 5
003

GENERAL NOTES

SCALE 0 500 1000 1500mm OR AS SHOWN

FOR OTHER GENERAL NOTES RELATING TO THIS SHEET, SEE SHEET No 003.

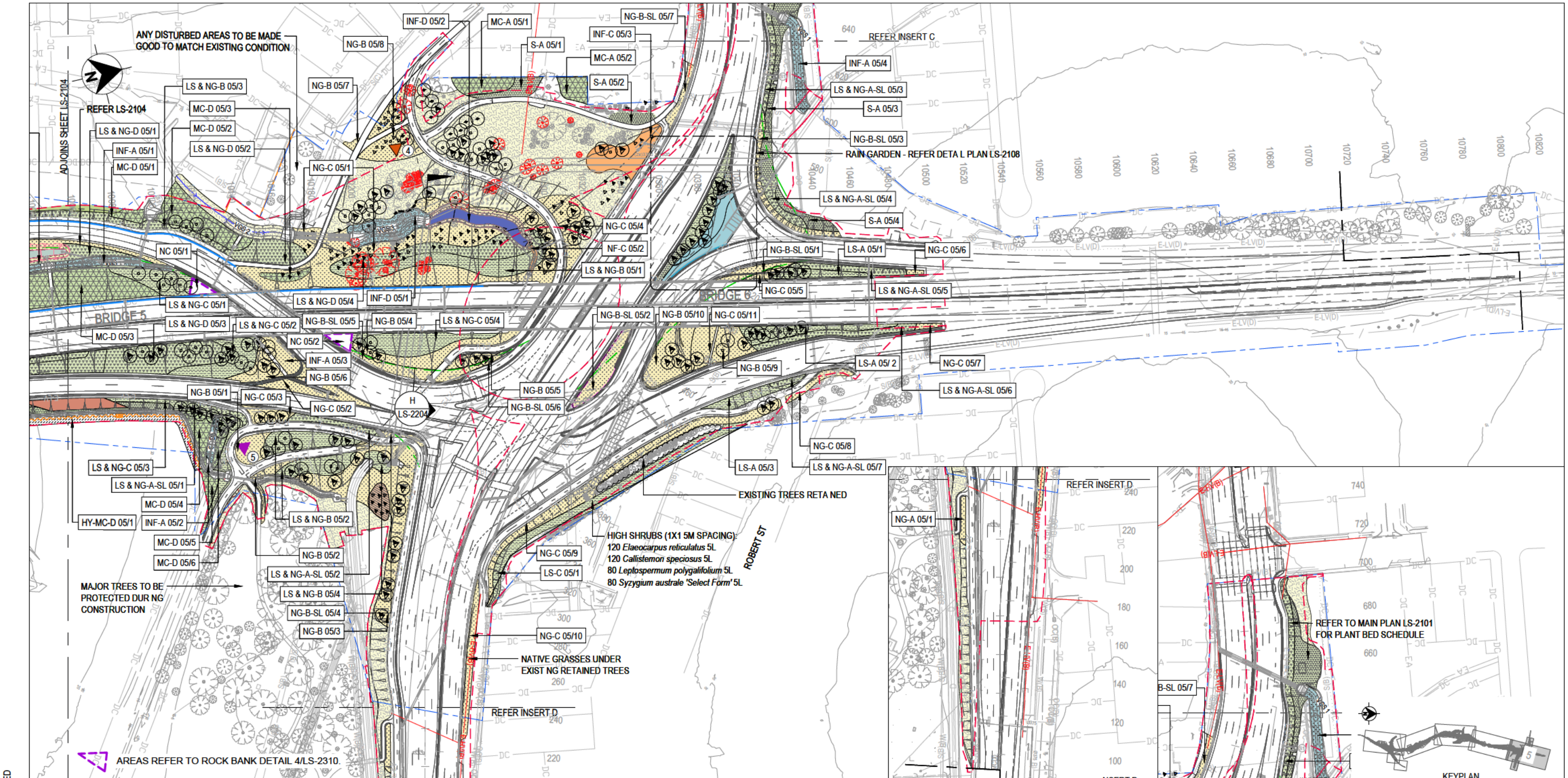
A	27.02.23	ISSUED FOR CONSTRUCTION			
ISSUE	DATE	AMENDMENT DESCRIPTION	PREP	CHK	AUTH
HIGHWAY No 23 CITY OF NEWCASTLE					
SHARED PATH BRIDGE OVER HIGHWAY No 23					
SOUTHERN RAMPS AT JESMOND					
GENERAL ARRANGEMENT - SHEET C					
aurecon www.aurecongroup.com			NSW GOVERNMENT Transport for NSW		
DESIGN	PREPARED	CHECKED	DRAWING SET No DS2020/000560		
DRAWING			BRIDGE No B12284		
APPROVED/DESIGN QA RECORDS	DIRECTOR		ISSUE STATUS FOR CONSTRUCTION		
			ISSUE A	No SHEETS 068	SHEET No 005



3D-VIEW
PROPOSED CULVERT UNDER NEWCASTLE ROAD NOT SHOWN

ISSUE	27.02.23	ISSUED FOR CONSTRUCTION	PREP	CHK	AUTH
DESIGN					
DRAWING					
APPROVED/DESIGN QA RECORDS					
HIGHWAY		CITY		NEWCASTLE	
SHARED PATH BRIDGE OVER HIGHWAY No 23					
SOUTHERN RAMPS AT JESMOND					
GENERAL ARRANGEMENT - SHEET D					
www.aurecongroup.com		NSW GOVERNMENT		Transport for NSW	
PREPARED	CHECKED	DRAWING SET No	DS2020/000560		
		BRIDGE No	R12284		
DIRECTOR		ISSUE STATUS	FOR CONSTRUCTION		
		ISSUE	A	No SHEETS	068
				SHEET No	006
AURECON PROJECT No: 504057					
© COPYRIGHT TRANSPORT FOR NSW 2020					

THIS DRAWING IS CONFIDENTIAL AND SHALL ONLY BE USED FOR THE PURPOSE OF THE NOMINATED PROJECT



THIS DRAWING MAY BE PREPARED IN COLOUR AND MAY BE INCOMPLETE IF COPIED

LEGEND

SURFACES & PLANTING

- TURF - REFER DETAIL 05/LS-2301 - 75mm DEPTH TOPSOIL
- PARKLAND GRASS - HYDROSEEDING PLUS STRAW MULCHING REFER TNSW SPECIFICATION R178 - 50mm DEPTH TOPSOIL
- MPB TYPE 1 - NATIVE GRASSES & GROUNDCOVERS REFER DETAILS 01, 04/LS-2301 - 50mm TUBES PLANTED @ 6M² - 100mm DEPTH TOPSOIL - 75mm DEPTH MULCH
- MPB TYPE 2 - LOW SHRUBS & NATIVE GRASSES REFER DETAILS 02, 04/LS-2301 & 1/LS-2302 - TUBESTOCK PLANTED 75% @ 1M² & 25% 50mm TUBES @ 6M² - 150mm DEPTH TOPSOIL - 75mm DEPTH MULCH
- MPB TYPE 3a - HIGH SHRUBS REFER DETAILS 03, 04/LS-2301 & 01/LS-2302 - TUBESTOCK PLANTED HIGH SHRUBS @ 1M² & 0.7M² - 150mm DEPTH TOPSOIL - 75mm DEPTH MULCH
- MPB TYPE 3b - LOW SHRUBS REFER DETAILS 03, 04/LS-2301 & 01/LS-2302 - 140mm LOW SHRUBS @ 1M² - 140mm LOW SHRUBS @ 2M² OVER PREVIOUS PAVEMENT AREA - 150mm DEPTH TOPSOIL - 75mm DEPTH MULCH
- MPB TYPE 4 - MIXED CANOPY REFER DETAILS 03, 04/LS-2301 & 01/LS-2302 - TUBESTOCK PLANTED 80% @ 0.5M²(TREES) & 20% @ 1M²(SHRUBS) - 150mm DEPTH TOPSOIL - 75mm DEPTH MULCH
- MPB TYPE 5 - TREE PODS REFER DETAIL 02/LS-2302
- PLANTING POCKETS IN ROCK FILL REFER DETAIL 03/LS-2310
- HY-S HYDROSEEDING & COARSE MULCH LAYER - SHRUB DOMINANT REFER DETAILS 01, 02/LS-2309 - 100mm DEPTH SOIL MIX
- HY-MC HYDROSEEDING & COARSE MULCH LAYER MIXED CANOPY REFER DETAILS 01, 02/LS-2309 - 100mm DEPTH SOIL MIX
- HY-MC HYDROSEEDING & COARSE MULCH LAYER MIXED CANOPY OVER MACMAT R OR APPROVED EQUIVALENT REFER DETAILS 01/LS-2309 - 100mm DEPTH SOIL MIX
- ORGANIC FIBRE MATTING (IN LIEU OF MULCH) REFER DETAIL 03/LS-2302, DETAIL 02/LS-2309
- BATTER LANDSCAPE STABILISATION WITH PINNED LOGS REFER DETAILS 01, 02/LS-2310
- FAUNA HABITAT - SHRUBS & NATIVE GRASSES REFER DETAILS LS-2106 - 100mm DEPTH LEAF LITTER, LOGS - TOPSOIL TO PLANT HOLES ONLY
- FAUNA HABITAT - SHRUBS (REFER DETAILS LS-2106) - 100mm DEPTH LEAF LITTER, LOGS - TOPSOIL TO PLANT HOLES ONLY
- BUSH REGENERATION REFER TNSW RP2J PROJECT SPECIFICATION R179
- WATER SENSITIVE DESIGN
- BIO-FILTRATION SYSTEM REFER DETAIL 06/LS-2308
- INF INFILTRATION AREA REFER DETAIL 03/LS-2303
- TURFED INFILTRATION AREA REFER DETAIL 04/LS-2304
- RAIN GARDEN REFER DETAILS 01-03/LS-2108
- ROCK MULCH SWALE REFER DETAILS 01, 02/LS-2304
- ROCK MULCH TERRACING REFER DETAIL 03, LS-2304 & DETAILS 01-04, LS-2305
- VEGETATED SWALE TYPE 1 (HYDRO- SEEDED + STRAW LAYER WITH INTER-PLANTING) REFER DETAIL 01/LS-2303
- VEGETATED SWALE TYPE 2 (TURF) REFER DETAIL 02/LS-2303
- VEGETATED SWALE TYPE 3 (INTER-PLANTING) REFER DETAIL 05/LS-2303
- INCIDENTAL WORKS
- PLANTING OVER PREVIOUS PAVEMENT OR WITHIN MEDIANS. REFER DETAIL 06/LS-2301
- COMPACTED SOIL STRIP REFER TNSW SPECIFICATION R179
- MULCH ONLY - 100mm THICK
- BOULDER RETAINING EDGE REFER DETAILS 01, 02/LS-2307
- OTHER
- SIGHTLINES
- INTERPRETATION SIGNAGE REFER LS-2501 - LS-2506
- SPOT TREE PLANTING - REFER DETAILS 1, 2/LS-2308
- Angophora costata (45L)
- Corymbia maculata (45L, 5L)
- Eucalyptus fibrosa (45L)
- Eucalyptus paniculata (45L, 5L)
- Eucalyptus piperita (45L)
- Eucalyptus punctata (45L, 5L)
- Syncarpia glomulifera (45L)

NOTE: REFER TO PLANTING BED SCHEDULES LS-2401 - 2405

DRAWING FILE LOCATION / NAME Z:\KIAH INFRANET PROJECTS\21-09 RP2J D & C Bid\FHIF TECHNICAL DATA_FILES\F2 CAD Drawings\F2K KIS Drawings\LS-2100		DESIGN LOT CODE LS	DESIGN MODEL FILE(S) USED FOR DOCUMENTATION OF THIS DRAWING LS-2100	PLOT DATE / TIME 12 DEC 2022 / 3:44 PM	PLOT BY
QR CODE	EXTERNAL REFERENCE FILES	REV	DATE	AMENDMENT / REVISION DESCRIPTION	WVR No.
		A	14/12/2022	ISSUED FOR CONSTRUCTION	
		DRAWINGS / DESIGN PREPARED BY			
CO-ORDINATE SYSTEM MGA ZONE 56 (GDA94)		HEIGHT DATUM AHD			
DRAWN		DESIGN		DESIGN CHECK	
DRG CHECK		DESIGN MNGR		PROJECT MNGR	
				REGIONAL PROJECT DELIVERY OFFICE NORTHERN PROJECT OFFICE - HUNTER	
CITY OF NEWCASTLE HW23 NEWCASTLE INNER CITY BYPASS RANKIN PARK TO JESMOND		LANDSCAPING SURFACES AND PLANTING PLAN		SHEET 05 OF 05	
RMS REGISTRATION No. DS2019/000225		ISSUE STATUS ISSUED FOR CONSTRUCTION		EDMS No. SF2012/052175	
SHEET No. LS-2105		PART		ISSUE	
A		A		A	

ISSUED FOR CONSTRUCTION

A3