

# Changed traffic conditions on the Oxley Highway, Mount Seaview from 15 December

## Oxley Highway

December 2023



Transport for NSW acknowledges the Birpai people as the Traditional Custodians of the lands on which we work and pays respect to Elders past and present.

The NSW Government is funding essential reconstruction work on the Oxley Highway at Mount Seaview to reinstate full access through natural disaster affected areas.

### What work are we doing?

Transport for NSW is continuing major restoration work on the Oxley Highway at Mount Seaview to return the road to pre-2021/2022 flood condition. Work includes:

- Establishing a temporary work site
- Major earthworks and some vegetation removal
- Soil nailing to stabilise slip sites
- Shotcreting to provide embankment support
- Using heavy machinery to carry out work
- Installing improved drainage

From **3pm Friday, 15 December** the temporary road closures, which have been in place Tuesdays to Fridays, will be lifted. We thank the community for their co-operation and patience during this important work.

The Oxley Highway will return to single lane alternating flow traffic arrangements during the NSW summer school holidays with full road closures to resume **Tuesday, 30 January 2024**.

We expect the full road closures to be in place until about Easter 2024.

### Christmas shutdown – traffic changes

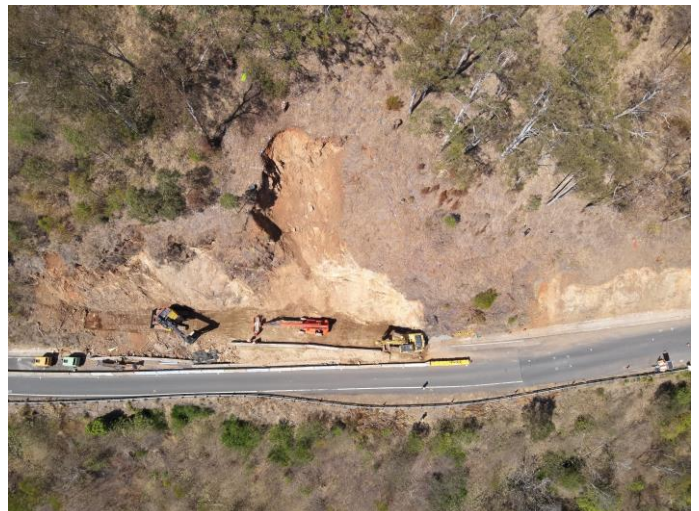
All non-essential work will stop from Saturday, 23 December 2023 with work restarting on Monday, 8 January 2024.

Traffic control will remain in place during this time with single lane alternating flows and reduced speed limits for the safety of road users.

Motorists should plan their journeys and allow extra travel time.

For the latest traffic updates, you can call 132 701, visit [livetraffic.com](http://livetraffic.com) or download the Live Traffic NSW App.

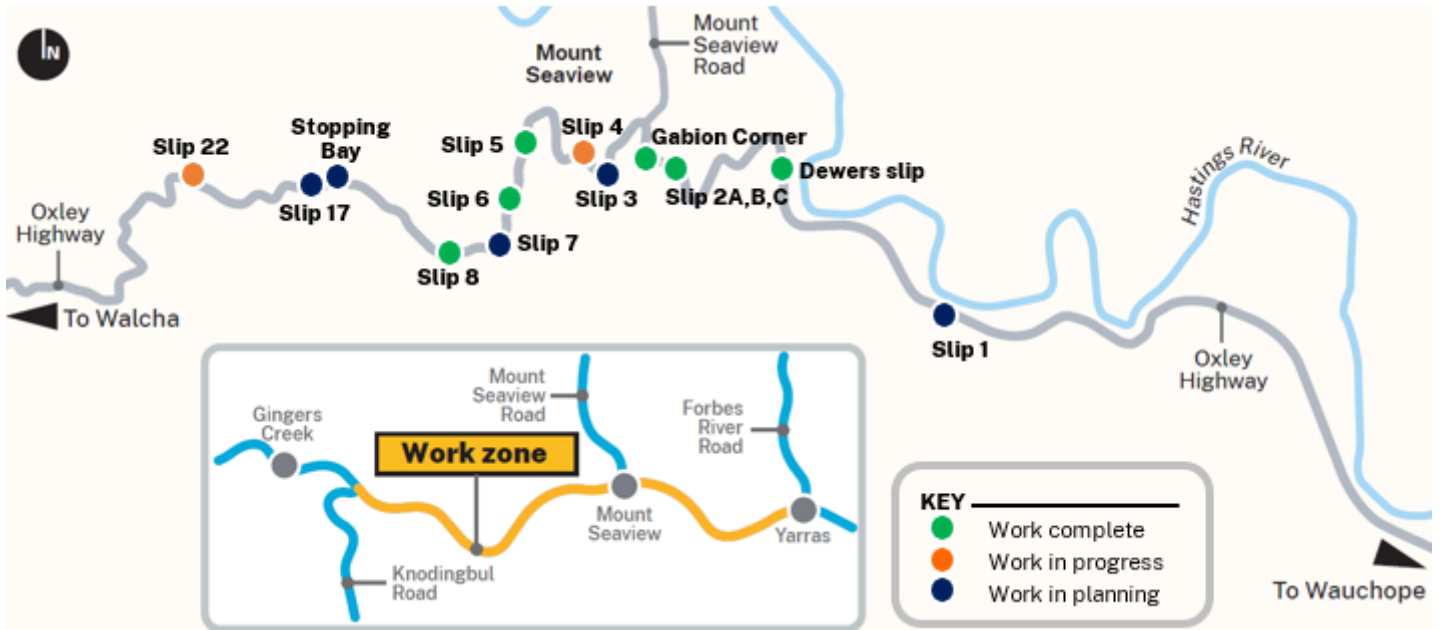
We will keep the community informed of future planned road closures.



Work progressing on Slip 22, October 2023



## Location of work area



## Contact us



Project Infoline **1800 653 092**



**region.north@transport.nsw.gov.au**



**nswroads.work/oxleyrecovery**



76 Victoria Street  
Grafton, NSW, 2460



**For the latest traffic updates:**

Call 132 701, visit [livetraffic.com](http://livetraffic.com) or download the app Live Traffic NSW



**Interpreter service**

For languages other than English call 131 450  
Arabic • Greek • Hindi • Mandarin • Vietnamese

لطلب خدمة الترجمة الشفهية للغات غير الإنجليزية اتصل  
بالرقم **131 450**

Για υπηρεσίες διερμηνείας σε άλλες γλώσσες εκτός από  
τα Αγγλικά καλέστε το **131 450**

अंग्रेज़ी के अतिरिक्त अन्य भाषाओं के लिए दुभाषिया सेवा  
**131 450** पर कॉल करें

获取英语以外的其他语言口译协助服务可以致电**131 450**

Để có dịch vụ thông ngôn cho các ngôn ngữ khác tiếng  
Anh, gọi số **131 450**

[www.transport.nsw.gov.au/privacy-statement#Your\\_Privacy](http://www.transport.nsw.gov.au/privacy-statement#Your_Privacy)