

# Pacific Highway duplication at Lisarow

## Project update

July 2023

[nswroad.work/lisarow](https://nswroad.work/lisarow)



Aerial view of the project area

The NSW Government has delivered the duplication of the Pacific Highway between Ourimbah Street and Parsons Road at Lisarow.

The \$178 million upgrade is now open to two lanes in each direction at 60 kilometres per hour, meaning improved traffic flow and safety for around 30,000 motorists travelling on this section of highway each day.



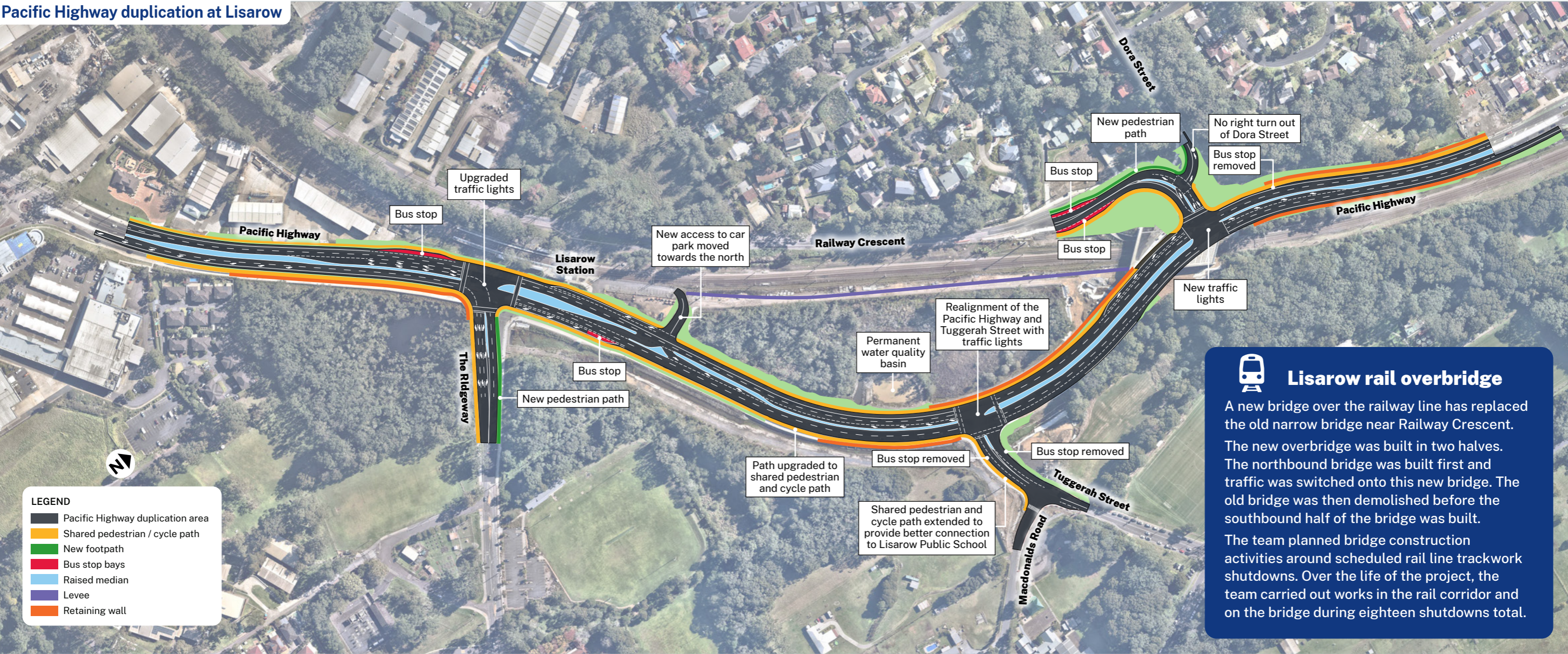
Improved traffic flow  
and travel times



Improved connections  
to the local road network



Improved pedestrian  
and cycle network



Construction of the new bridge

### Interesting facts about the bridge

- 3,277 cubic metres of concrete and 579 tonnes of steel reinforcement placed on site within bridge structure
- 59 underground piles to support the bridge averaging 18 metres deep and ranging from 900 millimetres to 1,050 millimetres in diameter
- 54 precast concrete girders averaging 35 metres long and weighing 75 tonnes, as well as 30 precast concrete barriers

### Improved safety

The project has improved safety for all road users, with upgrades to the intersections of Pacific Highway and Railway Crescent, new traffic lights at the Railway Crescent and Tuggerah Street intersections with the Pacific Highway and upgrades to the existing traffic lights at The Ridgeway.

### Pedestrian and cycle network

A new pedestrian shared path and cycle network has been constructed from Ourimbah Street to the Lisarow Shopping Centre. It provides a safe, shared pathway for pedestrians and cyclists, and connections to the three local schools and to Lisarow Station.

### Community

The project team engaged with the community throughout construction of the project, with over 90 notifications distributed as well as regular emails, phone calls and door knocks. School students from Lisarow Public School attended a site inspection during works near to the school. As part of the HunterWise females in Science, Technology, Engineering and Maths program (STEM), students from Gorokan High toured the project to learn more about what it takes to build a large infrastructure project.



## Preservation of the environment

During the project development phase, two threatened flora species and potential habitat for several threatened fauna species were identified within the project area. The project team created a safe space around these species to minimise construction impacts. Vegetation in the area was maintained through construction using clearing limits, exclusion flagging and regular environmental monitoring and inspections.



## Lisarow Cemetery

The longest and highest retaining wall on the project was in front of Lisarow Cemetery which is more than six metres high and 100 metres long and has sandstone feature facing panels. The original cemetery gates have been reinstated along with new sandstone block feature work.



## Workers on the project

Over 1900 people worked on the project, including engineers, surveyors, supervision staff, labourers, concreters, carpenters, surveyors, environmental engineers and support staff. There were generally 50 workers on site each day and over 120 different sub-contractors were employed on the project.



## Thank you to the community

Thanks to all impacted road users, local businesses and the community for your patience and support. With the upgrade now open to two lanes in each direction at 60km/h, you will now experience improved travel times and safer journeys on this stretch of road.



## Finishing work

You will continue to see construction staff on site while finishing work is completed. Final asphaltting work was postponed during the winter months, as cold weather can have a negative impact on asphalt quality. We expect this work to be completed during the night and will notify nearby residents prior to this activity occurring.

Other finishing work, including finalising the station car park, site compound removal, rehabilitation and general cleaning of the area will be carried out during standard construction hours between **7am and 6pm from Monday to Friday**, and between **8am and 1pm on Saturday**.



## Project achievements

- Worked with Sydney Trains to carry out the demolition and construction of a new rail bridge within the strict time constraints required by the railway network
- Nearly doubled the target for Aboriginal participation, through a combination of direct employment and engagement of Aboriginal businesses
- Completed a significant amount of foundation treatments across the project, including wet soil mixing near sensitive environmental areas and extensive ground treatment on the bridge embankments
- Overcame challenging COVID restrictions throughout 2021.



Project team members from Transport for NSW and Daracon joined by Entrance MP David Mehan to celebrate the project opening to two lanes in each direction

## Contact us

For more information on the project or to join our mailing list (email or post), please contact our project team:



1800 560 667 (business hours)



[lisarow.enquiries@daracon.com.au](mailto:lisarow.enquiries@daracon.com.au)



[nswroads.work/lisarow](https://nswroads.work/lisarow)



## Translation and interpreting service

If you need help understanding this information, please contact the Translating and Interpreting Service on 131 450 and ask them to call us on 1800 560 667

**Privacy:** Transport for NSW (TfNSW) is subject to the *Privacy and Personal Information Protection Act 1998* ("PPIP Act") which requires that we comply with the Information Privacy Principles set out in the PPIP Act. All information in correspondence is collected for the sole purpose of assisting in the delivery of this project. The information received, including names and addresses of respondents, may be published in subsequent documents unless a clear indication is given in the correspondence that all or part of that information is not to be published. Otherwise TfNSW will only disclose your personal information, without your consent, if authorised by the law. Your personal information will be held by TfNSW. You have the right to access and correct the information if you believe that it is incorrect.