



Pacific Highway Upgrade through Wyong Town Centre

Project Update

January 2023

nswroads.work/wtc

The Australian Government and the NSW Government are investing \$420 million to upgrade the Pacific Highway through the Wyong Town Centre. The project will provide two lanes in each direction from Johnson Road at Tuggerah through Wyong Town Centre, and replace the existing Wyong River Road bridge with new twin bridges. The upgrade will improve traffic flow, travel times and safety for all road users as well as provide for future improvements to the public transport network.

Project benefits include



Improved facilities for pedestrians and cyclists



A highway upgrade that is compatible with current and future public transport services



Improved safety for all road users



Improved traffic flow and reliable road access to and through Wyong Town Centre



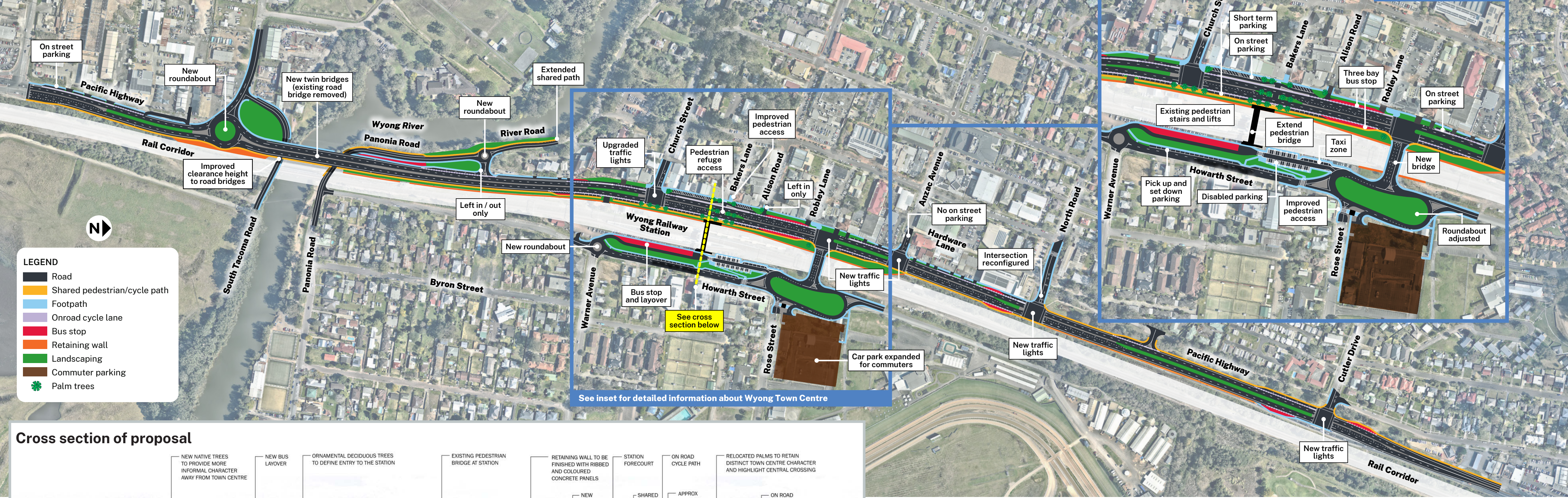
A road environment that maintains the town's identity while providing opportunities for future revitalisation and growth



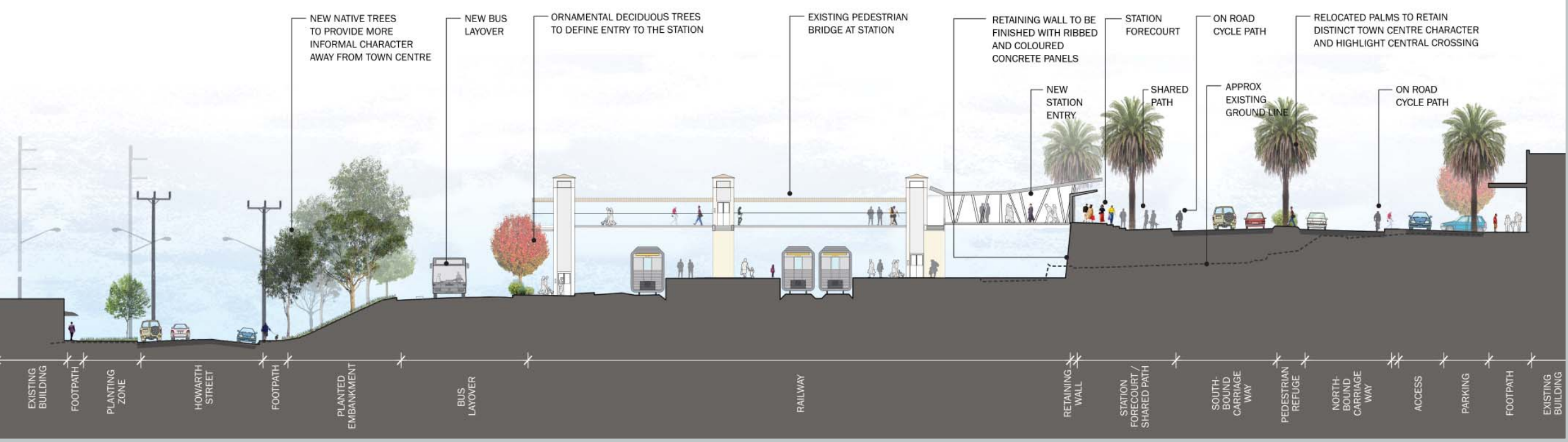
Artist's impression of proposed roundabout and new twin bridges over Wyong River



Current Pacific Highway upgrade through Wyong Town Centre concept design



Cross section of proposal



Background

The Pacific Highway is the main route through Wyong Town Centre and is a major urban arterial road connecting the northern suburbs of the Central Coast. It is currently a single lane in each direction through Wyong.

Wyong and surrounding suburbs have experienced a large increase in the volume of traffic in recent years due to sustained urban growth across the Central Coast region. An environmental assessment and concept design was displayed for feedback in October 2015 and the project was approved in February 2016.

Preliminary work including some early demolition of existing buildings and most of the land acquisition has taken place.

The project team is now reviewing key elements of the design to ensure the project still meets the current needs of the community.



Traffic through Wyong Town Centre



Current activities

Transport has carried out additional traffic surveys to understand the current traffic volumes, pedestrian, and cyclist movements in the project area and any changes since our environmental assessment.

This will ensure the project caters for current and projected future demand for all modes of transport in the area.

The project team is also engaging with the local construction industry around opportunities to partner on the delivery of this major project.



Our team presented the project to local industry at an event in the Hunter Valley in November this year



engaging with local industry to partner on project



work to commence on designs for potential early works



Increased traffic volumes due to sustained urban growth on the Central Coast



The proposal

Key features include:

- Two through lanes in each direction on the Pacific Highway
- Replacing the existing Wyong River road bridge with two new road bridges, including improving local roads such as South Tacoma Road and Panonia Road
- Upgrading the existing intersections and providing new signalised intersections to improve access for vehicles entering or exiting the highway and improve safety for pedestrians crossing the highway
- Replacing and widening the Rose Street rail bridge, improving access east of the railway line to the Baker Park precinct
- Integrating the rail interchange with bus services, taxi services, disabled and short term parking
- Long stay commuter parking consolidated into a redeveloped commuter car park located at Rose Street
- Retaining as much on-street parking as possible on the highway for businesses through Wyong Town Centre

- An off-road shared pathway along the highway connecting to the existing cycleway on Tuggerah Straight.



Next steps

Transport is continuing planning for the upgrade, including:

- Reviewing and updating the concept design, along with any associated environmental assessment
- Further detailed geotechnical and utility investigations
- Work to commence on developing designs for potential early works, including railway works and utility relocations
- Meeting with directly impacted businesses, properties owners and key stakeholders
- Finalising property acquisitions required for the project
- Ongoing consultation with the community as the project progresses, including further updates and opportunities for the community to provide feedback.



Artist's impression of proposed station upgrade



Contact us

If you have any questions or would like more information please contact our project team:



1800 864 889 (business hours)



wtc@transport.nsw.gov.au



nswroads.work/wtc



Scan the QR code to visit the project webpage.



Existing parking and bus facilities on western side of Wyong Station



This document contains important information about Transport projects in your area. If you require the services of an interpreter, please contact the Translating and Interpreting Service on 131 450 and ask them to call Transport Projects on 02 4908 7685. The interpreter will then assist you with translation.