

Changed traffic conditions for girder delivery on Tuesday 5 and Thursday 7 December 2023

Newell Highway upgrade, Parkes Bypass

November 2023



Australian Government



Transport for NSW acknowledges the Traditional Custodians of the lands on which we work and pays respect to Elders past and present.

The Parkes Bypass will improve connectivity, road transport efficiency and safety for local and interstate motorists.

Transport for NSW is continuing to deliver the Parkes Bypass and construction of the Victoria Street Bridge is commencing. The bridge will have a shared path for pedestrians and cyclists over the Parkes Bypass connecting Victoria Street and Back Trundle Road.

Victoria Street will remain closed until the completion of these works late 2024.

What work are we doing?

Six concrete girders for the bridge are being transported by truck from Newcastle to the project site. To support the safe delivery of the girders, some temporary traffic changes will be in place.

Traffic changes

Girder delivery is expected between **7am** and **6pm** on **Tuesday 5** and **Thursday 7 December 2023**, weather permitting.

We have provided a map over the page showing the traffic impacts.

A 200-metre section of **Back Trundle Road near Ross Road and Moulden Street** will be under traffic control during the delivery of each girder.

Traffic will be stopped for approximately ten minutes at a time to allow for safe entry and exit from site. This will occur on only six occurrences over the two days – when the trucks arrive.

Traffic will be stopped at **Ross Road, Back Trundle Road and Moulden Street** to allow the girder to enter site safely.

The Newell Highway will also be under traffic control just **south of Bogan Road** to facilitate truck movements in and out of the OSOM parking bay.

Managing our impacts

We aim to manage our work to avoid impacts to the community and the environment.

This includes:

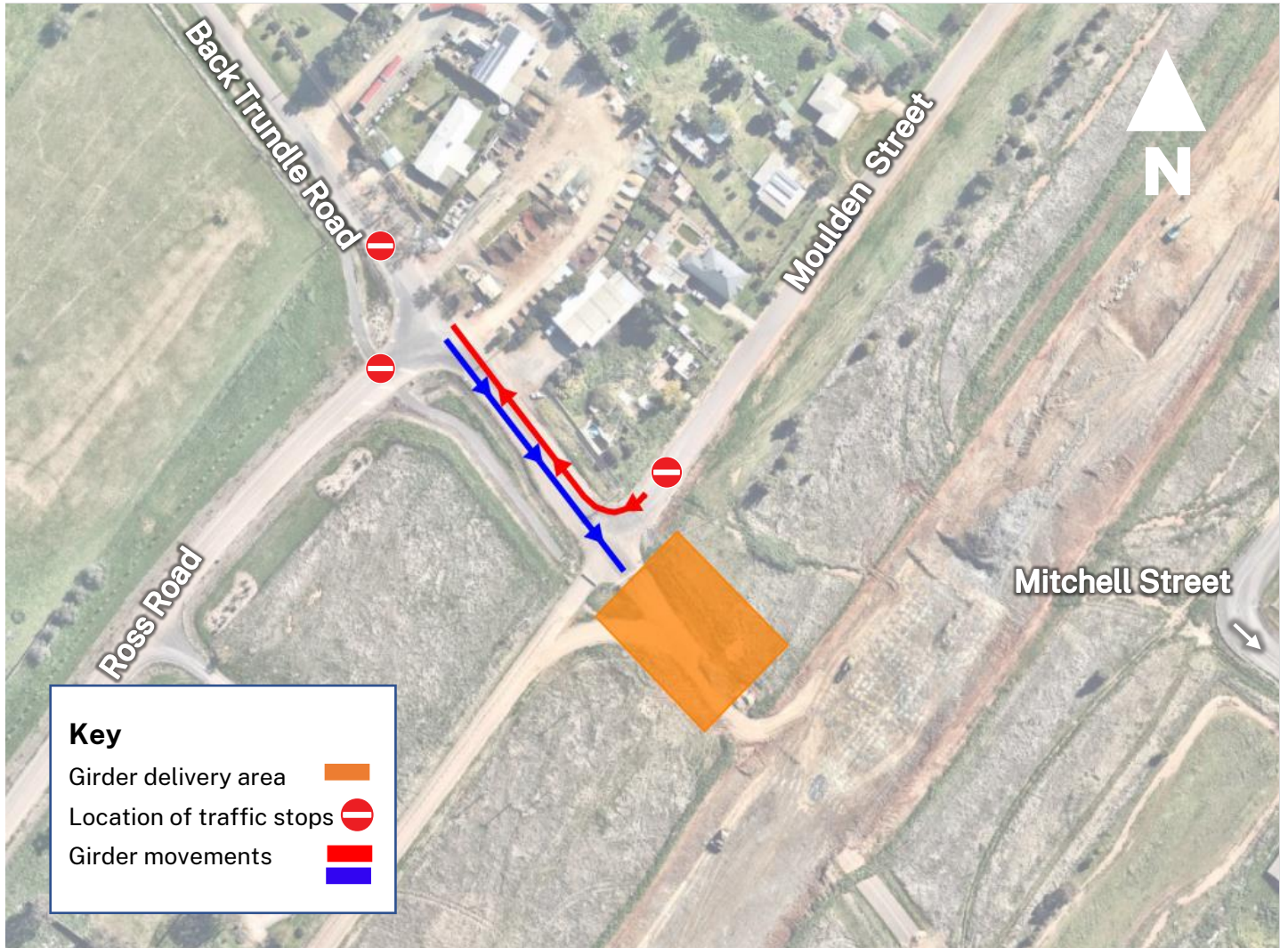
- Minimising the wait time for each girder delivery on site
- Avoiding closing the road during peak hours.
- Turning off machinery and vehicles when not in use
- Coordinating closures with school bus movements
- Traffic control in place.

If you have any questions about these works, or if we can support you in anyway, please contact us via the contact information over the page.

We thank you for your patience while this important work is carried out.



Location of girder entry onto site



Contact us



Project Infoline
1800 741 636 (option 4)



parkes.community@georgiou.com.au



nswroads.work/parkesbypass



51 – 55 Currajong Street
Parkes, NSW 2870



For the latest traffic updates:

Call 132 701, visit livetraffic.com or download the app Live Traffic NSW



Interpreter service

For languages other than English call 131 450
Arabic • Cantonese • Hindi • Mandarin • Vietnamese
لطلب خدمة الترجمة الشفهية للغات غير الإنجليزية اتصل بالرقم
131 450

獲取英語以外的其他語言傳譯協助服務可以致電**131 450**

अंग्रेज़ी के अतिरिक्त अन्य भाषाओं के लिए दुभाषिया सेवा **131 450**
पर कॉल करें

获取英语以外的其他语言口译协助服务可以致电**131 450**

Để có dịch vụ thông ngôn cho các ngôn ngữ khác tiếng Anh,
gọi số **131 450**

www.transport.nsw.gov.au/privacy-statement#Your_Privacy



Subscribe for updates at parkes.community@georgiou.com.au