



Temporary closure of Thomas Street, Parkes from Monday 20 March

Transport for NSW and head contractor Georgiou Group are progressing works on the Newell Highway Upgrade, Parkes Bypass project

To support safe movement of excavated Naturally Occurring Asbestos (NOA) material within the project site, a temporary road closure will be in place on Thomas Street between the intersections of Moulden Street and Reedsdale Road.

The closure will be in place from **Monday 20 March** to enable the works to be carried out on **weekdays** from **7am to 6pm** and **some Saturdays** from **8am to 6pm**.

The work is expected to take approximately **eight months** to complete, weather permitting. We will let you know in advance if we need to do any work outside these times.

Parkes Shire Council also have temporary road closures in place at the intersection of Bushman and Dalton Street, which impacts the route for heavy vehicles and local traffic during the Thomas Street closure. We have provided a map over the page to show the location of both the Parkes Bypass works and Council works. Please refer to Parkes Shire Council website for more information on their closure.

Traffic changes

There will be some temporary traffic changes to ensure the work zone is safe.

During work hours, Thomas Street will be closed between Moulden Street and Reedsdale Road to all vehicles.

School buses and oversize overmass (OSOM) vehicles greater than 3.5 metres in width are exempt and will be permitted access during the closure through the guidance of traffic control and an escort vehicle.

Light vehicles will be able to use the existing local road network while the Thomas Street closure is in place.

Motorists are advised to allow an extra ten minutes travel time.

Please keep to speed limits and follow the direction of traffic controllers and signs. For the latest traffic updates, you can call 132 701, visit livetraffic.com or download the Live Traffic NSW App.

How will the work affect you?

The work will involve the use of machinery which generates some noise. We will make every effort to minimize noise by turning off machinery and vehicles when not in use.

Naturally Occurring Asbestos – Work will include transporting excavated material that contains Naturally Occurring Asbestos (NOA) within the project area between Condobolin Road and Painter Street to safely encapsulate it in accordance with the Asbestos Management Plan.



This plan is developed in consultation with SafeWork and Environmental Protection Authority (EPA).

All works will be undertaken under full asbestos management controls, overseen by a Class A Asbestos Supervisor and Licensed Asbestos Assessor. Workers will be dressed in appropriate protective clothing, including coveralls and masks as an additional safety measure.

To minimise dust, we will use watercarts during works. Additional air monitors will be established around the worksite to ensure there is no migration of dust and asbestos fibres beyond the site boundary.

The NOA will be excavated from the identified work areas and transported to designated containment cells within the project boundaries and capped with clean excavated material. All works will be completed in accordance with EPA requirements.

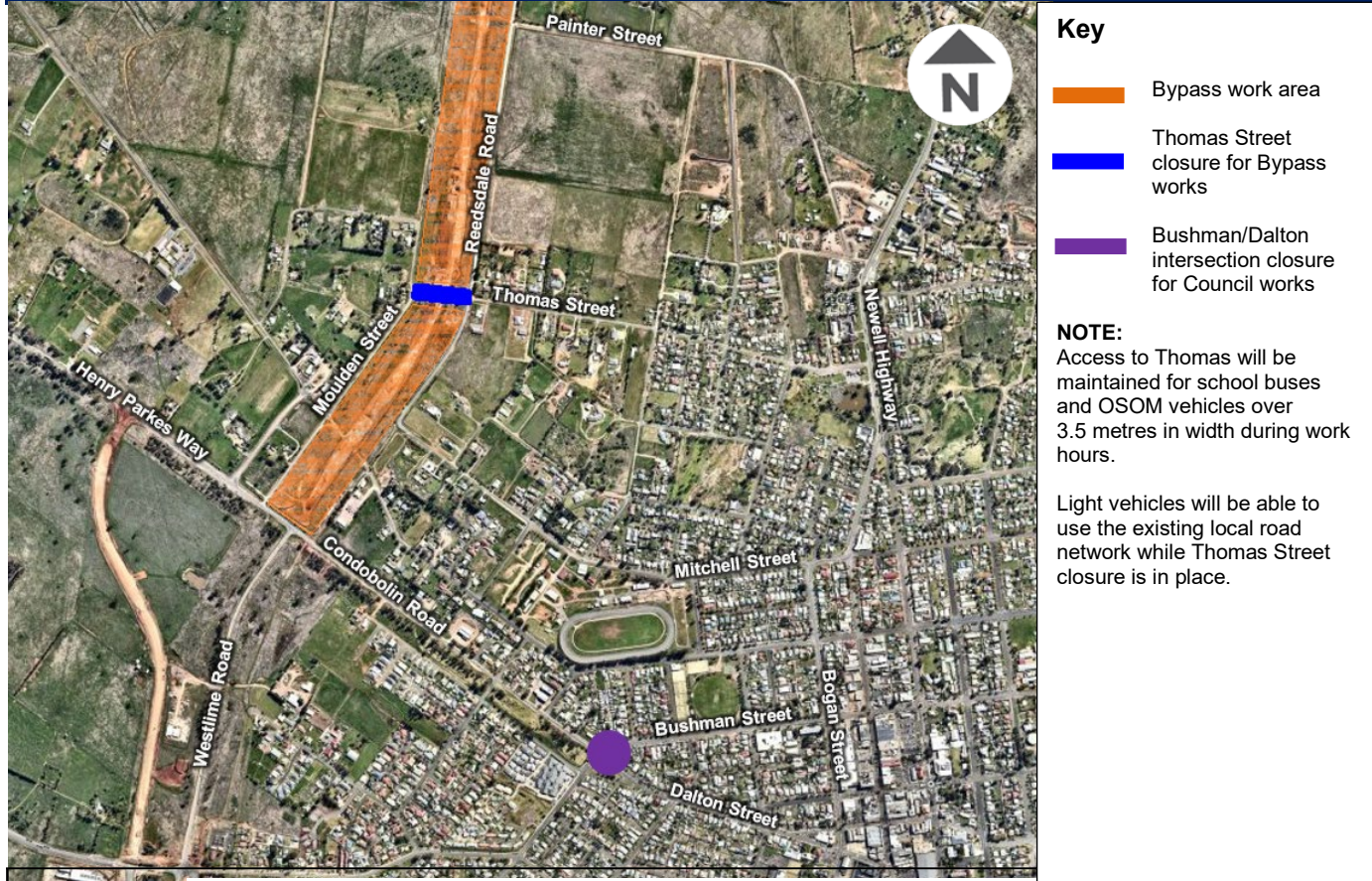
For the permitted vehicles to pass, there is a process that may take up to ten minutes to ensure the road is safe.

Contact

If you have any questions, please contact our Community Liaison Officer Taylah Jones on 1800 741 636 (option 4) or parkes.community@georgiou.com.au

For more information on our project visit nswroads.work/parkesbypass. Thank you for your patience during this important work.

Location of works and road closure in Parkes



If you need help understanding this information, please contact the Translating and Interpreting Service on 131 450 and ask them to call us on 1800 741 636 (option 4)