

# Traffic changes on the Newell Highway, north of Parkes from 16 October 2023

## Parkes Bypass

October 2023



Transport for NSW acknowledges the Traditional Custodians of the lands on which we work and pays respect to Elders past and present.

The Australian and NSW Governments are jointly funding the \$187.2 million Newell Highway upgrade, Parkes Bypass to improve connectivity, road transport efficiency and safety for local and interstate motorists.

Transport for NSW is continuing to deliver the Parkes Bypass and will now begin Northern Connection works. Once these works are complete the Newell Highway will be reopened in the final design arrangement.

### What work are we doing?

We will work in three stages, with various changed traffic conditions, so that we can assist traffic management and safely enable road construction which includes earthworks, service installation, drainage and pavement works.

#### Stage 1 (October 2023 – February 2024):

- We will install barriers on the Newell Highway and temporarily widen the western side of the road to support traffic management. We will need to stop traffic at times to place the barriers.

#### Stage 2 (February 2024 – July 2024):

- Traffic will switch onto the western side of road, while the eastern side of the new alignment is constructed behind barriers. There will be one lane of traffic in each direction during this time.

#### Stage 3 (July 2024 – December 2024):

- We will switch traffic onto the eastern side while the western side of the new alignment is constructed behind barriers.

### When and where we'll be working

A 700-metre section of the existing highway, near Maguire Road, north of Parkes will be under traffic control from **16 October 2023** until **late 2024**, weather permitting.

We will be working between **7am** and **6pm** from **Monday to Friday** and **8am to 6pm on Saturdays**.

We will let you know in advance if we need to do any work outside these times.

### What will this mean for you?

**Maguire Road** will be **permanently closed** at the intersection with the Newell Highway. Alternate access onto Maguire Road will be via Bleechmore Road.

A reduced speed limit will be in place during the works with one lane of traffic maintained in each direction wherever possible. There will be times where we will need to stop traffic.

### Managing our impacts

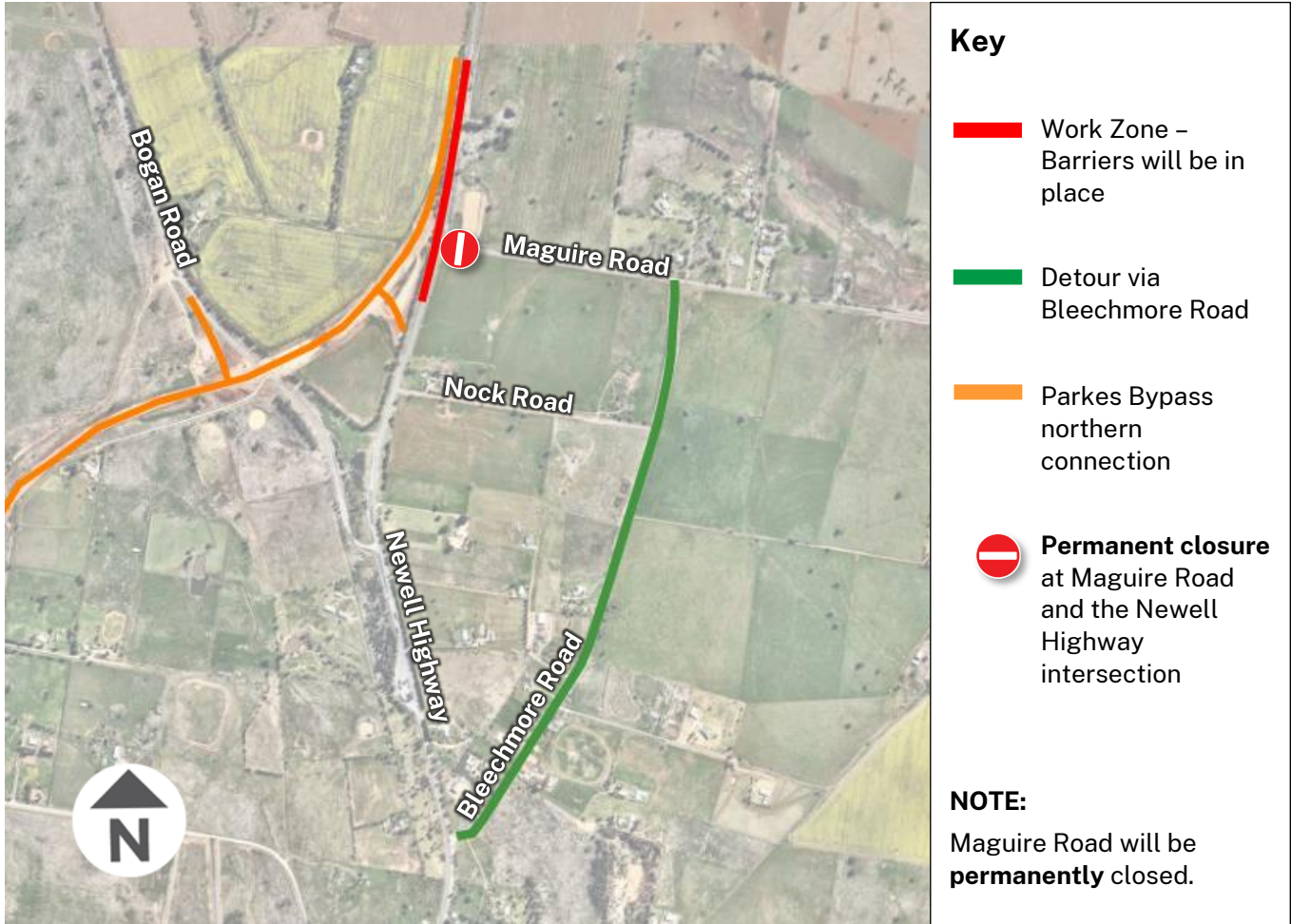
We aim to manage our work to avoid impacts to the community and the environment.

This includes:

- Using watercarts to suppress dust
- Turning off machinery and vehicles when not in use.



## Location of changed traffic conditions on the Northern Connection



## Contact us



Project Infoline **1800 741 636 (option 4)**



[parkes.community@georgiou.com.au](mailto:parkes.community@georgiou.com.au)



[nswroads.works/parkesupgrade](http://nswroads.works/parkesupgrade)



51 – 55 Currajong Street  
PARKES, NSW 2870



**For the latest traffic updates:** Call 132 701, visit [livetraffic.com](http://livetraffic.com) or download the app Live Traffic NSW



### Interpreter service

For languages other than English call 131 450  
Arabic • Greek • Hindi • Mandarin • Vietnamese

لطلب خدمة الترجمة الشفهية للغات غير الإنجليزية اتصل  
بالرقم **131 450**

Για υπηρεσίες διερμηνείας σε άλλες γλώσσες εκτός από  
τα Αγγλικά καλέστε το **131 450**

अंग्रेज़ी के अतिरिक्त अन्य भाषाओं के लिए दुभाषिया सेवा  
**131 450** पर कॉल करें

获取英语以外的其他语言口译协助服务可以致电**131 450**

Để có dịch vụ thông ngôn cho các ngôn ngữ khác tiếng  
Anh, gọi số **131 450**