

Upcoming closure of Tudor Avenue at Prospect from 2 July

Prospect Highway upgrade

July 2023



Australian Government



Transport for NSW acknowledges the Dharug people as the Traditional Custodians of the lands on which we work and pay respects to Elders past and present.

The NSW Government is upgrading 3.6 kilometres of Prospect Highway between Reservoir Road, Prospect and St Martins Crescent, Blacktown.

What are we doing?

Between **Sunday 2 July and Friday 18 August**, we will carry out works at the intersection of Tudor Avenue and Prospect Highway at Blacktown.

This will involve drainage work, excavation, placement of material, pavement construction and kerb and gutter installation.

This work will take place during day and night and will involve closing Tudor Avenue at Prospect Highway will be closed from **8pm Sunday 2 July to 6pm Friday 18 August**.

Traffic changes and detours

There will be no direct access to or from Tudor Avenue from the Prospect Highway.

Detours:

- Access to Tudor Avenue will be via Keyworth Drive and Beaufort Road. This will add approximately two minutes of extra travel time.

Motorists should follow the direction of signs and traffic control and allow extra time as there may be minor delays.

Temporary changes to property access

For properties on Prospect Highway north of Tudor Avenue, access will be from Prospect Highway.

For properties on Prospect Highway between Tudor Avenue and Keyworth Drive, access will be via Keyworth Drive. Traffic in front of these properties will travel in both directions.

Our work schedule

During this time, our work hours will be:

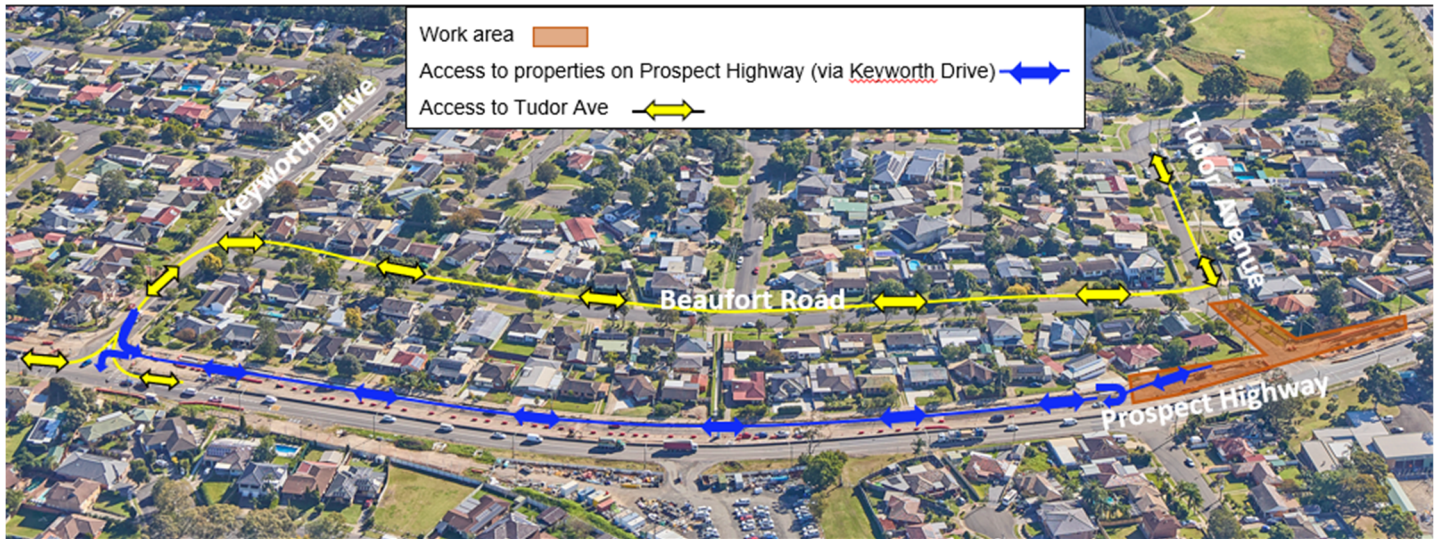
- Day – Monday to Friday 7am to 6pm and Saturday 8am to 1pm
- Night – Sunday to Thursday 8pm to 5am

How will the work affect you?

We will be working up to six night shifts over this period to reduce traffic disruption and any risks to the workers and road users during the day. The night work will involve some use of noisy machinery. We will make every effort to lessen the disturbance where possible, completing noisier work earlier in the evening and turning off vehicles when not in use.



Location of works (Tudor Avenue and Prospect Highway intersection, detour and access details)



Access arrangement for properties on Prospect Highway north of Tudor Avenue



Contact us



Project Infoline **1300 660 275**



prospecthighway@fultonhogan.com.au



nswroads.work/prospecthighway



**Get project updates direct to your inbox.
Scan the QR code of email your request**

www.transport.nsw.gov.au/privacy-statement#Your_Privacy



Interpreter service

For languages other than English call 131 450
Arabic • Greek • Hindi • Mandarin • Vietnamese

لطلب خدمة الترجمة الشفهية للغات غير الإنجليزية اتصل
بالرقم **131 450**

Για υπηρεσίες διερμηνείας σε άλλες γλώσσες εκτός από
τα Αγγλικά καλέστε το **131 450**

अंग्रेज़ी के अतिरिक्त अन्य भाषाओं के लिए दुभाषिया सेवा
131 450 पर कॉल करें

获取英语以外的其他语言口译协助服务可以致电**131 450**

Để có dịch vụ thông ngôn cho các ngôn ngữ khác tiếng
Anh, gọi số **131 450**