

Community Notification

Stanmore Station Upgrade

July 2023



Transport for NSW acknowledges the Gadigal and Wangal people of the Eora Nation as the Traditional Custodians of the lands on which we work and pay respects to Elders past and present.

The Stanmore Station Upgrade is delivered as part of the Transport Access Program. The upgrade will provide a station precinct that is accessible to people with a disability, limited mobility, parents/carers with prams and customers with luggage.

Work we are doing in July

Work includes:

- Continuing the lift cars installation, as well as glazing and bricklaying around the lift shafts
- Installing electrical, CCTV, and communication systems on platform canopies
- Investigating changes to parking on Douglas Street in order to install one new accessible car space and one kiss and ride space, as well as regrading the existing shared path on Douglas Street to be compliant with the Disability Discrimination Act. We expect eight parking spaces would be temporarily impacted during this work, with up to four to be permanently converted into the accessible parking space and the kiss and ride
- Continuing the construction of the new forecourt entry area at Douglas Street, including excavating, concreting, paving, and landscaping
- Installing safety features on the station platforms and stairs
- Installing services and landscaping on the platforms. Continuation of the upgrade of the family accessible toilet and construction of a new male ambulant toilet
- Preparing the Trafalgar Street brick wall for a new mural artwork (**see overleaf**).

When and where we'll be working

We will be working at the station and the site compound at 71 Railway Avenue. Standard working hours are **7am to 6pm, Monday to Friday, and 7am to 1pm, Saturday**. Please see the map on the back page for work locations.

Out of hours work

Some activities are required to be undertaken outside of our standard work hours. We will be working from **6am to 6pm on Saturday 15 July and Sunday 16 July**. There will be no night work. The work will include:

- Delivering materials
- Installing handrails on the underpass stairs of the station
- Resurfacing Platform 1.

What will this mean for you?

The pedestrian and cyclist path on Douglas Street will continue to be temporarily diverted during regrading work. Please follow directional signage.

There may be intermittent periods of high noise from machinery and equipment and truck movements. Traffic controllers and signage will be in place to protect road users, pedestrians, and workers.

We will direct lighting away from residential properties wherever possible.



Trafalgar Street Mural

A fun and playful representation of the Stanmore Community



The mural (shown above) is scheduled to be painted through July and is expected to take around three weeks to complete, weather permitting. Work will be behind the existing water barriers on Trafalgar Street.

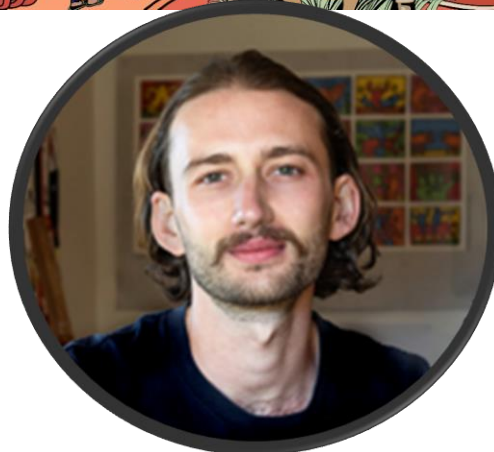
Sam Doughty's artwork invites you to observe representation of the Stanmore community, welcoming all and celebrating inclusivity.

He has referenced several local establishments in his concept to encourage us to support local businesses and interact in a friendly manner.

Doughty's artwork highlights the importance of support within a rich community experience.

He likes to explore what is often overlooked as he takes note of the buildings, colours, and emergence of nature amongst the concrete streets, which has become a recurring theme across his extensive range of artworks.

Doughty hopes to encourage everyone to pause for a moment and appreciate the world in which surrounds them.



Sam Doughty – Artist Bio

Sam Doughty is an Inner West based illustrator and muralist who has completed artworks around Newtown, Petersham, Marrickville and for a number of local businesses, musicians and creatives.

He draws inspiration from the elements and colours of the Australian land.

This mural is being curated by Art Pharmacy.



Lift Lobby Artworks – Mura Tracks

A Celebration of Aboriginal Culture

Aboriginal people have cared for Country in the Stanmore area for tens of thousands of years, with the land, sky and waters providing rich sources of food, shelter, and story.

The artwork represents the tracks that lie underneath today's roads and railways.

Stanmore Road traces a natural ridgeline used by the Aboriginal community to travel through Country.



Maddison Gibbs – Artist Bio

Maddison Gibbs is a proud Barkindji woman who grew up in Dubbo, NSW. She currently lives and works between Sydney's Inner West and Kandos, NSW.

Both artist and activist, Gibb's practice examines dual histories – focusing on stories of past and present Aboriginal societies and spirits.

Maddison has completed over 30 significant, large scale public artworks including, the restoration of the 40,000 years mural at The Block, Redfern, and was recently commissioned to create a large-scale public artwork for the new Eveleigh Precinct in Sydney.

In 2019 she was the recipient of the Australian Museum's prestigious Young Indigenous Artist Fellowship.



Work on the lift lobby artworks is expected to start in late July.

Managing our impacts

We aim to manage our work to avoid impacts to the community and the environment.

This includes:

- turning vehicles off when not in use
- reducing noise wherever possible
- directing lighting away from residential properties when possible.

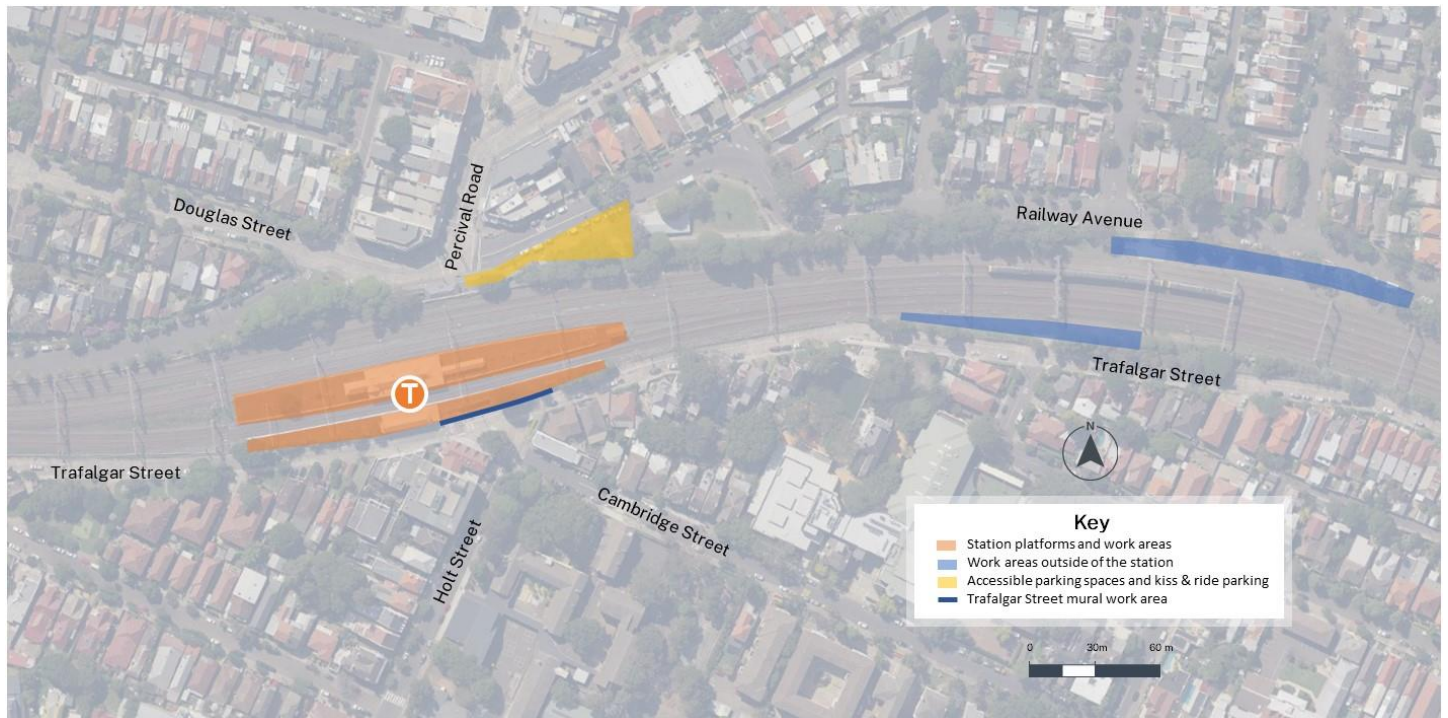
Thanks for your feedback

Transport thanks the Stanmore community for sharing feedback during our pop-up consultation held in February 2023 to help inform and shape the design of the Safer Cities upgrade at Stanmore Station.

The Stanmore Station Upgrade team will consider your feedback while it works on the concept design of the Safer Cities upgrades at Stanmore Station.

We will continue to keep you updated as the project progresses.

Location of work area



Want to learn more about projects in your area?



<https://transport.nsw.gov.au/transport-west>

Contact us



Project Infoline **1800 684 490**
24-hour Construction Response Line
1800 684 490



projects@transport.nsw.gov.au



transport.nsw.gov.au/Stanmore



PO Box 5549, Chullora, NSW 2190



Interpreter service

For languages other than English call 131 450
Arabic • Cantonese • Hindi • Mandarin • Vietnamese

لطلب خدمة الترجمة الشفهية للغات غير الإنجليزية اتصل بالرقم
131 450

獲取英語以外的其他語言傳譯協助服務可以致電**131 450**
अंग्रेजी के अतिरिक्त अन्य भाषाओं के लिए दुभाषिया सेवा **131 450**
पर कॉल करें

获取英语以外的其他语言口译协助服务可以致电**131 450**

Để có dịch vụ thông ngôn cho các ngôn ngữ khác tiếng Anh,
gọi số **131 450**