

Stanmore Station Upgrade Community Update

Transport Access Program

September 2023



Transport for NSW acknowledges the Gadigal and Wangal people of the Eora Nation as the Traditional Custodians of the lands on which we work and pay respects to Elders past and present.

The Stanmore Station Upgrade is delivered as part of the Transport Access Program. The upgrade will provide a station precinct that is accessible to people with a disability, limited mobility, parents/carers with prams and customers with luggage.

What are we doing in September?

Work includes:

- Finalising the lift installation
- Continuing to install electrical, CCTV, and communication systems on platform canopies and platform buildings
- Finalising the work on Douglas Street to create one new accessible car space and one kiss and ride space
- Regrading the existing shared path on Douglas Street to comply with requirements of the Disability Discrimination Act
- Continuing the construction of the new forecourt entry area at Douglas Street, including excavating, concreting, paving, and landscaping
- Installing services on the platforms
- Preparation for the mural artwork on Trafalgar Street
- Continuing work for the lift lobby heritage artwork panels
- Miscellaneous work on the platforms including platform stencils, painting touch ups, handrails, heritage interpretation signs and wayfinding signage.

When and where we'll be working

We will be working at the station and the site compound at 71 Railway Avenue. Standard working hours are **7am to 6pm, Monday to Friday**, and **7am to 1pm, Saturday**.

Out of hours work

Some activities are required outside our standard work hours. We will be working from **6am to 6pm on Saturday 9 and Sunday 10 September**.

What will this mean for you?

The pedestrian and cyclist path on Douglas Street will continue to be temporarily diverted during regrading work. Please follow directional signage.

Up to four car parking spaces on Douglas Street will be permanently converted into one kiss and ride space and one accessible car space. While this work is being done, up to eight parking spaces will be temporarily unavailable.

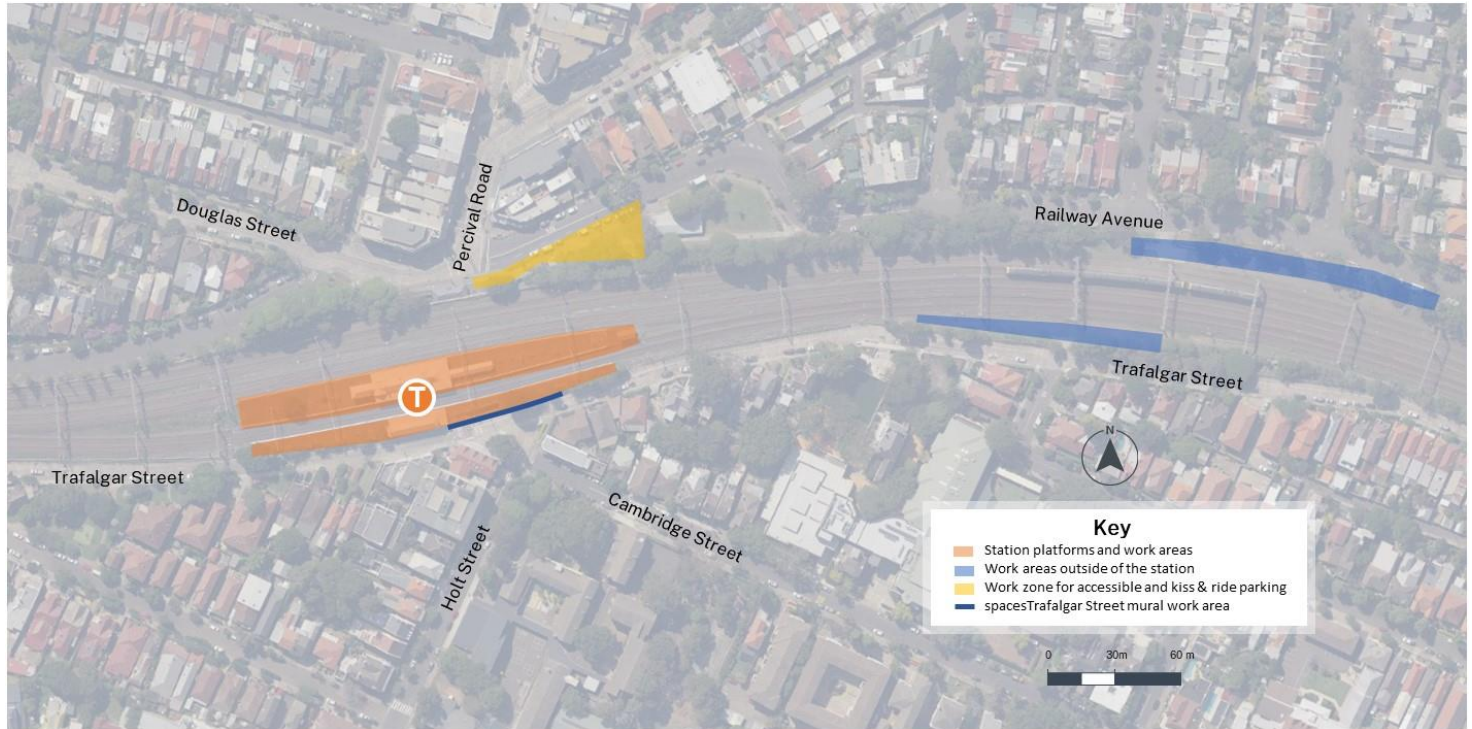
There may be intermittent periods of high noise from machinery and equipment and from truck movements. Traffic controllers and signage will be in place to protect road users, pedestrians and workers if required.



Managing our impacts

We aim to manage our work to avoid impacts to the community and the environment. This includes turning vehicles off when not in use, reducing noise wherever possible, and directing lighting away from residential properties when possible.

Location of work areas



Want to learn more about projects in your area?



<https://projects.transport.nsw.gov.au>

Contact us



Project Infoline **1800 684 490**
24-hour Construction Response Line
1800 684 490
projects@transport.nsw.gov.au
transport.nsw.gov.au/Stanmore
PO Box 5549
Chullora, NSW 2190



Interpreter service

For languages other than English call 131 450
Arabic • Cantonese • Hindi • Mandarin • Vietnamese
لطلب خدمة الترجمة الشفهية للغات غير الإنجليزية اتصل بالرقم
131 450
獲取英語以外的其他語言傳譯協助服務可以致電**131 450**
अंग्रेज़ी के अतिरिक्त अन्य भाषाओं के लिए दुभाषिया सेवा **131 450**
पर कॉल करें
获取英语以外的其他语言口译协助服务可以致电**131 450**
Để có dịch vụ thông ngôn cho các ngôn ngữ khác tiếng Anh,
gọi số **131 450**



Subscribe for updates at projects@transport.nsw.gov.au

www.transport.nsw.gov.au/privacy-statement#Your_Privacy