

# Community Notification

## Stanmore Station Upgrade

August 2023



Transport for NSW acknowledges the Gadigal and Wangal people of the Eora Nation as the Traditional Custodians of the lands on which we work and pay respects to Elders past and present.

The Stanmore Station Upgrade is delivered as part of the Transport Access Program. The upgrade will provide a station precinct that is accessible to people with a disability, limited mobility, parents/carers with prams and customers with luggage.

### What work we are doing in August?

We will be:

- Completing the lift cars installation
- Continuing to install electrical, CCTV, and communication systems on platform canopies
- Making changes to parking on Douglas Street to create one new accessible car space and one kiss and ride space.
- Re-grading the existing shared path on Douglas Street to be compliant with requirements of the Disability Discrimination Act.
- Continuing the construction of the new forecourt entry area at Douglas Street, including excavating, concreting, paving, and landscaping
- Installing services and landscaping on the platforms
- Finalizing the construction of a new male ambulant toilet

- Preparation works for the mural artwork on Trafalgar Street
- Preparation works for the lift lobby heritage artwork including light steel framing, sheeting, and artwork panels.

### When and where we'll be working

We will be working at the station and the site compound at 71 Railway Avenue. Standard working hours are 7am to 6pm, Monday to Friday, and 7am to 1pm, Saturday.

### What will this mean for you?

The pedestrian and cyclist path on Douglas Street will be temporarily diverted during regrading works. Please follow directional signage.

Up to four car parking spaces to be permanently converted and up to eight parking spaces will be temporarily unavailable during the creation of the accessible parking space and kiss and ride.

There may be intermittent periods of high noise from machinery and equipment and from truck movements.

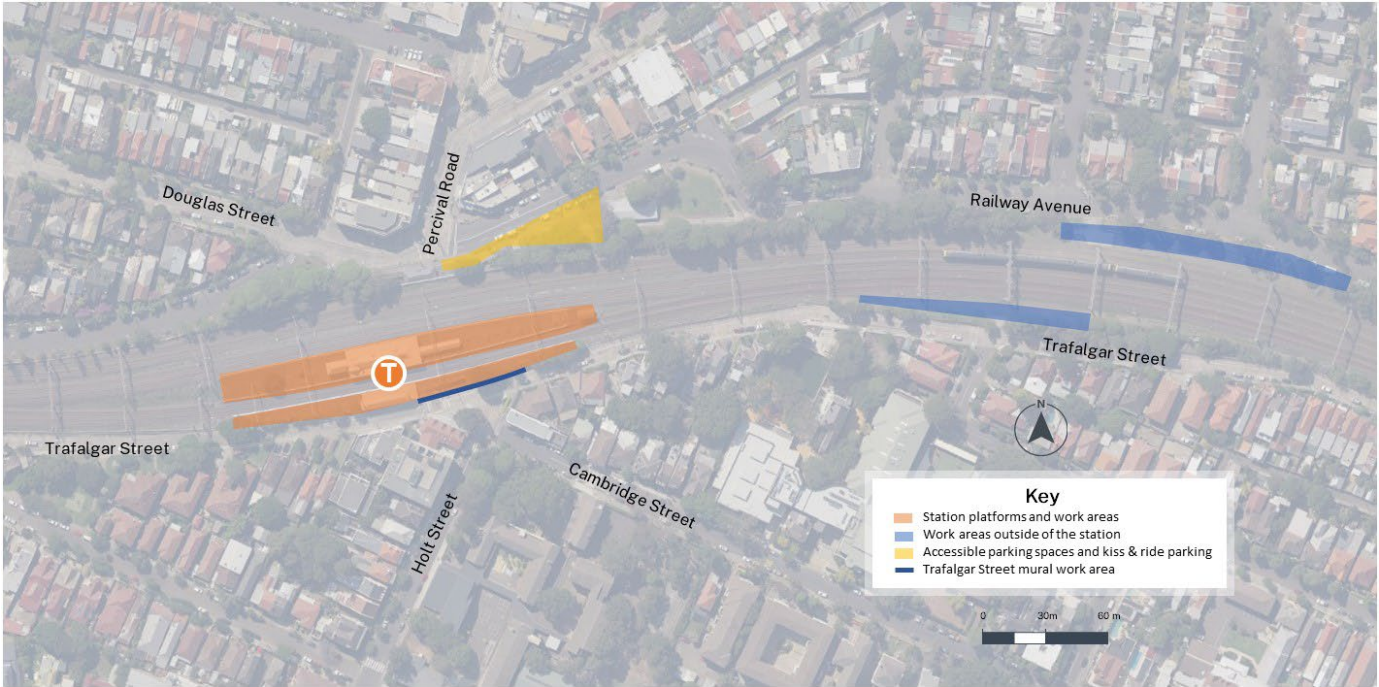
Traffic controllers and signage will be in place to protect road users, pedestrians and workers if required.



## Managing our impacts

We aim to manage our work to avoid impacts to the community and the environment. This includes turning vehicles off when not in use, reducing noise wherever possible, and directing lighting away from residential properties when possible.

## Location of work areas



Want to learn more  
about projects in  
your area?



<https://transport.nsw.gov.au/transport-works>

## Contact us



Project Infoline **1800 684 490**

24-hour Construction Response Line

**1800 684 490**



[projects@transport.nsw.gov.au](mailto:projects@transport.nsw.gov.au)



[transport.nsw.gov.au/Stanmore](https://transport.nsw.gov.au/Stanmore)



PO Box 5549

Chullora, NSW 2190



### Interpreter service

For languages other than English call 131 450

Arabic • Cantonese • Hindi • Mandarin • Vietnamese

طلب خدمة الترجمة الشفهية للغات غير الإنجليزية اتصل بالرقم

**131 450**

獲取英語以外的其他語言傳譯協助服務可以致電**131 450**

अंग्रेज़ी के अतिरिक्त अन्य भाषाओं के लिए दुभाषिया सेवा **131 450**

पर कॉल करें

获取英语以外的其他语言口译协助服务可以致电**131 450**

Để có dịch vụ thông ngôn cho các ngôn ngữ khác tiếng Anh,  
gọi số **131 450**



Subscribe for updates at [projects@transport.nsw.gov.au](mailto:projects@transport.nsw.gov.au)

[www.transport.nsw.gov.au/privacy-statement#Your\\_Privacy](https://www.transport.nsw.gov.au/privacy-statement#Your_Privacy)