

Sydney Harbour Bridge Cycleway Northern Access Project

Site investigations from Monday 20 February 2023

In April 2022, the Minister for Cities and Active Transport announced that a team led by ASPECT Studios had won a competition to design a linear bike ramp at the northern end of the Sydney Harbour Bridge Cycleway. Since the competition, Transport for NSW have been working with the ASPECT team to progress the design for the cycleway.

As part of the detailed design process, site investigations are required on Lavender, Burton and Alfred Streets. These investigations commenced in December and will continue in late February and March.

Upcoming work in February and March

From **Monday 20 February** to **Tuesday 7 March 2023** site investigations will be carried out on Lavender, Burton and Alfred streets in Milsons Point to inform the design for the Sydney Harbour Bridge Cycleway Northern Access Project. This work will include:

- geotechnical investigation and core sampling to assess soil and ground conditions
- service investigations to determine the location of underground utilities.

Equipment to be used includes a vacuum truck, delivery trucks, road saw, and compaction equipment, which will move between the test and investigation sites. Steel road plates will be placed on both the road and footpaths when needed.

Where possible, measures will be implemented to reduce noise, including turning off vehicles and equipment when not in use, using non-tonal reversing beepers and installing noise blankets where possible.

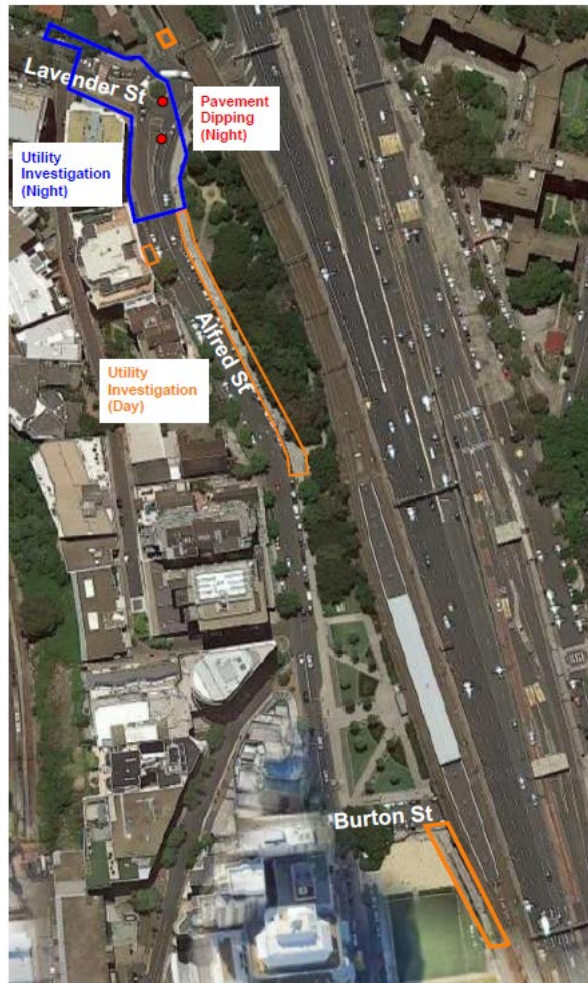
Upcoming night work Monday 27 February, Tuesday 28 February, Monday 6 March and Tuesday 7 March

Night work will take place between the hours of 6pm to 7am on **Monday 27 February, Tuesday 28 February, Monday 6 March** and **Tuesday 7 March**. These investigations are required to be undertaken at night to minimise the impacts on vehicle and pedestrian movements and ensure the safety of our workers and the public.

Where possible, measures will be implemented to reduce noise, including turning off vehicles and equipment when not in use, using non-tonal reversing beepers and installing noise blankets where possible. Please follow the directions of traffic control during this work.

Residents who are directly impacted will be contacted in advance by Downer, the contractor carrying out this investigation work.

Work schedules are subject to change due to permits, weather and site conditions.



Map showing areas for geotechnical and utility investigations

Temporary parking impacts

From **6am Monday 20 February to 6pm Tuesday 7 March**, up to 14 parking spaces on Alfred Street and four parking spaces on Burton Street will be intermittently closed to enable this work. Signage will be in place during this closure period. Please use alternate street parking during this time.

Temporary fencing

For the safety of our workers and pedestrians, a temporary fence will be installed to surround the drill rig and vacuum trucks, including any trenches and bore holes.

Signage will be in place directing pedestrians to alternate routes while the work is completed. Please follow the directions on the temporary signs and traffic control.

Construction hours

Standard construction hours are **7am to 6pm, Monday to Friday** and **8am to 1pm, Saturdays**.

The site investigation work will not disrupt the operation of the Kirribilli Markets.

We understand our work may cause an inconvenience and we thank you for your patience during this time.

Have your say

If you have any questions or would like more information, please contact our project team:

1800 581 595

1800 775 465 (24-hour Construction Response Line)

sydneyharbourbridgeprojects@transport.nsw.gov.au

nswroads.work/cycleway



Translating and interpreting service

If you need help understanding this information, please contact the Translating and Interpreting Service on **131 450** and ask them to call us on **1800 581 595**