

# Thornleigh Station Upgrade

## Transport Access Program

Community update - May 2023



Transport for NSW acknowledges the Darug and Guringai peoples as the Traditional Custodians of the lands on which we work and pay respects to Elders past and present.

The Thornleigh Station Upgrade is part of the Transport Access Program to provide a station that is accessible to people with a disability, limited mobility, parents / carers with prams, and customers with luggage.

### What work are we doing?

During May we will be continuing work on:

- final lift fit outs, including testing and commissioning
- clean-up work on Railway Parade and Thornleigh Station.

During May we will also start final installation and testing of the electrical upgrades to the station infrastructure.

### When and where we'll be working

Our standard scheduled work hours are **Monday to Friday from 7am until 6pm**, and **on Saturday from 8am until 1pm**.

### What will this mean for you?

You may notice:

- workers and vehicles
- traffic controllers and signage
- footpath closures
- pedestrian and cyclist detours with traffic controllers on site to guide you
- noise from machinery and equipment.

### How this may impact you?

We will be using a range of equipment throughout which includes excavators, jackhammers, compactors, trucks, grinders and various hand and power tools.

Our work may be noisy at times. Where possible measures will be implemented to reduce noise including turning off equipment when not in use, placing equipment as far away as possible from properties and using non-tonal reversing beepers.

### Managing our impacts

We aim to manage our work to avoid impacts to the community and the environment.

This includes:

- reducing our noise as much as possible
- the use of noise blankets where possible, replacing reversing beepers with clickers
- traffic control and signage will be in place
- directional lighting pointed away from residential properties wherever possible.

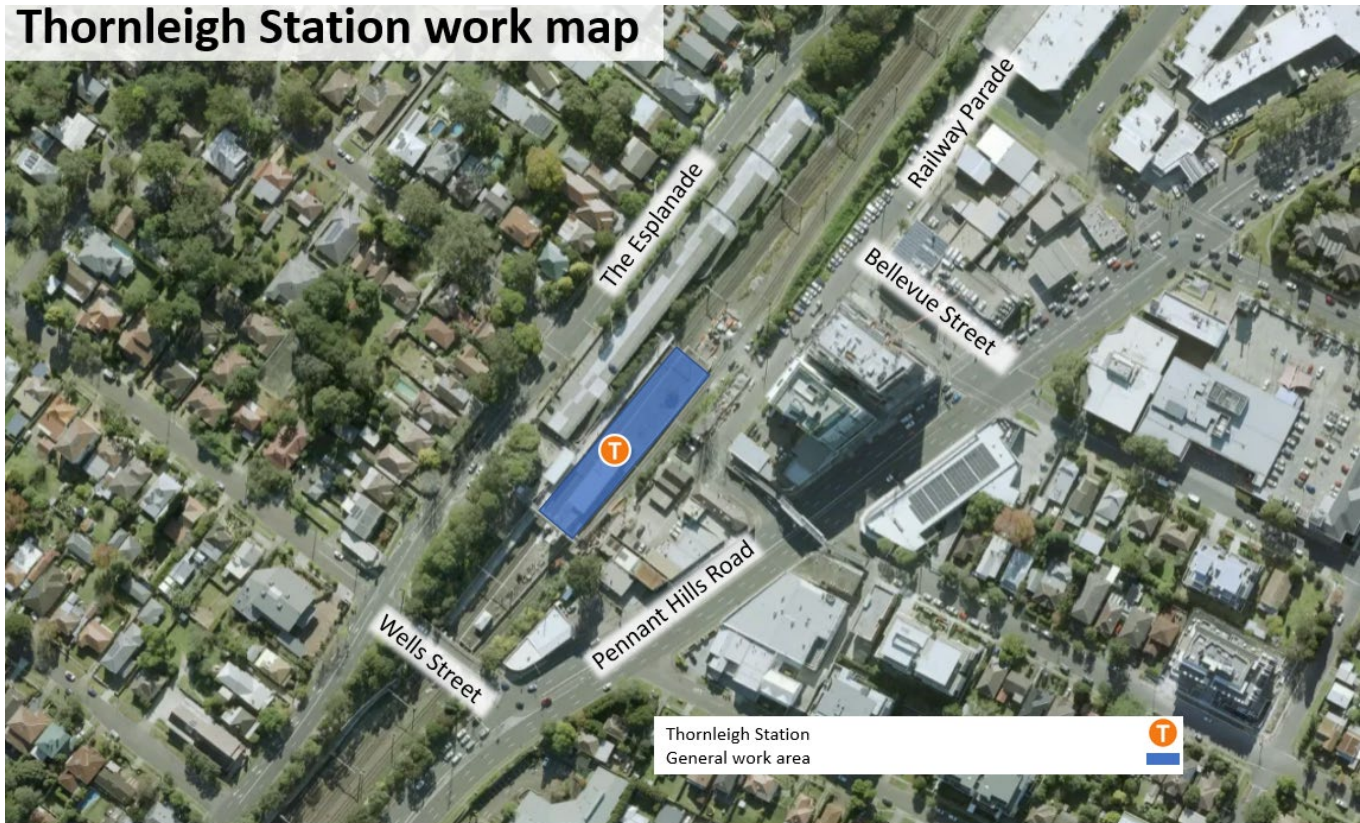
### Changes to scheduled works

Work schedules are subject to change due to permits, weather, and site conditions. Further notification will be provided should there be a significant change to the construction program.



## Location of work area

### Thornleigh Station work map



## Contact us



Project Infoline **1800 684 490**



[projects@transport.nsw.gov.au](mailto:projects@transport.nsw.gov.au)



[transport.nsw.gov.au/projects/current-projects/thornleigh-station-upgrade](https://transport.nsw.gov.au/projects/current-projects/thornleigh-station-upgrade)



## Interpreter service

For languages other than English call 131 450  
Arabic • Cantonese • Hindi • Mandarin • Vietnamese

لطلب خدمة الترجمة الشفهية للغات غير الإنجليزية اتصل بالرقم  
**131 450**

獲取英語以外的其他語言傳譯協助服務可以致電**131 450**

अंग्रेज़ी के अतिरिक्त अन्य भाषाओं के लिए दुभाषिया सेवा **131 450**  
पर कॉल करें

获取英语以外的其他语言口译协助服务可以致电**131 450**

Để có dịch vụ thông ngôn cho các ngôn ngữ khác tiếng Anh,  
gọi số **131 450**



Subscribe for updates at [projects@transport.nsw.gov.au](mailto:projects@transport.nsw.gov.au)

[https://www.transport.nsw.gov.au/privacy-statement#Your\\_Privacy](https://www.transport.nsw.gov.au/privacy-statement#Your_Privacy)