

Community Notification

Tuggerah Station Upgrade

December 2023 and January 2024



Transport for NSW acknowledges the Darkinjung people as the Traditional Custodians of the lands on which we work and pay respects to Elders past and present.

The NSW Government is improving accessibility at Tuggerah Station

Transport for NSW is upgrading Tuggerah Station. The upgrade will provide a train station that is accessible to those with a disability or limited mobility, parents/carers with prams and customers with luggage.

What we are doing in December 2023 and January 2024?

Work includes:

- general construction works, including delivery and removal of plant and materials
- surveying and site investigations
- adjustments to hoardings and fencing to facilitate construction works
- removal of trees and vegetation to enable works
- continuation of piling work
- formwork, reinforcement and concrete pours
- crane movements to help with construction work
- earthwork activities including waste classification and removal of waste materials
- relocation of lights, cameras and signs on both platforms
- installation of two power poles to allow relocation of overhead power on the Pacific Highway side of the station
- removal of redundant power pole within the Byrant Drive carpark area
- completion of new structural supports under Platform 1
- installation of pits for utility connections for the station.

Drivers will continue to see construction vehicle movement and traffic control set-up on the Pacific Highway and Anzac Road.

During December and January, there will be continued temporary changes to car parking arrangements at Tuggerah Station, to allow for utility relocation. Signage will be in place with further details.

When we'll be working

Standard construction hours are **7am to 6pm Monday to Friday** and **8am to 1pm Saturday**. We will notify nearby residents and businesses in advance if we need to work outside these times.

Out of hours

In order to prepare for essential work required in January, Saturday construction hours will be extended from **8am to 1pm to 7am to 6pm** throughout December.

From **2am Saturday 6 January** until **7am Monday 8 January 2024** we will be working outside of our standard construction hours to continue with the installation and commissioning of two new power poles on the Pacific Highway side of the station.

For the safety of workers and motorists, traffic control and single lane closure will be in place from **8pm Saturday – 5am Monday**.

We will also be continuing reinforcement work under Platform 1.

New hoardings will be installed around the station to facilitate the next stages of the station upgrade commencing in the coming months.

What will this mean for you?

Various equipment including crane, excavators, trucks including tipper, flat tray and hiab, elevated work platform, concrete trucks and concrete pumps, powered and manual hand tools will be used at the station.

Temporary bus stop relocation

We will be temporarily relocating the current bus stop on Pacific Hwy near the intersection of Anzac



Rd. The bus stop will be moved about 150 metres south towards Wyong Rd. This will be in place during the out of hours work planned between Saturday 6th and Sunday 7th January 2024. This temporary relocation is required to enable the installation of two new power poles at the intersection of Pacific Hwy and Anzac Rd.

Vehicle and pedestrian access will be maintained under the direction of traffic management. Please adhere to all signage and the directions of traffic control and allow for additional travel times during this period.

Managing our impacts

There may be some occasional, minor disruptions to pedestrians, but platforms and footbridge access will remain open all weekend as the station operates normally.

A traffic control team will be available to assist with any construction impacting pedestrian movements.

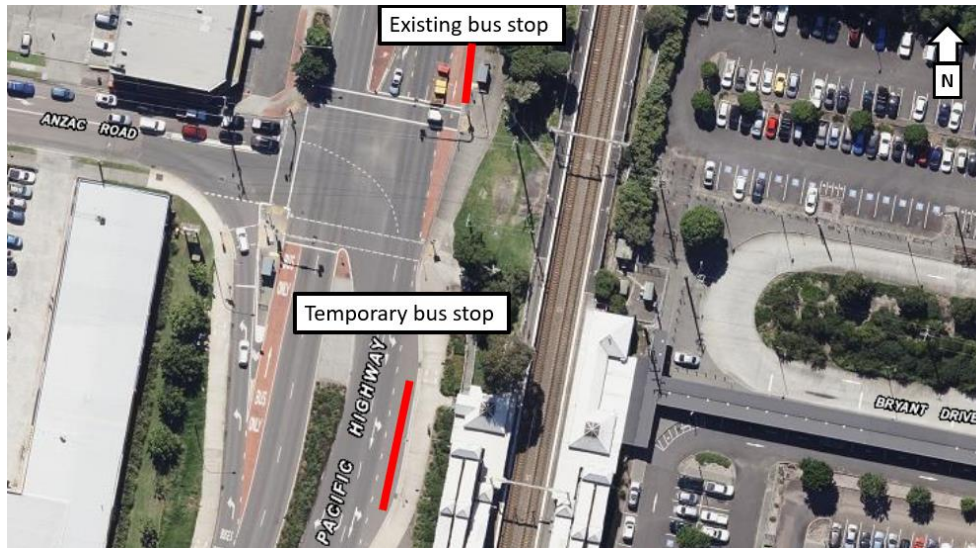
This work may be noisy, however we aim to avoid impacts to the community and the environment where possible by:

- fencing off areas for the safety of commuters
- using noise blankets and turning off machinery and equipment when not in use.

Thank you for your patience as we carry out this important work.

Upcoming site shutdown

Work on the Tuggerah Station Upgrade will continue until **Saturday 23 December 2023**, resuming after the Christmas shutdown on **Tuesday 2 January 2024**.



Contact us



Project Infoline **1800 775 465**



projects@transport.nsw.gov.au



transport.nsw.gov.au/projects/current-projects/tuggerah-station-upgrade



Interpreter service

For languages other than English call 131 450
Arabic • Greek • Hindi • Mandarin • Vietnamese

لطلب خدمة الترجمة الشفهية للغات غير الإنجليزية اتصل
بالرقم **131 450**

Για υπηρεσίες διερμηνείας σε άλλες γλώσσες εκτός από
τα Αγγλικά καλέστε το **131 450**

अंग्रेज़ी के अतिरिक्त अन्य भाषाओं के लिए दुभाषिया सेवा
131 450 पर कॉल करें

获取英语以外的其他语言口译协助服务可以致电**131 450**

Để có dịch vụ thông ngôn cho các ngôn ngữ khác tiếng
Anh, gọi số **131 450**

www.transport.nsw.gov.au/privacy-statement#Your_Privacy



To subscribe to the email distribution list for this project, please contact projects@transport.nsw.gov.au

Page 2 of 2