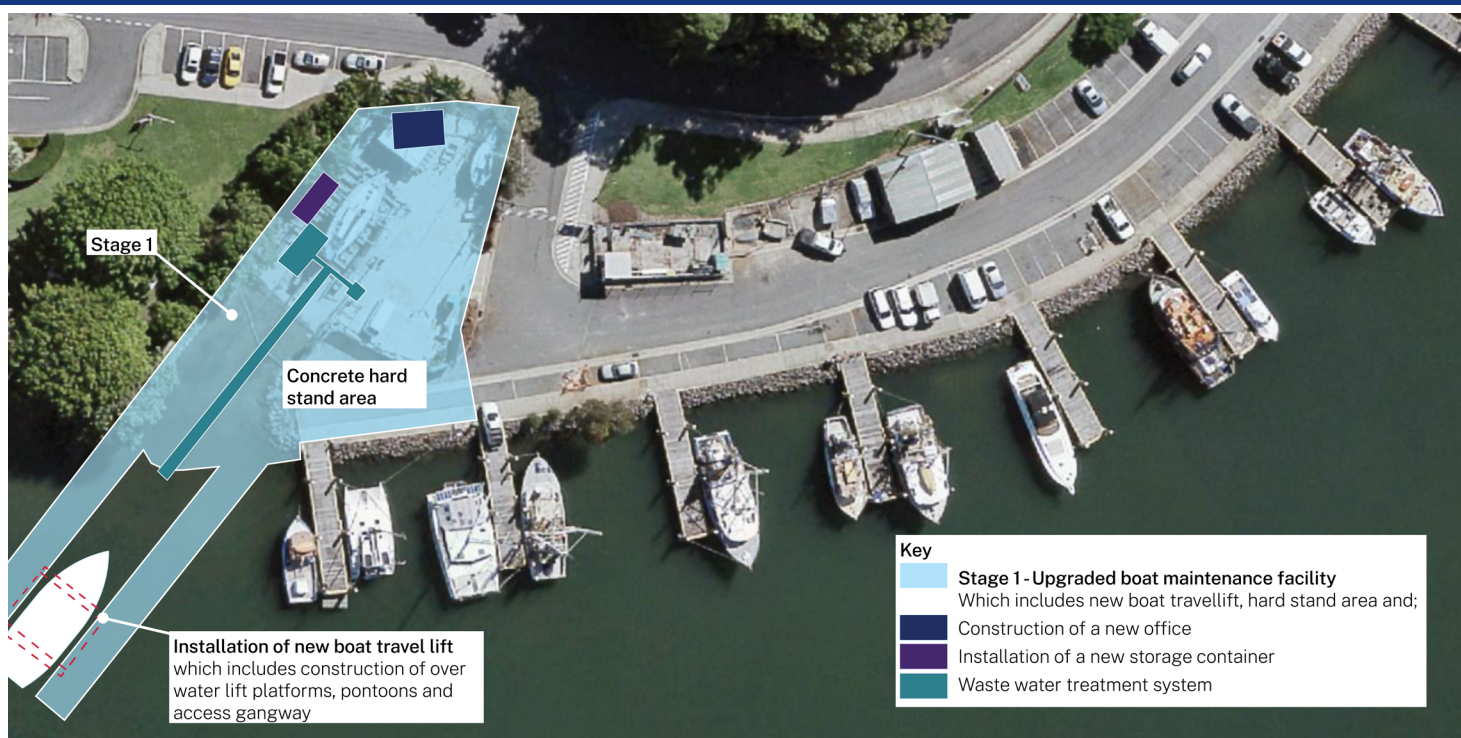


# Tweed Heads Boat Maintenance Facility

December Community Update

December 2022



Location of the Boat Maintenance Facility Project in Terranora Terrace, Tweed Heads.

## Waterside works are underway

All piling works have been completed for the Tweed Heads Boat Maintenance Facility project. A total of 18 steel piles were installed across a three month program to support the 13 travel lift runway beams. The work involved navigating the sites rocky waterbed during installation process.



Installation of the steel piles.

The pre-cast runway beams for the travel lift were fabricated offsite and have been installed. The waterside works including the completion of the revetment, floating pontoons, travel lift walkway structure and gangway will be completed progressively prior to the Christmas break.



Offsite fabrication of the precast runway beams.

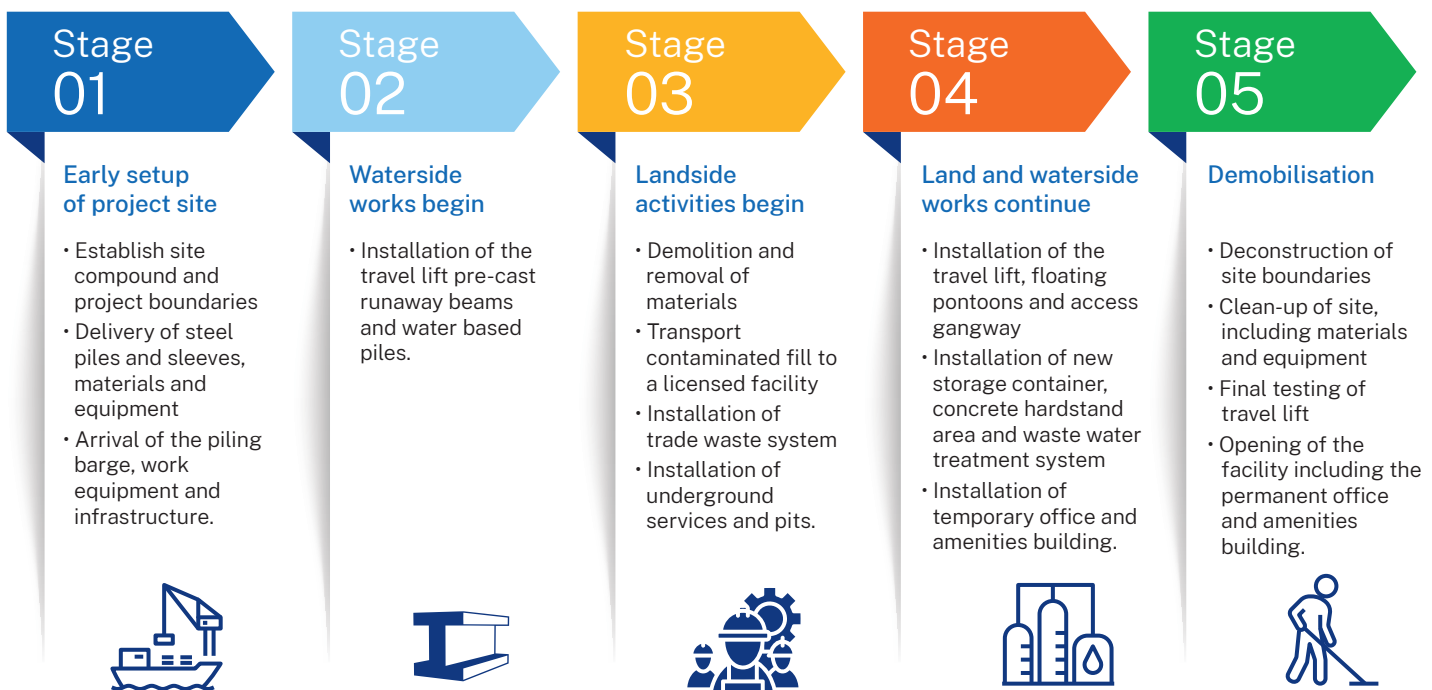
## Landside Works

A Detailed Site Investigation (DSI) for the site was completed in July 2022. The results identified contamination on site. The type of contamination present is commonly occurring in many older slipway operations across NSW.

Since our last update, the Remediation Action Plan (RAP) has been finalised to support the design and planning for the travel lift. The landside works include a full remediation of the site and the 'cap and contain' approach as outlined in the 2021 Review of Environmental Factors (REF). The REF is available on the project website.

The winch housing office and amenities block have been demolished. The final approvals are currently pending for the removal of asbestos and soils. Work has commenced on the demolition of the sites existing slab, which will be removed in accordance with the RAP controls, further reducing exposure to the site contamination. The site is expected to be remediated prior to Christmas with excavation and installation of the trade waste system, office, storage container, services and inspection completed in 2023.

## What to expect on site



The works are expected to be completed in the **first quarter of 2023**, weather, tidal conditions and COVID-19 impacts permitting.

# Contact us

If you have any questions or would like more information on the Tweed Heads Boat Maintenance Facility project, please contact our project team:



1800 955 818 (during business hours)



tweedheads@transport.nsw.gov.au



Tweed Heads Boat Maintenance Facility,  
Engagement & Education, NSW Maritime,  
33 James Craig Road, Rozelle NSW 2039

Scan the QR code to visit  
the project webpage and  
learn more



Examples of what the 75-tonne boat travel lift will look like.



## Translating and interpreting service

If you need help understanding this information, please contact the Translating and Interpreting Service on 131 450 and ask them to call us on 1800 770 973.



December 2022

Transport for NSW ("TfNSW") is subject to the Privacy and Personal Information Protection Act 1998 ("PPIP Act") which requires that we comply with the Information Privacy Principles set out in the PPIP Act. All information in correspondence is collected for the sole purpose of assisting in the delivery of this project. The information received, including names and addresses of respondents, may be published in subsequent documents unless a clear indication is given in the correspondence that all or part of that information is not to be published. Otherwise we will only disclose your personal information, without your consent, if authorised by the law. Your personal information will be held by us at 27 Argyle Street, Parramatta. You have the right to access and correct the information if you believe that it is incorrect.

---

## Frequently asked questions

### Is the slipway at Tweed Heads open?

The slipway is currently closed. The slipway will re-open when the project is completed in the first quarter of 2023.

### Why was the slipway closed?

The slipway was closed allowed us to carry out initial investigations, planning and early work prior to the start of construction.

### What size will the travel lift be?

The travel lift for this project will be 75-tonne. The travel lift being used on the project is custom-built to have an internal width of 8.4 metres, which is wider than a standard 75-tonne boat travel lift and is similar width to the 100-tonne travel lift on the Gold Coast.

### When will the contamination remediation activities be completed?

The compliance recommendations for the contamination will be completed during the early works phase of the project.

### When will construction start?

Construction began on the project in late August 2022. The contract was awarded to SMC Marine Pty Ltd.

### Why isn't Stage 2 being constructed now?

The proposed Stage 2 works would allow for an expansion of the hardstand area at a future time. While Stage 2 was planned, designed and consultation was completed, Stage 2 will require additional funding which will be considered as part of future budget submissions. To find out more about Stage 2 please refer to our previous community update, which is available on the project website.

### Now the slipway is closed, what will happen if I need emergency repairs or inspections?

We suggest that you develop an emergency repair or inspection plan for your vessel and investigate local alternatives. If you require an emergency lift, please reach out via email to [Property.Management@transport.nsw.gov.au](mailto:Property.Management@transport.nsw.gov.au).

In emergency situations vessel operators should contact 000 and seek assistance from NSW Water Police and Marine Rescue.

### Is on-water fueling facility included in the project?

No, because it is not part of the project scope.

### Will the travel lift platform impact navigation in the area?

The design and location of the travel lift was developed to ensure it continues to provide safe navigation and access. At the start of construction, temporary navigational buoys were installed on the southern side of the river for the duration of the project to indicate the work area. Please be aware there may be temporary changes in the area and follow any on-water navigational aids. The appropriate navigational aids or signage will be put in place to advise navigation changes when the project is completed.