

Arncliffe to Tempe Signalling Upgrade

More Trains, More Services

February 2024



Transport for NSW pays respect to Elders past and present, and recognises and celebrates the diversity of Aboriginal peoples and their ongoing cultures and connections to the lands and waters of NSW.

The More Trains, More Services program will simplify and modernise the rail network creating high capacity, turn up and go services for many customers. It means customers can expect more frequent train services, with less wait times, less crowding on a simpler and more reliable network.

This project will upgrade signalling infrastructure between Arncliffe and Tempe to enable an increase in services on the T4 Eastern Suburbs & Illawarra Line.

The project scope includes investigation work and installation of the following:

- Signals for train drivers (similar to traffic lights)
- Speed signs
- Cables and cable support (such as containments designed to safely hold and protect cables)
- Other signalling equipment.

A contract has been awarded to Next Rail, a partnership between John Holland, Jacobs and Transport for NSW, to start early work on the Arncliffe to Tempe Signalling Upgrade project.

Next steps

Over the coming weeks we will start geotechnical investigations inside the rail corridor. This work will involve the use of a drill rig and excavators to collect soil samples, which will help us understand the ground conditions and inform the design of the project.

Main construction is expected to start in mid-2024 and we will keep you updated as our work progresses.

When we'll be working

Standard construction hours are between **7am and 6pm Monday to Friday and 8am and 1pm on Saturdays.**

Some construction activities are carried out out-of-hours. We schedule the majority of our out-of-hours work to coincide with Sydney Trains' track work periods, where no passenger services are running. This is to ensure the safety of our construction team and customers.

Out-of-hours work is planned from 10pm Friday 9 February to 2am Monday 12 February 2024.

Where we'll be working

Investigation work will take place inside the rail corridor as shown on the map overleaf.

Temporary laydown areas along the rail corridor will be used for deliveries, storage of materials and equipment, worker briefings and parking.

What will this mean for you?

During our work in February 2024, you may notice:

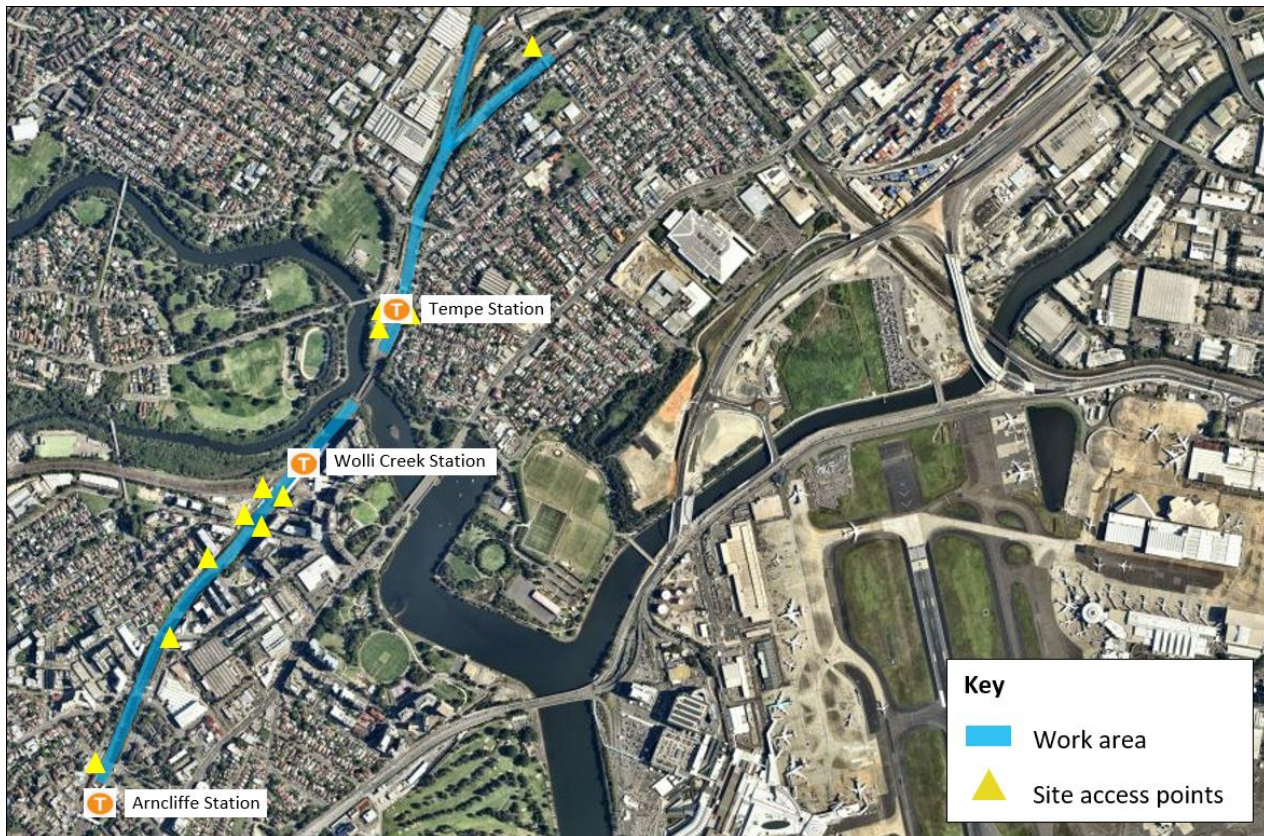
- an increase in workers and vehicles
- noise from machinery and equipment
- lighting from temporary lighting towers.

We understand construction activities may cause disruption for the community. We will seek to minimise impacts as much as possible and adhere to strict environmental conditions relating to noise, vibration and dust management.

We apologise for any inconvenience the work may cause and thank you for your patience.



Location of work



We are going paperless

We are committed to integrating sustainable practices and reducing environmental impacts.

Soon we will no longer be distributing paper notifications to residents unless requested. Instead, we will be providing construction updates digitally to your inbox.



To continue to receive information about this project, please scan the QR code to subscribe to email notifications.

If you wish to continue to receive paper notifications, you can request this via the QR code or by contacting us via the details below.

There's a lot happening

Currently there are multiple contractors working within the rail corridor.

For more information about the Wollri Creek Power Supply Upgrade Project, please visit www.transport.nsw.gov.au/projects/current-projects/wollri-creek-and-t8-airport-line-power-supply-upgrade or phone 1800 684 490.

For more information on work being completed by Sydney Trains, please phone 1300 656 999 or visit transport.nsw.gov.au/sydtraincommunity.

Contact us



Project Infoline **1800 684 490**
24-hour Construction Response Line
1800 775 465



projects@transport.nsw.gov.au



yoursay.transport.nsw.gov.au/mtms



Interpreter service

For languages other than English call 131 450
Arabic • Cantonese • Hindi • Mandarin • Vietnamese
لطلب خدمة الترجمة الشفهية للغات غير الإنجليزية اتصل بالرقم
131 450

獲取英語以外的其他語言傳譯協助服務可以致電**131 450**
अंग्रेज़ी के अतिरिक्त अन्य भाषाओं के लिए दुभाषिया सेवा **131 450**
पर कॉल करें

获取英语以外的其他语言口译协助服务可以致电**131 450**

Để có dịch vụ thông ngôn cho các ngôn ngữ khác tiếng Anh,
gọi số **131 450**