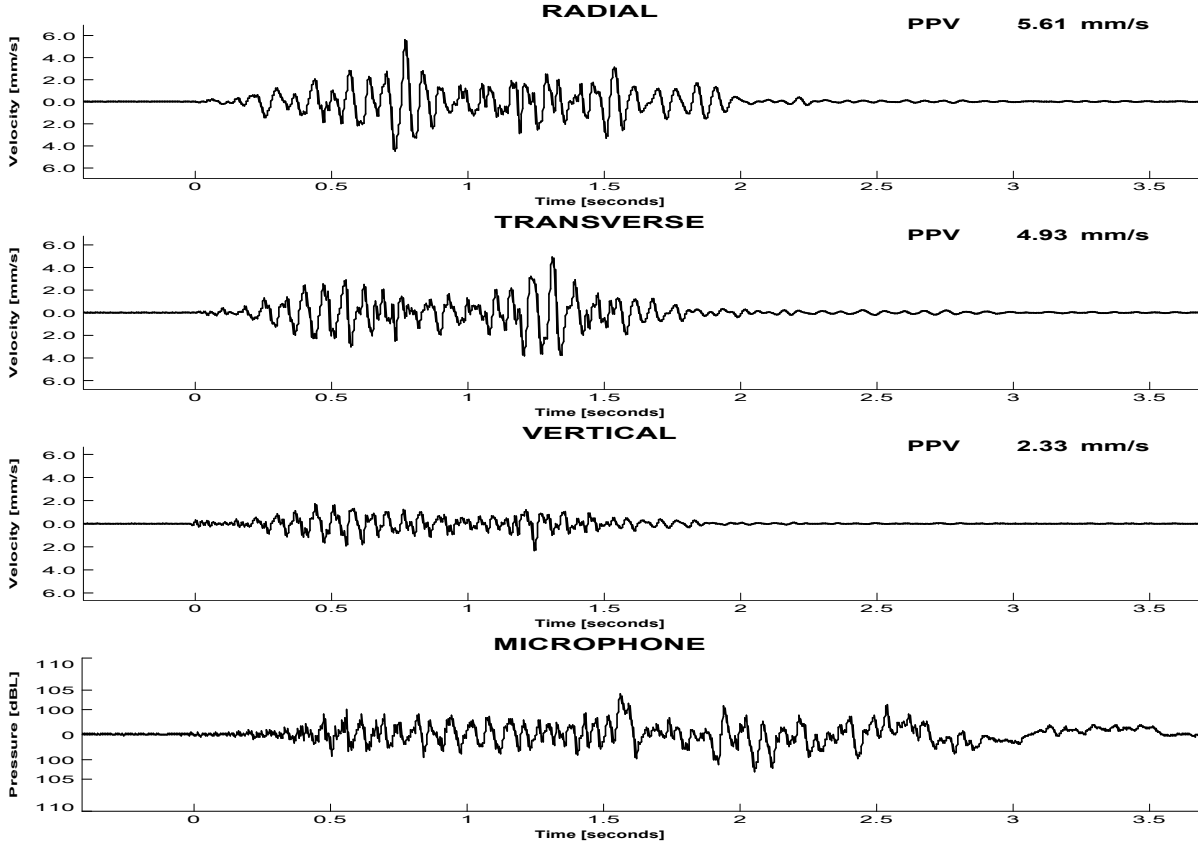


Bombo Quarry

Location: **Stn 'K'**
 Triggered by : **Vertical**

Date: **2024-04-02**
 Time: **12:23:06**

Triggers Set : Vector Sum: 0.29mm/s, Channels 1-3: 0.28mm/s



RESULTS

Peak Vector Sum Velocity : **5.63 mm/s** at 0.770 s
 Peak Overpressure : **104.2 dBL** at 1.560 s

	Peak [mm/s]	Frequency (ZC at Peak) [Hz]	Time (Rel. to Trigger) [s]	Acceleration (Est. from PPV) [mm/s ²]	Displacement (Est. from PPV) [mm]
Radial	5.61	15.4	0.770	369	91.1
Transverse	4.93	16.7	1.310	340	73.7
Vertical	2.33	22.2	1.244	238	26.3

Monitoring conducted by:
 (Your Company Name:Your Name)

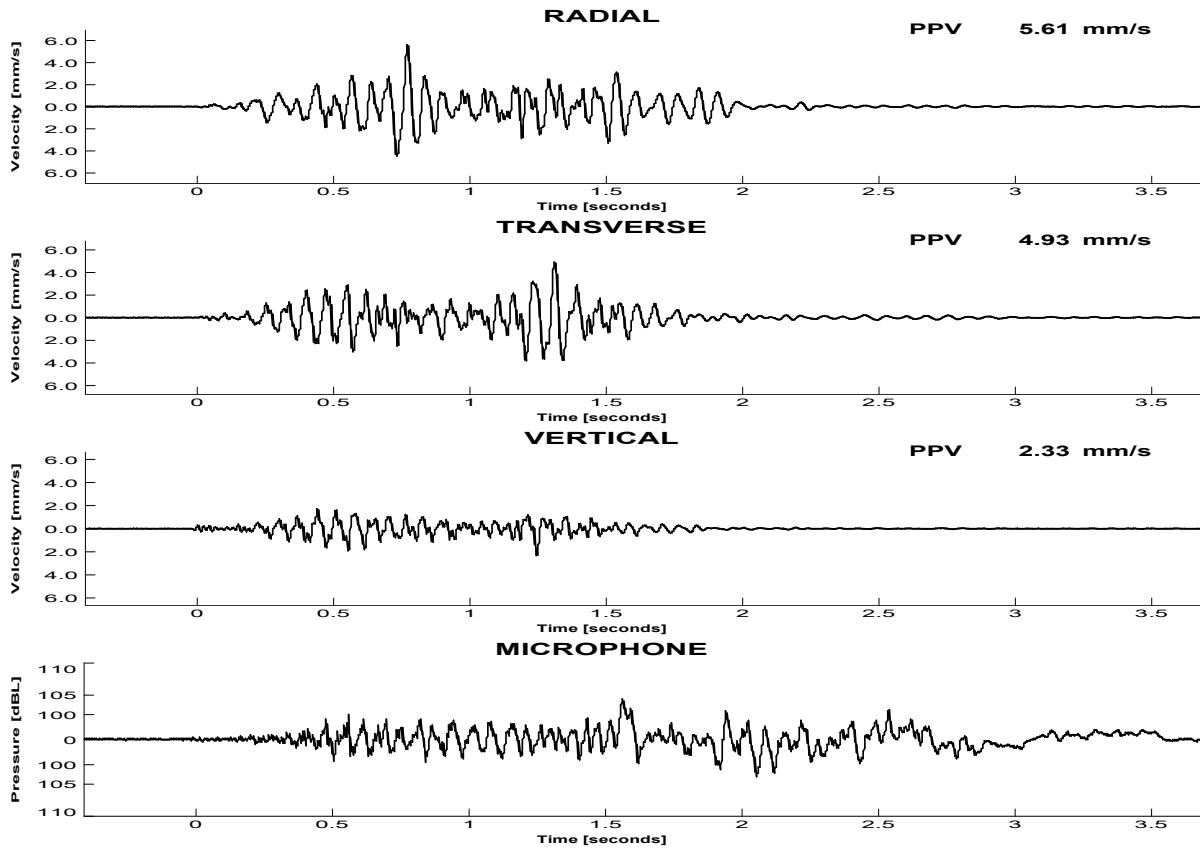
TM Serial Number : **4422** Last Calibration: **2023-05-24**

Bombo Quarry

Location: Stn 'K'
Triggered by : Vertical

Date: 2024-04-02
Time: 12:23:06

Triggers Set : Vector Sum: 0.29mm/s, Channels 1-3: 0.28mm/s



RESULTS

Peak Vector Sum Velocity : 5.63 mm/s at 0.770 s
Peak Overpressure : 104.2 dB at 1.560 s

	Peak [mm/s]	Frequency (ZC at Peak) [Hz]	Time (Rel. to Trigger) [s]	Acceleration (Est. from PPV) [mm/s ²]	Displacement (Est. from PPV) [mm]
Radial	5.61	15.4	0.770	369	91.1
Transverse	4.93	16.7	1.310	340	73.7
Vertical	2.33	22.2	1.244	238	26.3

Monitoring conducted by:
(Your Company Name:Your Name)

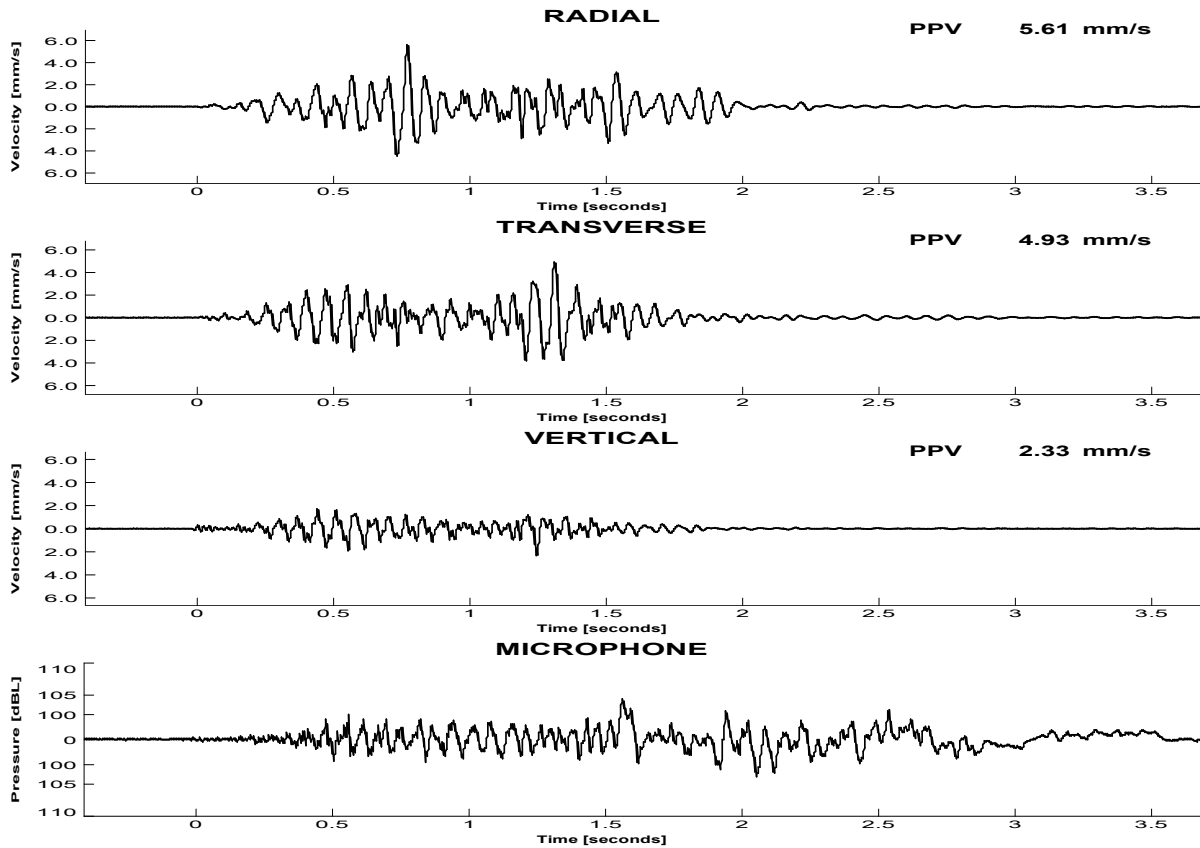
TM Serial Number : 4422 Last Calibration: 2023-05-24

Bombo Quarry

Location: Stn 'K'
Triggered by : Vertical

Date: 2024-04-02
Time: 12:23:06

Triggers Set : Vector Sum: 0.29mm/s, Channels 1-3: 0.28mm/s



RESULTS

Peak Vector Sum Velocity : 5.63 mm/s at 0.770 s
Peak Overpressure : 104.2 dB at 1.560 s

	Peak [mm/s]	Frequency (ZC at Peak) [Hz]	Time (Rel. to Trigger) [s]	Acceleration (Est. from PPV) [mm/s ²]	Displacement (Est. from PPV) [mm]
Radial	5.61	15.4	0.770	369	91.1
Transverse	4.93	16.7	1.310	340	73.7
Vertical	2.33	22.2	1.244	238	26.3

Monitoring conducted by:
(Your Company Name:Your Name)

TM Serial Number : 4422 Last Calibration: 2023-05-24