

Captains Flat rail corridor Detailed Site Investigation

Land Management Program

September 2024



Transport for NSW acknowledges the Traditional Custodians of the lands on which we work and pays respect to Elders past and present.

We would like to inform you that Transport for NSW (Transport), will be conducting a Detailed Site Investigation (DSI) and survey work within the rail corridor in Captains Flat to confirm the extent of the contamination.

Works planned within the rail corridor

The following works are planned to take place within the rail corridor:

- Supplementary Detailed Site Investigation (DSI)
- Detailed site survey
- Underground services location
- Geotechnical works.

A Sampling and Analysis Quality Plan has been prepared for this work and is available on our [website](#).

When and where we'll be working

We'll be carrying out this important work from **Monday 16 September to Friday 20 September 2024**, weather permitting.

The works are expected to take place **between 7am and 5pm**. If the dates or work hours change, we will update you.

We have included a map of the work area on the next page.

What will this mean for you?

Transport is committed to minimising the impacts of our work activities on the local community. You may notice workers in the rail corridor completing their inspections and sampling.

The work will include the use of an excavator and drilling equipment that will create some noise.

Why are we doing this work?

This work is required to provide additional information for the remediation program.

The Remediation Action Plan identified that an additional DSI was required as the future land use is changing to public open space to allow the land to be incorporated into the Captains Flat Heritage Trail. The testing will focus on several areas including the Copper Creek embankment and area surrounding the SES facility.

This will help inform the detailed design for the remediation and make sure the area is suitable for its intended use.

Next steps for the rail corridor

Following the DSI works, our next steps for the Captains Flat rail corridor are to update the Remediation Action Plan and complete the following:

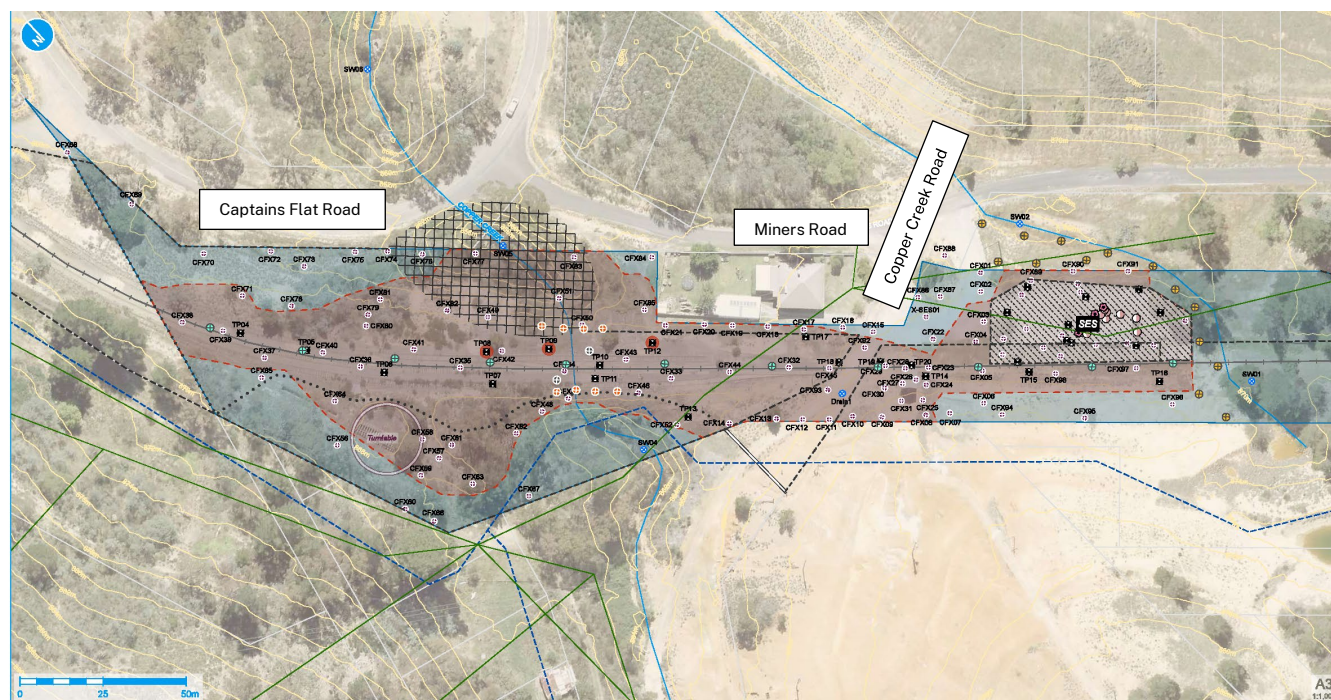
- Detailed Site Survey report
- Geotechnical investigation report
- Review of Environmental Factors
- Biodiversity Management Plan.

Transport will keep you informed as our work progresses.

Do you have any questions?

If you require any other information or would like to discuss this matter, please contact us at landassessment@transport.nsw.gov.au.

Location of work area



LEGEND

 Work area

Contact us



Project Infoline **1800 491 566**



landassessment@transport.nsw.gov.au



www.transport.nsw.gov.au/projects/current-projects/captains-flat-contamination



18 Lee Street, Chippendale NSW 2008
PO Box K659, Haymarket NSW 1240



Interpreter service

For languages other than English call 131 450
Arabic • Greek • Hindi • Mandarin • Vietnamese

لطلب خدمة الترجمة الشفهية للغات غير الإنجليزية اتصل
بالرقم **131 450**

Για υπηρεσίες διερμηνείας σε άλλες γλώσσες εκτός από
τα Αγγλικά καλέστε το **131 450**

अंग्रेज़ी के अतिरिक्त अन्य भाषाओं के लिए दुभाषिया सेवा
131 450 पर कॉल करें

获取英语以外的其他语言口译协助服务可以致电**131 450**

Để có dịch vụ thông ngôn cho các ngôn ngữ khác tiếng
Anh, gọi số **131 450**

www.transport.nsw.gov.au/privacy-statement#Your_Privacy



For the latest traffic updates:

Call 132 701, visit livetraffic.com or
download the app Live Traffic NSW