

# Elizabeth Drive Upgrade

## Community update

November 2024



Australian Government

**BUILDING AUSTRALIA**



Section of Elizabeth Drive at Clifton Avenue intersection, looking west

Transport for NSW is progressing the upgrade of Elizabeth Drive to improve safety and support growth and connectivity within the Western Sydney Airport precincts.

Elizabeth Drive is a key east-west corridor in Western Sydney. It will provide direct access to the Western Sydney Airport Precincts and future employment area within the precincts, and connect to north-south corridors that are enabling growth of nearby areas.

Elizabeth Drives' importance to the future Western Sydney Airport precincts has been recognised by a joint \$800 million Federal and State Government commitment to upgrading this corridor in the coming years.

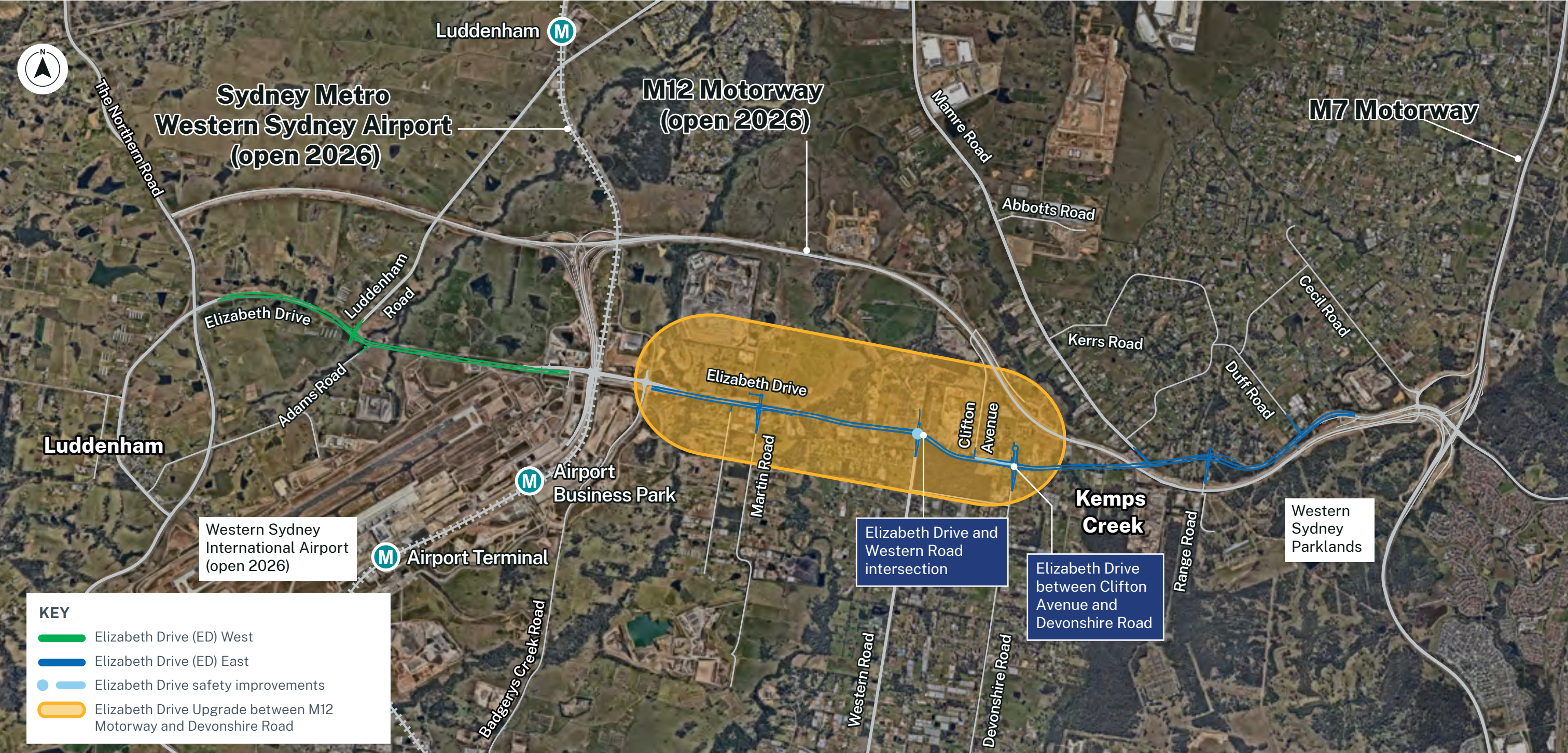
Using this funding commitment, Transport's improvement plan for Elizabeth Drive, includes:

- upgrading the road between M12 Motorway and Devonshire Road to four-lane road, with a provision for the addition of two lanes in the future
- interim safety improvements at two key Elizabeth Drive locations to be delivered in early 2025:
  - Western Road intersection
  - between Clifton Avenue and Devonshire Road

Transport has now finalised the Review of Environmental Factors for the Elizabeth Drive East and West upgrades, giving the project environmental approval to proceed.

Transport for NSW acknowledges the Dharug people as the Traditional Custodians of the lands on which we work and pays respect to Elders past and present.





Elizabeth Drive upgrade –  
M12 Motorway to Devonshire Road

With the committed funding available, Transport has identified that the section of Elizabeth Drive between M12 Motorway connection at Badgerys Creek and Devonshire Road at Kemps Creek will be prioritised for delivery.

The upgrade through this area will include:

- upgrading the existing two-lane road to a four-lane road with a central median to allow for future widening to six lanes

- new traffic light intersections at Devonshire, Western and Martin roads
- new twin bridges over South Creek and Badgerys Creek
- pedestrian/bicycle user separated paths on each side of the road
- upgraded utilities along the corridor
- improved landscaping, signs and lighting.

We are prioritising this section for upgrade as this is where the heaviest traffic volumes are along the corridor. This area has businesses and recreational facilities with consistent pedestrian activity as well as several side road intersections with vehicles entering and leaving the corridor regularly. The Devonshire Road intersection, which recently received a temporary roundabout to improve safety and traffic flow, is a particular area that will benefit from the full upgrade.

The upgrade will:

- increase the road capacity to meet future growth and development
- enhance traffic safety and reduce congestion, creating safer more reliable journeys to the western Sydney International Airport and surrounding areas
- improve safety for all road users including motorists, bicycle users and pedestrians
- provide facilities for public transport such as bus stops and queueing priority at traffic lights.



# Environmental approval – Review of Environmental Factors finalised

We publicly displayed the Review of Environmental Factors (REF) for community and stakeholder feedback between 21 September and 31 October 2023.

Thank you to everyone who provided feedback during the consultation.

The key issues raised during consultation were about:

- proposal design and construction
- property acquisition
- socio-economic impacts
- consultation process.

We have prepared a detailed Submissions Report which summarises comments and questions received during the public display and our responses. You can access this report online at [nswroads.work/elizabethdrive](https://nswroads.work/elizabethdrive)

If you made a submission, you will receive an email or letter advising of where your submission has been addressed in the report.

## Changes to the proposal

Following the public display and feedback received we have reviewed and revised the proposal design. These changes include:

- doing detailed review of the proposal design between the intersections of Clifton Avenue and Salisbury Avenue/Devonshire Road
- reviewing opportunities to minimise impacts to businesses/recreational facilities and schools during next stage of design development
- further refining the design around creeks to minimise potential flooding impacts
- site investigations (topographical survey, utilities and geotechnical) will be carried out during the next phase of design development.

# Safety improvements on Elizabeth Drive at Kemps Creek

While we continue development work for the full upgrade between M12 Motorway and Devonshire Road, we will make some improvements at some key busy areas to improve safety and reduce congestion. The safety work has been divided into two sections (as shown in the map):

## Elizabeth Drive and Western Road intersection

We will widen Elizabeth Drive to create a right turn lane and safe waiting space for vehicles turning right into Western Road.

This minor work will help reduce accidents and near misses and create safer opportunities for vehicles moving in and out of Western Road.

## Elizabeth Drive between Clifton Avenue and Devonshire Road

To improve safety in this high traffic area around Kemps Creek, we will install:

- a shared median turning lane to assist with right-turn access to local businesses on Elizabeth Drive between Clifton Avenue and Devonshire Road
- “no stopping” along the westbound side to reduce the need for pedestrians to cross Elizabeth Drive in an unsafe manner
- a pedestrian median at the Bill Anderson Reserve parking area to help pedestrians cross safely in an appropriate location.

Work on these safety improvements is expected to start in late 2024. We will keep the community informed about upcoming activities and any potential impacts and changes.



Artist’s impression of the proposed Elizabeth Drive upgrade





Elizabeth Drive looking west towards Western Sydney Airport



Elizabeth Drive looking west (Ampol Service Station on the right, Kemps Creek United Soccer Club on the left)



## Western Sydney International Airport Precinct Roads Network

The Western Sydney International Airport Precinct Roads Network is a proposed development program of seven road corridors in the Western Sydney International Airport Precinct.

The corridors will support traffic movement including public transport and freight, and will provide connections to the Western Sydney Parklands and other projects.

During September and October 2023, Transport has publicly displayed the Review of Environmental Factors of Elizabeth Drive Upgrade project, and consulted with the community and other stakeholders. We wanted to know their views on the corridor routes, road design and usage. The consultation report is now available at [www.transport.nsw.gov.au/projects/current-projects/western-sydney-international-airport-precinct-road-network](http://www.transport.nsw.gov.au/projects/current-projects/western-sydney-international-airport-precinct-road-network).

### Current site works

We are carrying out site investigation, safety and maintenance work along Elizabeth Drive between Badgerys Creek Road and Duff Road. The site investigations will further inform the design of Elizabeth Drive upgrade and involve:

- topographic survey
- utility survey
- collecting samples of soil for testing.

### Impacted landowners

We have contacted landowners potentially impacted by property acquisition on Elizabeth Drive East and Elizabeth Drive West upgrade projects during the display of the Review of Environmental Factors.

A Personal Relationship Manager or other Transport representative will continue to be in contact with affected landowners in the priority section to discuss property impacts and provide updates as the project progresses. Information about the property acquisition process is available at [www.propertyacquisition.nsw.gov.au](http://www.propertyacquisition.nsw.gov.au)

### Next steps

We will now progress with the design development and any further environmental considerations.

We will continue to consult with the community and stakeholders prior to and during the design and construction phase.

### Contact us



Project Infoline **1800 865 303 (toll free)**



[elizabethdrive@transport.nsw.gov.au](mailto:elizabethdrive@transport.nsw.gov.au)



[nswroads.work/elizabethdrive](http://nswroads.work/elizabethdrive)

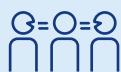


PO Box 973, Parramatta NSW 2124



**For the latest traffic updates:**

Call 132 701, visit [livetraffic.com](http://livetraffic.com) or download the app Live Traffic NSW



### Interpreter service

For languages other than English call **131 450**  
Arabic • Greek • Hindi • Mandarin • Vietnamese

لطلب خدمة الترجمة الشفهية للغات غير الإنجليزية اتصل  
بالرقم **131 450**

Για υπηρεσίες διερμηνείας σε άλλες γλώσσες εκτός από  
τα Αγγλικά καλέστε το **131 450**

अंग्रेजी के अतिरिक्त अन्य भाषाओं के लिए दुभाषिया सेवा  
**131 450** पर कॉल करें

获取英语以外的其他语言口译协助服务可以致电**131 450**

Để có dịch vụ thông ngôn cho các ngôn ngữ khác tiếng  
Anh, gọi số **131 450**