

# Greenwich Point Wharf Upgrade

## Night work for installation of pontoon/pivot piles, gangway and floating pontoon

August 2024



Transport for NSW acknowledges the Cammeraygal people as the Traditional Custodians of the lands on which we work and pays respect to Elders past and present.

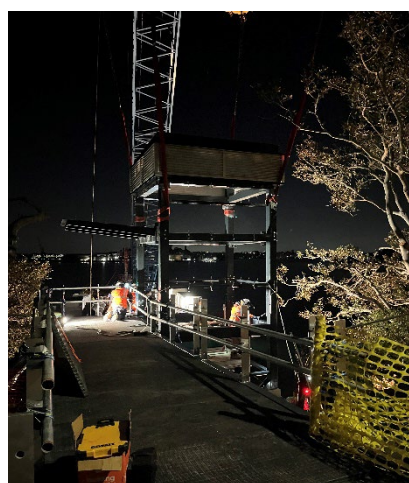
Greenwich Point Wharf is being upgraded as part of the Safe Accessible Transport program to make public transport safe, inclusive and easy to use for all passengers, especially people with disability, older people, people with prams or luggage and people with limited mobility.

### New dates for piling night work

In July 2024 we notified the community about night work required to install new pivot piles for the pontoon, which was scheduled between Sunday 4 August and Thursday 22 August. However, the work was postponed due to poor weather conditions. This work is now expected to commence from **Sunday 25 August**, weather and maritime conditions permitting.

### New lift installation has commenced

Major construction is progressing well at the wharf. Both the steel and glass lift shafts were successfully installed in July and August. Around 30 clear glass panels were used for the new lift structure, which allows natural sunlight to enter. Work will continue around the lift and the wharf. We thank the community for their patience and positive feedback.



View of the lift shaft being installed at night



View of the new glass for the lift being installed



## Upcoming night work

We will be carrying out the final installation of the remaining pontoon/pivot piles and installing the gangway and floating pontoon for the new wharf.

For safety and accuracy, this work is needs to be carried out at night when the sea conditions are calmer and there is less marine traffic.

## When we'll be working

The installation of the piles, gangway and floating pontoon is expected to take place over up to **16 night shifts** between **Sunday 25 August 2024** and **Thursday 19 September 2024** from **10pm** and **5am**, weather and maritime conditions permitting.

For all other construction activities, work will continue to take place during standard work hours from **7am to 5pm**.

## What the work involves

Transportation and installation of the piles, gangway and floating pontoon will be carried out by a crane from a floating barge. Work includes barge lifting and pile screwing.

Equipment used includes a barge crane, tugboat, piling leader, a work punt, temporary lighting and hand tools. Pedestrian and vehicle access will be maintained via Lower Serpentine Road.

## Managing our impacts

Some of our work may be noisy at times. The noisiest work will take place from **Sunday to Thursday nights** to give residents some respite over the weekend.

To reduce noise impacts, if pile hammering work is required, it will be carried out during standard work hours.

We will be turning off equipment when not in use and placing equipment and lights as far away from residents as possible.

## Are you studying for the Higher School Certificate?

If a member of your household is studying for the Higher School Certificate (HSC) please contact us as soon as possible. We will make every effort to limit disruption to HSC students during the exam period.

Thank you for your cooperation while we carry out this important work.

## Stay up to date

Project Infoline: **1800 684 490** or

24-hour Construction Response Line **1800 775 465**

Email: [projects@transport.nsw.gov.au](mailto:projects@transport.nsw.gov.au)

Website: [transport.nsw.gov.au/greenwichwharf](https://transport.nsw.gov.au/greenwichwharf)

