

Pacific Highway improvements at Hexham (Hexham Straight Widening)

Project update – June to August 2024

June 2024



Transport for NSW acknowledges the Awabakal people of the Awabakal Nation as the Traditional Custodians of the lands on which we work and pays respect to Elders past and present.

The Australian and NSW Governments are investing in the upgrade of the section of Maitland Road, known as Hexham Straight, between the Newcastle Inner City Bypass and Hexham Bridge. This will improve safety and traffic flow for the 50,000 motorists who use this road every day.

Transport for NSW has formed an Alliance with Georgiou, Daracon and SMEC to design and build the project. Major construction has begun, and the project is expected to be open to traffic in 2026.

What we've been doing

Works underway or completed over the past three months:

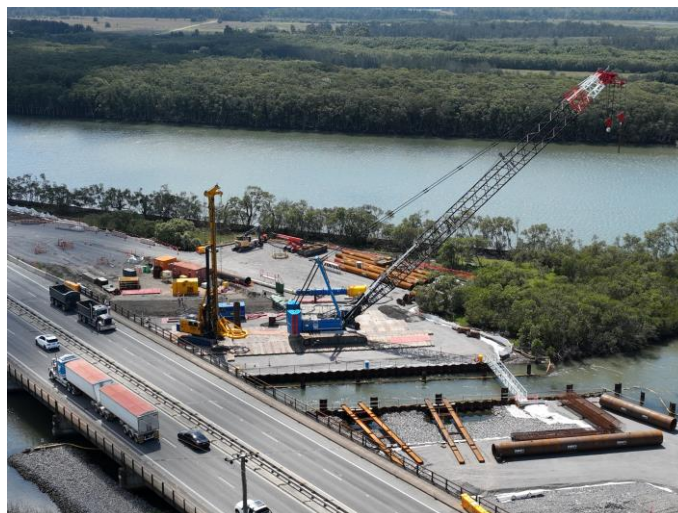
- Piling for the new southbridge bridge over Ironbark Creek
- Median and shoulder widening on Maitland Road between Shamrock Street and the Oak Precinct
- U-turn bay upgrades opposite Hexham Bowling Club, Shamrock Street and Sparke Street
- Clearing vegetation for the widening
- Road slab repairs on Maitland Road between Hexham Train Station and the Oak Factory at Hexham.

What's happening

In the next three months work activities will include:

- Ongoing bridge work including work on the abutments and headstocks
- Relocation of utility services, including water, electrical, telecommunications and work on the traffic control signals
- Bus stop relocations

- Ongoing work in the median and shoulder widening on Maitland Road between the Newcastle Inner City Bypass and the Oak Precinct.



Piling for the Ironbark Creek bridge

When and where we'll be working

The work will occur along the length of the project from the Newcastle Inner City Bypass to the Oak Precinct.

Day work will be carried out **Monday to Friday** between **7am and 6pm** and **Saturday** from **8am to 1pm**.

Night work will be carried out from **Sunday to Thursday** between **6pm and 7am**.

Work will not be carried out on public holidays from the night of **Friday 7 June**. Work will resume on **Tuesday 11 June**.



What will this mean for you?

During night work there may be temporary lane closures. During lane closures, intermittent stop/slow traffic control and a reduced speed limit of 40km/h will be in place in the work zones.

A temporary 60km/h reduced speed limit will remain in place through the work zone for the safety of motorists and workers.

Managing our impacts

There will be machinery and other plant and equipment working in different areas throughout the project. The machinery and equipment generate light, noise and vibration.

We will make every effort to minimise these impacts by:

- Monitoring noise to manage any potential impacts and adjust our work, where possible
- Keeping residents informed about night work near their property
- Turning off machinery and vehicles when not in use
- Using non-tonal reversing alarms, where possible
- Adjusting the positioning of machines and directing temporary lighting down and away from homes during night work.



Road widening near Ironbark Creek



Road widening near Ash Island

Contact us



Project Infoline 1800 515 141

If you would like to provide feedback, or have any questions or complaints, please contact our 24-hour Construction Response Line



hsw.community@hswalliance.com.au



nswroads.work/hexham



Interpreter service

For languages other than English call 131 450



For the latest traffic updates:

Call 132 701, visit livetraffic.com or download the app Live Traffic NSW

www.transport.nsw.gov.au/privacy-statement#Your_Privacy