

Rail Service Improvement Program

Homebush to Strathfield Signalling Upgrade

October to December 2024



Transport for NSW acknowledges the Wangal people of the Dharug Nation as the Traditional Custodians of the lands on which we work and pays respect to Elders past and present.

The Rail Service Improvement Program, formerly known as More Trains, More Services enables a safer, more equitable, and integrated transport network where people can travel more safely, reliably, and efficiently across NSW.

What work are we doing?

In the next few months, we will be:

- removing and installing new overhead wiring infrastructure
- altering signalling infrastructure within the rail corridor
- painting existing overhead wiring infrastructure within Strathfield Station
- installing track joints.

When and where we'll be working

Work will take place on the platform at Strathfield Station and on track between Homebush and Strathfield.

Temporary site compounds will be established in:

- Parnell Street council car park, Strathfield
- Sydney Trains car park off Albert Road, adjacent to Strathfield Station.

Standard construction hours on this project are between **7am and 6pm Monday to Friday and 8am and 1pm on Saturdays.**

Out of hours work

Some work is required to take place outside of standard construction hours, including oversize deliveries to site.

This work will take place between:

- **6pm Thursday 10 October and 6am Monday 14 October**
- **6pm Thursday 24 October and 7am Monday 28 October**
- **6pm Thursday 31 October and 7am Monday 4 November**
- **6pm Thursday 28 November and 7am Monday 2 December 2024.**

Why we work outside of construction hours

We schedule work outside of standard construction hours to take place during Sydney Trains trackwork periods when no trains are running, minimising disruptions to commuter services and improving the safety of our construction team and customers.

Temporary parking removal and traffic changes

To enable safe access into the rail corridor, parking for construction vehicles and machinery and temporary site compound set-ups, some parking removal will be required, including:

- reservation of the council car park and up to 17 roadside car spaces on Parnell Street between:
 - **7am Wednesday 23 October and 6pm Monday 28 October 2024**
 - **7am Wednesday 27 November and 6pm Monday 2 December 2024.**
- intermittent traffic stoppages on Cooper Street in Homebush to enable construction vehicles to safely access the rail corridor.



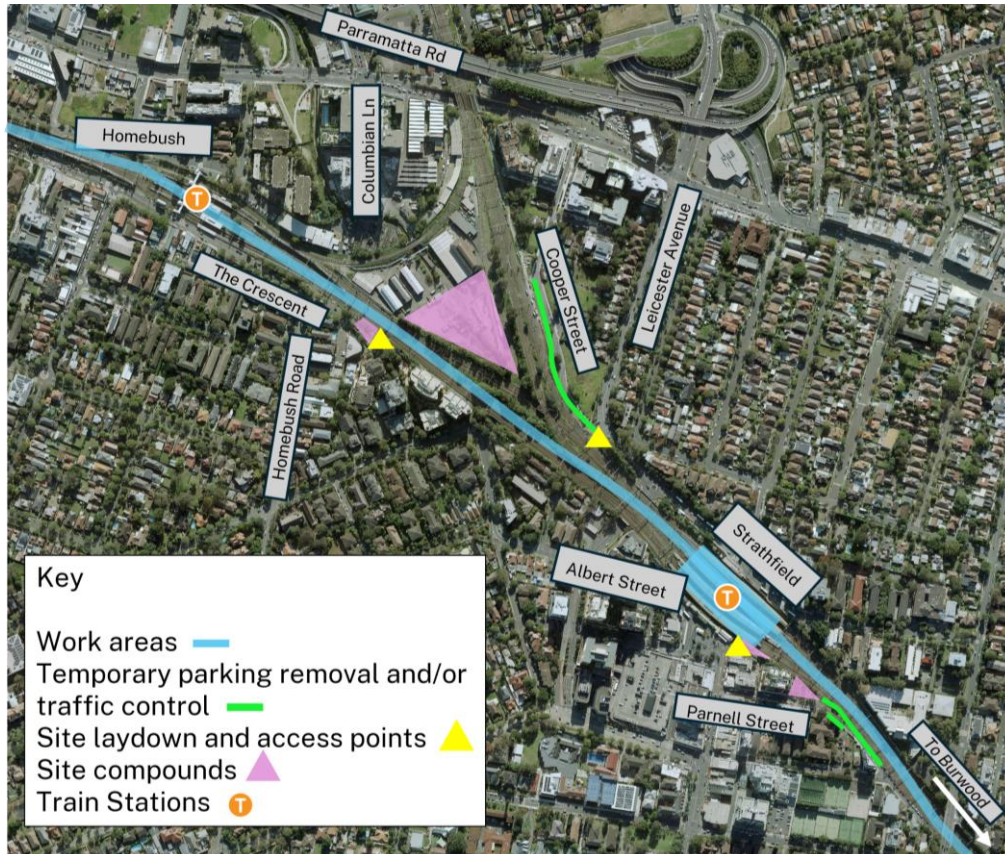
Traffic control and signage will be in place to assist with these changes.

What will this mean for you?

You may notice an increase in workers and construction vehicles, elevated working platforms, and noise from equipment including hand tools.

Locations of work area

Please note these maps are indicative only and not to scale.



Managing our impacts

We understand construction activities may cause disruption to our closest neighbours, and every effort will be made to minimise impacts where possible.

Contact us



Project Infoline **1800 684 490**
24-hour Construction Response Line
1800 775 465



projects@transport.nsw.gov.au



www.transport.nsw.gov.au/mtms



7 Harvest Street
Macquarie Park, NSW 2200



Visit the online portal go to
caportal.com.au/tfnsw/mtms



Interpreter service

For languages other than English call 131 450
Arabic • Greek • Hindi • Mandarin • Vietnamese

لطلب خدمة الترجمة الشفهية للغات غير الإنجليزية اتصل
بالرقم **131 450**

Για υπηρεσίες διερμηνείας σε άλλες γλώσσες εκτός από
τα Αγγλικά καλέστε το **131 450**

अंग्रेजी के अतिरिक्त अन्य भाषाओं के लिए दुभाषिया सेवा
131 450 पर कॉल करें

获取英语以外的其他语言口译协助服务可以致电**131 450**

Để có dịch vụ thông ngôn cho các ngôn ngữ khác tiếng
Anh, gọi số **131 450**

www.transport.nsw.gov.au/privacy-statement#Your_Privacy



For the latest traffic updates:

Call 132 701, visit livetraffic.com or
download the app Live Traffic NSW