

Jervis Bay Road Intersection upgrade

Princes Highway Upgrade Program

Construction Update

May 2024



Transport for NSW acknowledges the Traditional Custodians of the lands on which we work and pays respect to Elders past and present.

The Australian and NSW governments are delivering an upgrade to the Princes Highway and Jervis Bay Road intersection at Falls Creek.

What work are we doing?

During May, work will continue within the project area including:

- completing vegetation clearing
- installing/relocating safety barriers and signage
- utility, geotechnical and survey investigations
- removing existing fencing and installing new boundary fencing
- relocating existing utilities, including water, electrical and telecommunications
- building temporary pavement including a local driveway access road from the Princes Highway and u-turn bay that can be used by the public
- importing material for the construction of embankments and other earthworks activities
- drainage works
- establishing the main site compound.

When we'll be working

Work will be carried out during the day and up to 10 night shifts from **Wednesday 1 May to Friday 31 May 2024**.

Standard day work hours are Monday to Friday between 7am and 6pm and on Saturdays between 8am and 1pm.

Night work hours will be between 6pm and 7am.

All work is subject to weather conditions.

We will keep the community informed of any changes.

Temporary traffic changes

During the work hours there will be some temporary traffic changes to ensure the work area is safe. Lane/shoulder closures and reduced speed limits of 40 km/h may be in place on the Princes Highway and Jervis Bay Road.

During night shift utility relocation work on the Princes Highway and Jervis Bay Road, there will be periods where one lane will be closed and vehicles will be directed under traffic control.

Installation and relocation of safety barriers will be staged and move quickly along the alignment, reducing the time spent in each area. Driveway access will not be impacted by barrier activities.

Motorists are advised to drive to conditions and follow the directions of signs and traffic control. During night work, motorists should allow an extra five minutes' travel time.

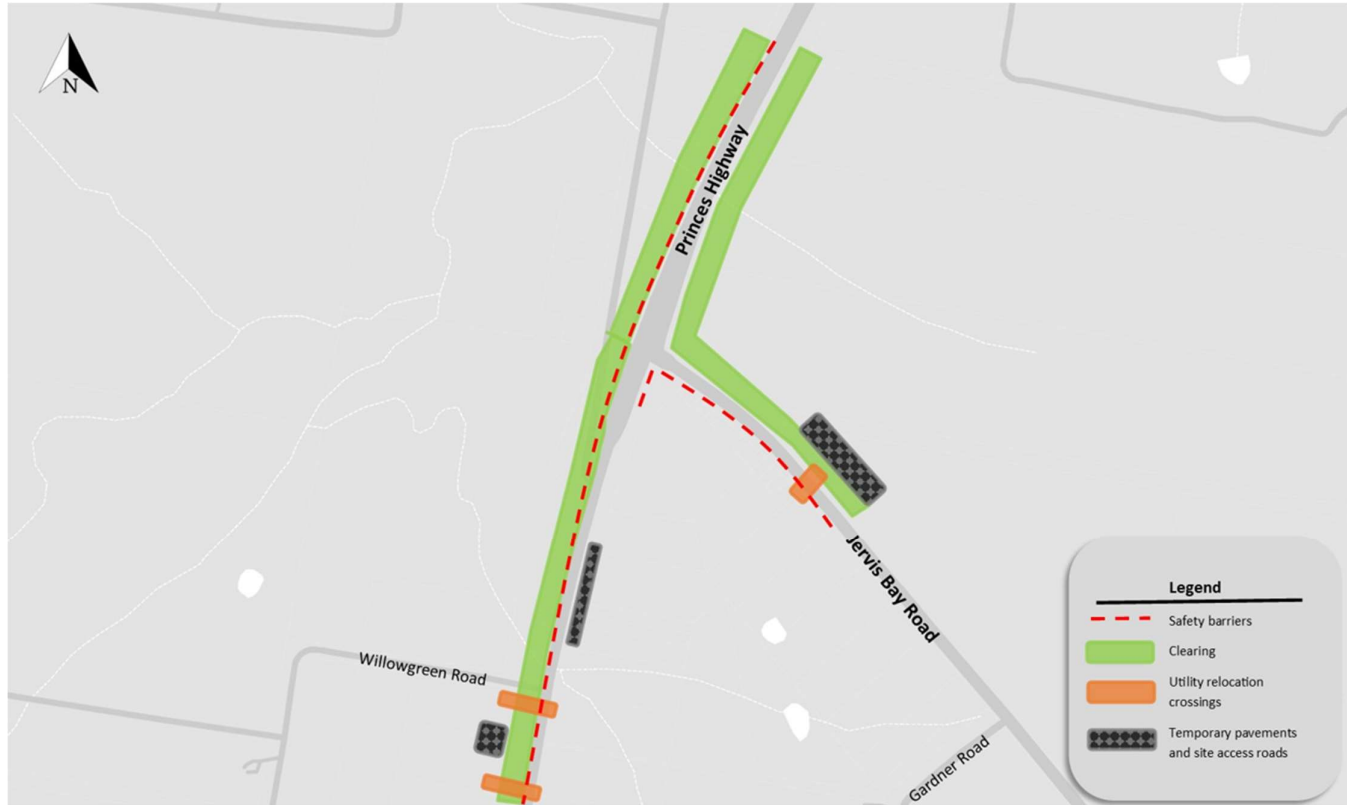


What will this mean for you?

Some activities need to be carried out at night to minimise traffic disruptions and reduce safety risks to our workers and road users. We will not work more than two consecutive nights in the same area.

Our work may be noisy at times, however we will do everything we can to minimise these impacts including using non-tonal reversing beepers on equipment, turning machinery off when not in use and carrying out noisier works early during the night shift.

Location of work area



Contact us

For questions and enquiries please use the contact details below. The project does not have a community display centre, however we are happy to arrange face-to-face meetings on request.



Project Infoline **1800 570 562**



JBRcommunity@srgglobal.com.au



Visit the online portal go to **nswroads.work/jervisbayroad**



For the latest traffic updates:
Call 132 701, visit livetraffic.com or download the app Live Traffic NSW



Interpreter service

For languages other than English call 131 450
Arabic • Greek • Hindi • Mandarin • Vietnamese

لطلب خدمة الترجمة الشفهية للغات غير الإنجليزية اتصل
بالرقم **131 450**

Για υπηρεσίες διερμηνείας σε άλλες γλώσσες εκτός από
τα Αγγλικά καλέστε το **131 450**

अंग्रेज़ी के अतिरिक्त अन्य भाषाओं के लिए दुभाषिया सेवा
131 450 पर कॉल करें

获取英语以外的其他语言口译协助服务可以致电**131 450**

Đề có dịch vụ thông ngôn cho các ngôn ngữ khác tiếng
Anh, gọi số **131 450**

www.transport.nsw.gov.au/privacy-statement#Your_Privacy