

# Kamay Ferry Wharves

## Community update

December 2024



Transport for NSW acknowledges the Gweagal and Bidjigal people as the Traditional Custodians of the lands on which we work and pays respect to Elders past and present.

The NSW Government is replacing the previous ferry wharves at La Perouse and Kurnell as part of the Kamay Botany Bay National Park, Kurnell Master Plan.

### Wharves opening in early 2025

We are working hard to open the wharves as soon as we can.

We have experienced some construction challenges, including poor weather conditions, delays in the supply of construction materials, and finding bonded asbestos on the worksite.

We are working through these construction challenges and expect to open the wharves to the public in early 2025.

We thank the community for their patience while we complete these finishing works.

### Bonded asbestos and landscaping delays

Small pieces of bonded asbestos were found in the temporary fenced work area at La Perouse. This type of asbestos is low risk. The asbestos was in the soil, meaning it is pre-existing and was not brought onto the site.

This asbestos was removed as part of our Unexpected Contaminated Finds Procedure. The area will remain fenced off while we finish work in the area.

The administrative process of managing these asbestos finds has caused delays in finalising the landscaping and approvals to open.

More information on asbestos management can be found in our frequently asked questions on our project documents webpage.

### Snapshots of work completed to date

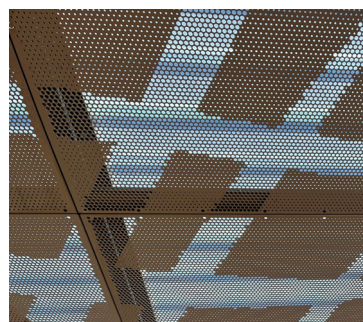
#### Vessel berthing areas

At both wharves, work is progressing on installation of the ground tactiles, which are the bumps on the flooring to help vision impaired users navigate the wharf structure.

#### Wharf shelters

The wharf shelter ceiling artwork has been installed at both sites.

We've also started to install the timber flooring, seating, and bins. The image below shows a glimpse of the shelter artwork and the bin recently installed at La Perouse.



#### Railings

We've completed installation of the stainless-steel railings at La Perouse and work is continuing at Kurnell. Installation of the LED lighting within the handrails has been completed at La Perouse and is progressing at Kurnell.

#### Temporary causeway removal

We've completed removal of the temporary causeway at La Perouse.

#### Monument track lights

New lights have been installed along the Monument Track.



## Construction progress at La Perouse (30 October 2024)



## Construction progress at Kurnell (30 October 2024)



## Wharf operation and ferry connections

We are continuing to develop operational plans including wharf use details, such as fishing. At this stage, there are no proposed restrictions to the number of people fishing from the Kamay Wharves once they open next year.

The Expression of Interest (EOI) for the operation of a ferry connection between La Perouse and Kurnell was open between 25 July and 6 September 2024. No formal expressions were received.

Transport will re-visit potential opportunities in the future and remain open to private sector interest.

## Upcoming work

Over the next few months, you will see:

- installation of lighting, wharf furniture and safety elements including signage, access ladders, life rings and safety railings
- sandblasting the Aboriginal artwork onto the decks
- testing and checks (called commissioning) of the new structures and equipment, including night time testing of lighting
- installation of new accessible parking spaces on Anzac Parade at La Perouse (near the front of the current construction site compound)
- removal of materials, equipment and site buildings as work activities are completed
- re-grassing areas within the construction zones.

All work activities and dates are subject to weather and site conditions.

## Holiday shutdown

Our work sites will be closed from **Saturday 21 December 2024 to Sunday 5 January 2025.**

**All land and water construction zones remain closed** to the public and will be closely monitored by security staff and cameras.

For any urgent enquiries during the shutdown contact 1800 718 556.

## Contact us



Project Infoline **1800 718 556**



**kamaywharves@mcdgroup.com**  
**kamayferrywharves@transport.nsw.gov.au**



**nswroads.work/kamayferrywharves**



Kamay Ferry Wharves Project,  
Transport for NSW, Community and Place  
PO Box K659, Haymarket NSW 1240



**Visit the project webpage**



### Interpreter service

For languages other than English call 131 450  
Mandarin • Greek • Cantonese • Spanish • French • Arabic

获取英语以外的其他语言口译协助服务可以致电 **131 450**

Για υπηρεσίες διερμηνείας σε άλλες γλώσσες εκτός από τα Αγγλικά καλέστε το **131 450**

獲取英語以外的其他語言傳譯協助服務可以致電 **131 450**

Servicio de intérpretes para personas cuyo idioma no es el inglés, por favor, llame al número **131 450**

Pour obtenir les services d'un(e) interprète pour les langues autres que l'anglais, appelez le **131 450**

لطلب خدمة الترجمة الشفهية للغات غير الإنجليزية اتصل

[www.transport.nsw.gov.au/privacy-statement#Your\\_Privacy](http://www.transport.nsw.gov.au/privacy-statement#Your_Privacy)