

Traffic counts at various locations between Lisarow and West Gosford from Monday 11 November 2024

November 2024



Transport for NSW acknowledges the Traditional Custodians of the lands on which we work and pays respect to Elders past and present.

The NSW Government is carrying out traffic survey investigations along Pacific Highway and Manns Road between Lisarow and West Gosford to inform future projects.

Transport for NSW have engaged contractors to carry out the work, which will provide Transport with a better understanding of current traffic, cyclist and pedestrian volumes and movements in the area.

What work are we doing?

Work will include installing tube traffic counters and cameras at multiple locations along and adjacent to the Pacific Highway and Manns Road corridor.

When and where we'll be working

From **Monday 11 November** from **7am to 6pm**, **Monday to Sunday**, weather permitting.

Some night work will be required for tube count devices to be installed, monitored and removed.

Night work will be carried out **between 7pm and 6am** and is expected to be **completed in six shifts over a three week period**, weather permitting.

We will let you know in advance if we need to do any work outside these times.

We have included a map to show the investigation area where the traffic counts will be carried out.

What will this mean for you?

The work will cause no disruption to your property.

You may notice workers in high vis clothing, using lighting to carry out the work.

Workers will park kerbside to install and remove traffic counting cameras on street poles and roadside furniture.

Tube counters will generate some noise - we are making every effort to minimise noise by completing the investigations in the shortest possible time frames.

Driveway access will be maintained at all times.

Traffic changes

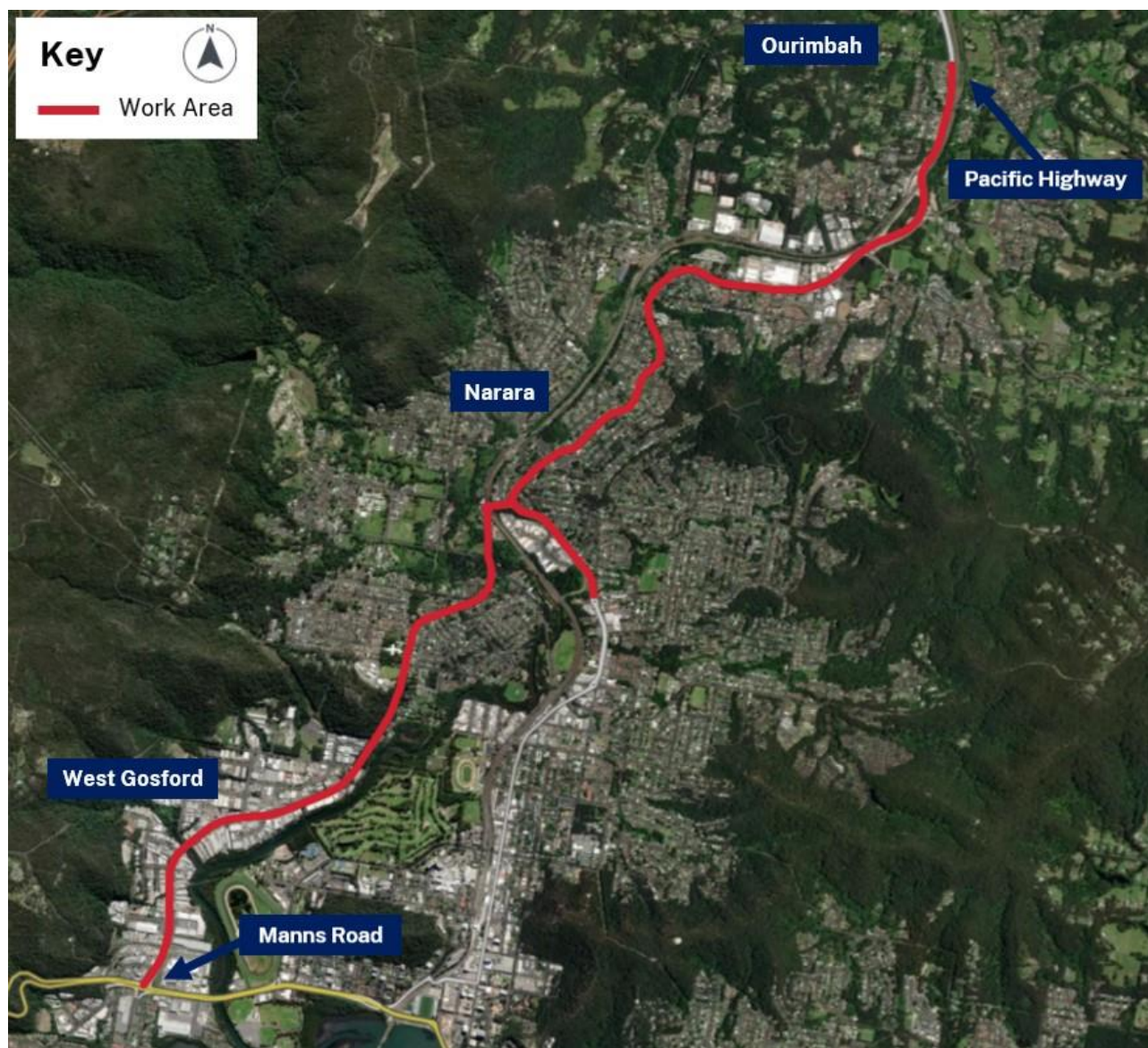
There will be some temporary traffic changes to ensure the work zone is safe.

Single lane and shoulder closures with traffic control and a 40km/h speed limit may be in place while equipment is installed at night.

Please keep to speed limits and follow the direction of traffic controllers and signs.

Thank you for your patience during this important work.

Location of work area



Contact us



Project Infoline **1800 241 573**



gosford.bypass@transport.nsw.gov.au



Interpreter service

For languages other than English call 131 450
Arabic • Greek • Hindi • Mandarin • Vietnamese

لطلب خدمة الترجمة الشفهية للغات غير الإنجليزية اتصل
بالرقم **131 450**

Για υπηρεσίες διερμηνείας σε άλλες γλώσσες εκτός από
τα Αγγλικά καλέστε το **131 450**

अंग्रेज़ी के अतिरिक्त अन्य भाषाओं के लिए दुभाषिया सेवा
131 450 पर कॉल करें

获取英语以外的其他语言口译协助服务可以致电**131 450**

Để có dịch vụ thông ngôn cho các ngôn ngữ khác tiếng
Anh, gọi số **131 450**

transport.nsw.gov.au/privacy-statement#Your_Privacy