



# Out of hours work in Kemps Creek and Cecil Park

## M12 Motorway – Central

May 2024



Australian Government



Transport for NSW acknowledges the Dharug Nation as the Traditional Custodians of the lands on which we work and pays respect to Elders past and present.

The Australian and NSW governments are building the M12 Motorway to provide direct access to the Western Sydney International Airport at Badgerys Creek and connect to Sydney's motorway network.

### What work are we doing?

Transport for NSW will continue night work over **23 nights** between **Wednesday 1 May** and **Friday 31 May 2024** along Elizabeth Drive, Clifton Avenue, Mamre Road, Range Road and Duff Road in Kemps Creek and Cecil Park.

During this period, we will:

- deliver earthworks material to the construction site via Elizabeth Drive, Mamre Road, Range Road, Cecil Park and Clifton Avenue Kemps Creek
- carry out bridge deck reinforcement, concreting activities and associated bridge work
- install bridge precast parapets and safety screens
- vegetation and tree removal
- deliver, use and remove oversized equipment as required
- repair, and install road pavement as required
- carry out stormwater drainage works, landscape maintenance and grass cutting
- switch on electric generators to warm-up the concrete batch plant at Clifton Avenue, Kemps Creek
- deliver aggregate and sand to the concrete batch plant

- saw-cut newly laid concrete pavement along the motorway to control cracking.

Our work needs to be carried out at night for the safety of our workers and road users and to minimise traffic disruption.

Across the project, low impact earthwork, pavement and bridge work activities will continue from **6am, Monday to Saturday**. Concrete pours for bridge and pavement work, may on occasion, need to start from **5am** or finish after **6pm, Monday to Saturday** as continuity and weather are critical to ensuring the concrete pours and cures are done correctly to prevent failure of the pavement.

The map overleaf shows the location of our work.

### Our work schedules

Our night work hours are between **6pm** and **7am**, from **Monday night** to **Saturday morning**. We will not work more than two nights in a row and three nights in a week, in the same location.

Normal work hours are between **7am** and **6pm, Monday to Saturdays**. There will be no work on public holidays.

### What equipment will be used?

During the work we may use excavators, compactors, graders, concrete pumps, concreting equipment, light and heavy vehicles, hand power tools, cranes, vacuum trucks, water carts, sweepers, milling machines, asphalt pavers, bobcats, elevated work platforms, mobile cranes and lighting towers.



## How will this work affect you?

During our work you may see increased activities in the area. The work may be noisy at times, but we will do everything we can to minimise its impact, including completing noisier activities earlier in the night before midnight, where possible, and turning off equipment and machinery when not in use.

## Report illegal dumping

We have observed numerous cases of illegal dumping at various locations in the Kemps Creek area. Illegal dumping is wrong and often dangerous. Penalties for illegal dumping can be up to \$15,000 and potential jail time for anyone caught.

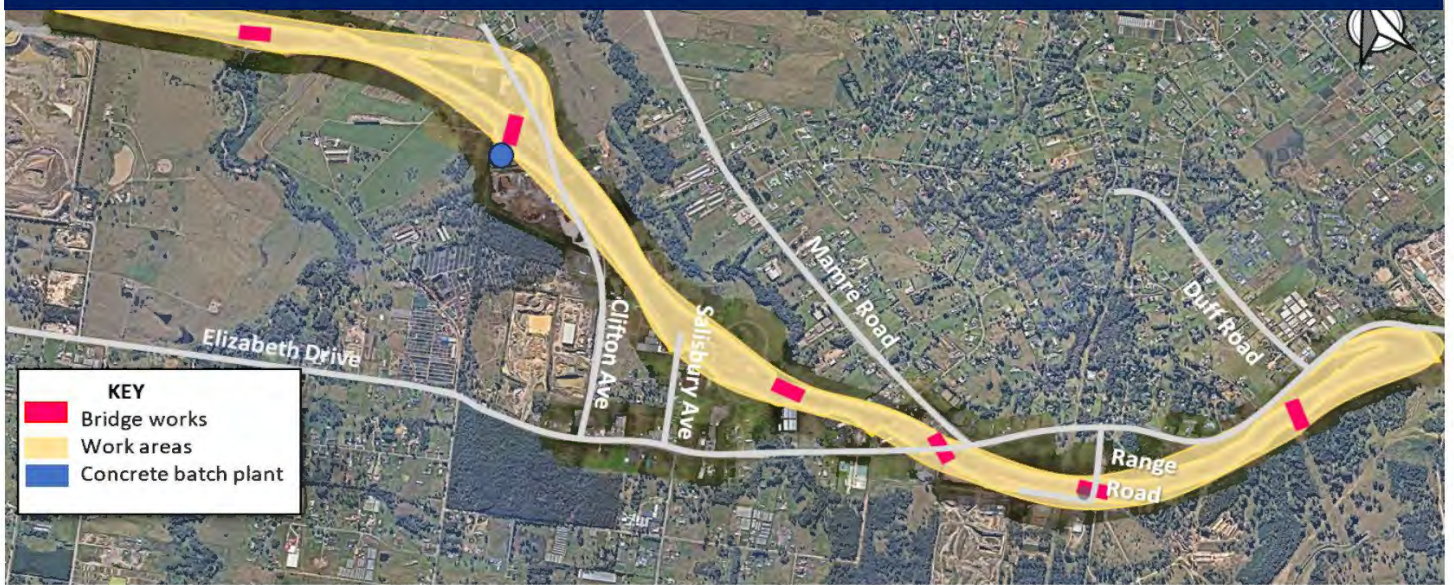
If the dumped waste is an immediate threat to human health or the environment, you need to call the EPA Environment Line on 131 555. Reports of illegal dumping can also be made to your local council.

## Traffic changes

There will be temporary traffic changes along the work zone during our work hours to ensure the work zone and traffic are safe while the equipment is used, delivered and removed.

Please keep to speed limits and follow the direction of traffic controllers and signs.

**Work zones – Elizabeth Drive, Clifton Avenue, Salisbury Avenue, Mamre Road, Range Road and Duff Road.**



## Contact us



Project Infoline and 24-hour Construction Response Line **1800 517 155**



**M12central@seymourwhyte.com.au**



**nswroads.work/m12**



PO Box 973  
Parramatta, NSW 2124



**Visit the online portal go to  
nswroads.work/m12**



**For the latest traffic updates:**  
Call 132 701, visit [livetraffic.com](http://livetraffic.com) or  
download  
the app Live Traffic NSW



### Interpreter service

For languages other than English call 131 450  
Arabic • Greek • Hindi • Mandarin • Vietnamese

لطلب خدمة الترجمة الشفهية للغات غير الإنجليزية اتصل  
بالرقم **131 450**

Για υπηρεσίες διερμηνείας σε άλλες γλώσσες εκτός από  
τα Αγγλικά καλέστε το **131 450**

अंग्रेजी के अतिरिक्त अन्य भाषाओं के लिए दुभाषिया सेवा  
**131 450** पर कॉल करें

获取英语以外的其他语言口译协助服务可以致电**131 450**

Để có dịch vụ thông ngôn cho các ngôn ngữ khác tiếng  
Anh, gọi số **131 450**

[www.transport.nsw.gov.au/privacy-statement#Your\\_Privacy](http://www.transport.nsw.gov.au/privacy-statement#Your_Privacy)