



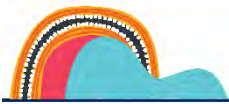
# Out of hours work for concrete saw cutting between Badgerys Creek and Cecil Park

## M12 Motorway – Central

January 2024



Australian Government



Transport for NSW acknowledges the Dharug people as the Traditional Custodians of the lands on which we work and pays respect to Elders past and present.

The Australian and NSW governments are building the M12 Motorway to provide direct access to the Western Sydney International Airport at Badgerys Creek and connect to Sydney's motorway network.

### What work are we doing?

We will pour the final layers of concrete road surfaces at various locations along the new motorway between Badgerys Creek and Cecil Park from **early-February 2024** until **late-2024**, weather permitting.

To make sure these concrete layers are durable, safe and effective, we need to cut the road surface with saws at the right times in the concreting process. Because of factors that affect concrete drying time like climate conditions, temperature and humidity, the right time to cut can vary between 12 and 18 hours after being poured.

Where possible, we carry out saw cutting during the day. However, a majority of our saw cutting must take place outside our standard work hours, during the evening and at night.

During this work, we will:

- saw cut the concrete surfaces in sections
- deliver, use and remove equipment as needed.

Saw cutting out of hours will help us complete concreting work efficiently, improve quality,

safety, reliability of the road network and help complete the project sooner for the community.

### Our work schedules

Saw cutting may occur from **6pm** depending on when the concrete has set to the right amount. We would plan to be finished by **7am** the following morning.

Our standard working hours are from **Monday** to **Friday** between **7am** and **6pm**, and **Saturday** between **8am** and **6pm**.

### What equipment will be used?

During the work we will use petrol saw cutters, dust extractors, lighting towers, hand power tools and light vehicles.

### How will this work affect you?

When we carry out saw cutting out of hours, it will generate noise levels that will be up to 15 dB (noticeable – clearly audible) above background noise levels (depending on distance) in the surrounding area.

We will make every effort to minimise the noise impact by:

- using the quietest equipment available
- installing noise barriers where practicable
- turning off machinery and vehicles when not in use
- monitoring noise and weather so we can manage any potential impacts and adjust our work, where possible.



Concrete laying and saw cutting will be staggered across eight areas between Badgerys Creek and Cecil Park. A map showing our work areas is below.

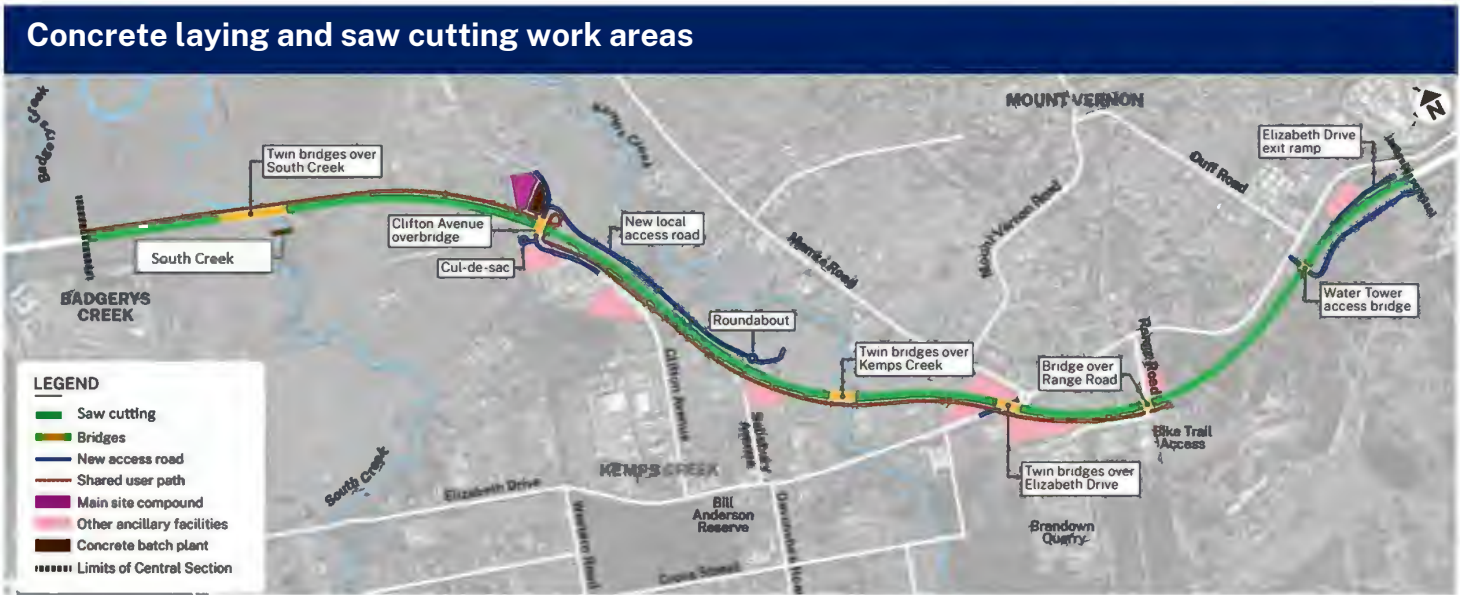
We have planned these sections based on how much concrete we can lay per shift. We expect saw cutting to take 6-8 hours, subject to weather conditions.

Saw cutting which may impact nearby residents in one area would only be carried out for up to three nights per week, with only two consecutive

nights per week and no more than 10 nights per month.

Directly affected residents will be contacted and advised of the likely impact and what we are doing to minimise disruption during our saw cutting work.

We appreciate the patience of the community while we carry out this important work.



## Contact us



Project Infoline and 24-hour Construction Response Line **1800 517 155**



**M12central@seymourwhyte.com.au**



**nswroads.work/m12**



PO Box 973  
Parramatta, NSW 2124



Visit the online portal go to **nswroads.work/m12**



**For the latest traffic updates:**  
Call 132 701, visit [livetraffic.com](http://livetraffic.com) or download the app Live Traffic NSW



### Interpreter service

For languages other than English call 131 450  
Arabic • Greek • Hindi • Mandarin • Vietnamese

طلب خدمة الترجمة الشفهية للغات غير الإنجليزية اتصل  
بالرقم **131 450**

Για υπηρεσίες διερμηνείας σε άλλες γλώσσες εκτός από τα Αγγλικά καλέστε το **131 450**

अंग्रेज़ी के अतिरिक्त अन्य भाषाओं के लिए दुभाषिया सेवा **131 450** पर कॉल करें

获取英语以外的其他语言口译协助服务可以致电**131 450**

Để có dịch vụ thông ngôn cho các ngôn ngữ khác tiếng Anh, gọi số **131 450**

[www.transport.nsw.gov.au/privacy-statement#Your\\_Privacy](http://www.transport.nsw.gov.au/privacy-statement#Your_Privacy)