

M12 Motorway

Aboriginal cultural elements

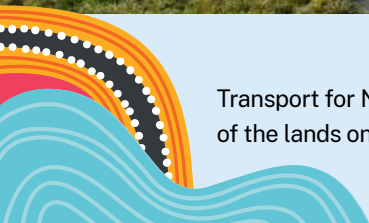


The Australian and NSW governments are securing a brighter future for Western Sydney's residents, visitors and workers by delivering the new M12 Motorway.



Artist impression of the M12 Motorway and Great Emu in the Sky sculpture at the airport interchange

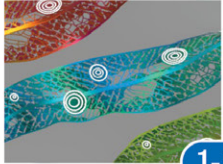
Transport for NSW acknowledges the Darug people as the Traditional Custodians of the lands on which we work and pays respect to Elders past and present.



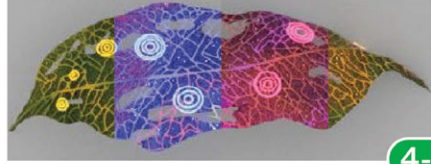
Our vision for the M12 Motorway is one of 'Connection to Country'

Transport is implementing a Connecting with Country approach for the M12 Motorway. We understand and recognise the Aboriginal and Torres Strait Islander knowledge of country, cultural values, stories and rights through cultural learning and awareness.

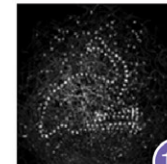
The M12 Motorway will provide road users, pedestrians and bike riders an immersive 'Welcome to Country' experience. We have included six key cultural interpretation elements for the community to enjoy.



Large Leaf Artwork



Small Leaf Artworks



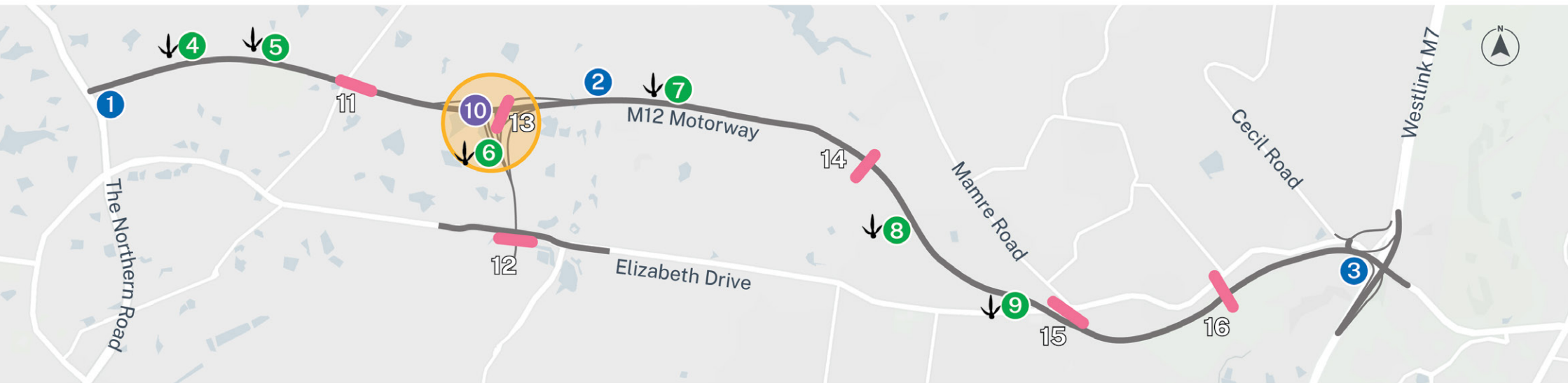
Great Emu Sculpture



Footprints on Country

KEY

- M12 Motorway
- Overbridge
- ↓ Footprints on Country



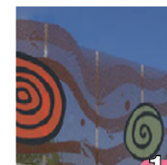
The Dry
Luddenham Road
North side



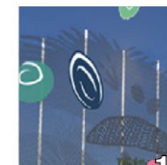
Mariong Chases the Male Emu
Elizabeth Drive into airport



Creation Phase
Eastbound ramp from
airport East side



Sitting in the Waterholes
Clifton Avenue West side



Male Emu Sits on the Nest
Elizabeth Drive East side



Ceremony Time
Water tower access
bridge East side

Overbridge Safety Screens

Six bridges along the motorway will have the Great Emu story through artworks integrated into the safety screens.

The six phases on Mariong (Emu) lifecycle will be shown. The bridge safety screens provide an enlarged canvas for these artworks.

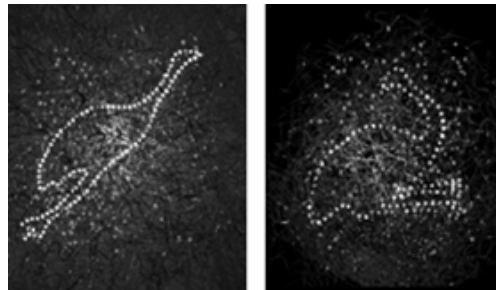


Artist impression of large leaf sculpture within the shared path corridor, coupled with Emu footprints inlayed within the path



The Great Emu in the Sky Sculpture

Located at the airport interchange, 'The Great Emu In The Sky' sculpture will be a 30 metres high. The sculpture will celebrate the Darug Community's sacred creation story of the Great Emu constellation. It will be visible from a number of viewpoints for road users, walkers and riders, Metro passengers, and possibly from approaching and departing planes from the Western Sydney International Airport.



Emu nest and form studies of the two forms of Mariong (Artist Cohort, Balarinji 2021)

The Great Emu in the Sky sculpture will reflect Interconnectedness, as most Aboriginal groups tell their own Emu in Sky story.

Eucalypt Canopies

Eucalypt leaf like canopy structures highlight the diverse seasons of Western Sydney. The Eucalypt Canopies represent the importance that the landscape plays within the Aboriginal culture and represent the themes of Respect for Country and Custodianship.

These leaf structures come in two types:

Large leaf sculptures - These are larger and used as artistic wayfinding markers within the landscape that can be enjoyed by road users, pedestrians and bike riders.

Small leaf sculptures - A single leaf sculpture is located at each rest node to provide cultural interest and to experience the land and its seasons within the Aboriginal community.

Integrated Wall Elements

The Elizabeth Drive interchange acts as a gateway between the airport precinct and the M12 Motorway. The interchange will have indigenous language and a constellation pattern crafted within the walls to act as a start and end point for the Aboriginal interpretation on the project.



Artist impression - Pattern finish, typical wall elevation

Western Sydney Seasonal Planting

The M12 Motorway will also celebrate the seasonal flora and fauna of Western Sydney by highlighting and celebrating six seasons of Aboriginal community. The seasonal planting will be done at rest nodes to ensure the nodes always be in bloom.



Footprints on Country

Emu footprints of different sizes, quantity and materials are used to represent experiences of people travelling along songlines and singing Country.

These footprints can be found at rest nodes which will act as speed breaker as well as provide cultural interest along the shared path. It makes the traveller part of the Emu story and encourages them to find more emu footprints.

Naming the Airport Access Road

Artist impression of the M12 Motorway and Elizabeth Drive interchange looking north



Transport engaged with Merana Aboriginal Community Association for the Hawkesbury Inc to provide and deliver a community engagement strategy for naming the new two kilometre “Airport Access Road”. The access road will be built as part of the M12 Motorway and continue for a further four kilometres onto Western Sydney International Airport land which will also have the same road name.

Merana engaged with local custodians, Elders and Aboriginal community groups and stakeholders to review the proposed road name. After successfully completing the consultation with key stakeholders, the name will be announced soon for the access road into the new Western Sydney International Airport.

Aboriginal Participation in Construction

To ensure Transport is delivering initiatives to enhance Aboriginal participation, the M12 Motorway has provided \$19 million to Aboriginal communities since the project started in August 2022. By end of June 2024, the project has spent around 2.2% of the total project value in Aboriginal businesses. In addition to this, the M12 has employed more than 390 Aboriginal people and has hired 23 Aboriginal businesses.



Contact us



Project Infoline **1800 517 155**



m12motorway@transport.nsw.gov.au



nswroads.work/m12



Scan the QR code to visit the Project website