

Night work in Kemps Creek and Cecil Park

M12 Motorway – Central

October 2024



Australian Government



Transport for NSW acknowledges the Dharug Nation as the Traditional Custodians of the lands on which we work and pays respect to Elders past and present.

The Australian and NSW governments are building the M12 Motorway to provide direct access to the Western Sydney International Airport at Badgerys Creek and connect to Sydney's motorway network.

What work are we doing?

Transport for NSW will continue night work for up to **21 nights** between **Tuesday 1 October** and **Thursday 31 October 2024** along Elizabeth Drive, Clifton Avenue, Mamre Road, Range Road and Duff Road in Kemps Creek and Cecil Park.

During this period, we will:

- continue to deliver earthworks and pavement materials to the construction site via Elizabeth Drive, Mamre Road, Range Road, Cecil Park and Clifton Avenue, Kemps Creek
- continue to install bridge safety screens, artwork and bridge lighting
- remove, repair and install road pavement as required
- install concrete kerbs and gutters
- deliver, use and remove oversized equipment and materials as required
- remove, repair and install road pavement as required
- carry out stormwater drainage works, landscape maintenance and grass cutting
- install new electrical and communication assets
- install permanent traffic safety barriers.

We will work at night for the safety of our workers and road users and to minimise traffic disruption.

Across the project, low impact earthwork, pavement and bridge work activities will continue from **6am, Monday to Saturday**. Concrete pours for bridge and pavement work, may on occasion, need to start from **5am** or finish after **6pm, Monday to Saturday** as continuity and weather are critical to ensuring the concrete pours and cures are done correctly to prevent failure of the pavement.

The map overleaf shows the location of our work.

Our work schedules

We will work between **6pm** and **7am**, from **Monday night to Saturday morning**. We will not work more than two nights in a row and three nights in a week, in the same location.

Normal work hours are between **7am** and **6pm, Monday to Saturdays**. There will be no work on public holidays.

What equipment will be used?

During the work, we will use excavators, compactors, graders, concrete pumps, concreting equipment, light and heavy vehicles, hand power tools, cranes, vacuum trucks, water carts, sweepers, milling machines, asphalt pavers, bobcats, elevated work platforms, mobile cranes and lighting towers.



How will this work affect you?

During our work you will see increased activity in the area. The work may be noisy at times, but we will complete noisier activities before midnight, and turn off equipment and machinery when not in use.

Report illegal dumping

We have observed numerous cases of illegal dumping at various locations in the Kemps Creek and Cecil Park areas. Illegal dumping is wrong and often dangerous. Penalties for illegal dumping can be up to \$15,000 and potential jail time for anyone caught.

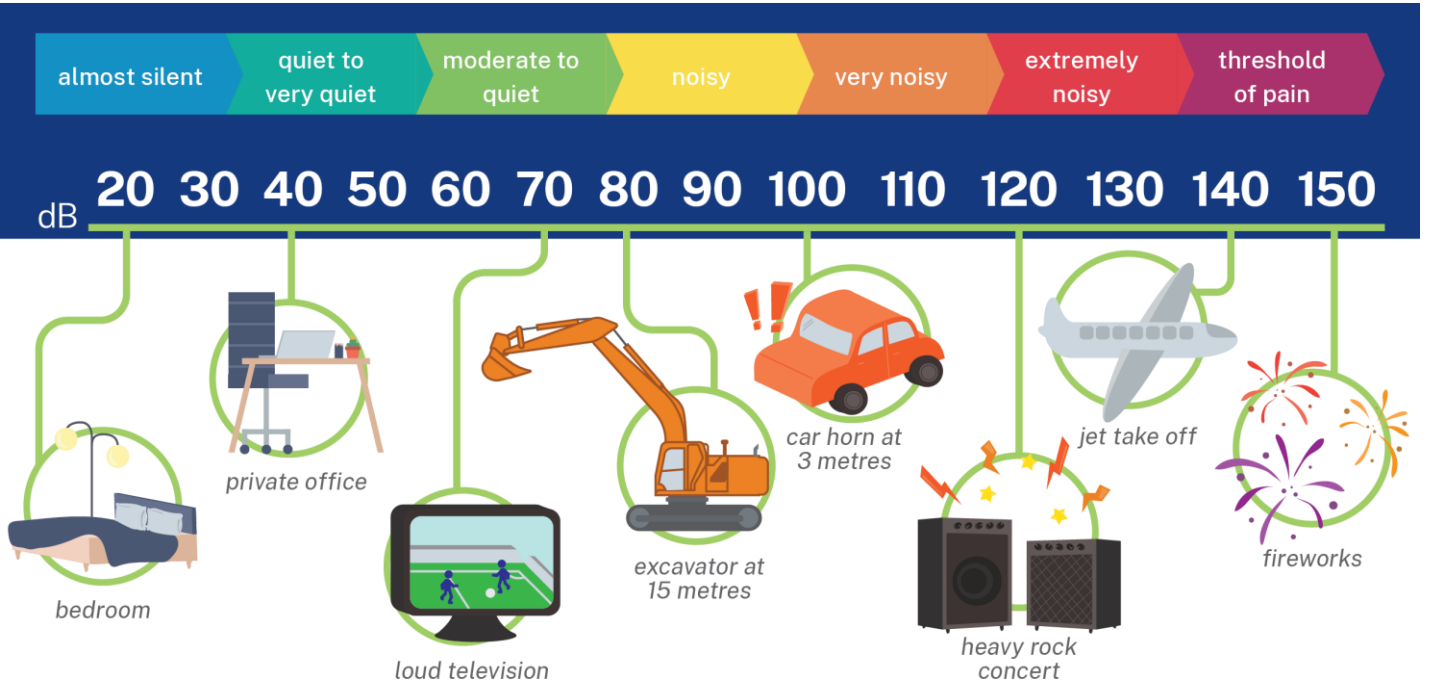
If the dumped waste is an immediate threat to human health or the environment, call the EPA Environment Line on 131 555 or make a report on the RID website at ridonline.epa.nsw.gov.au. Reports of illegal dumping can also be made to your local council.

Traffic changes

There will be temporary traffic changes along the work zone during our work hours to ensure the safety of motorists and workers. Please keep to speed limits and follow the direction of traffic controllers and signs.

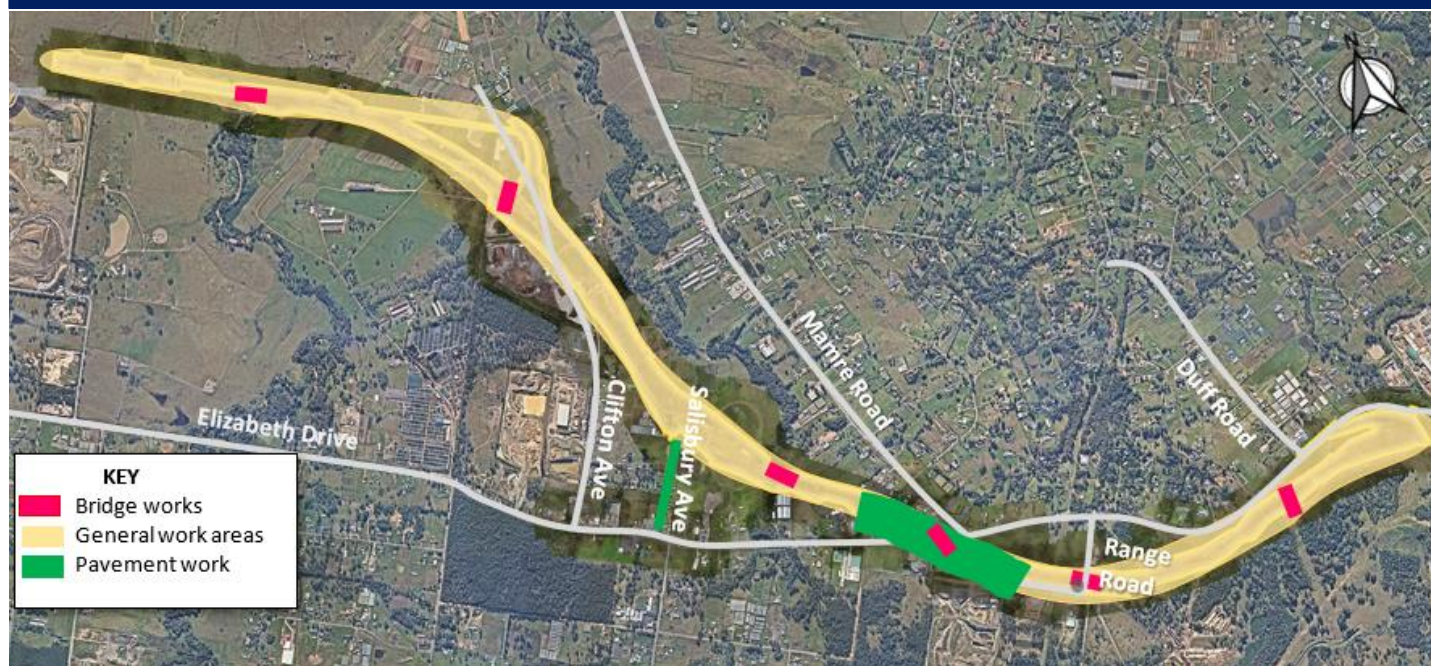
Out-of-hours work lookahead

OOHW Activities	Location	Work hours	Timing (2024)	Noise Impacts
Paving works	Elizabeth Drive Clifton Avenue	6pm to 7am Monday – Friday	Until mid-October	Moderate to quite
Finishing works	Elizabeth Drive	6pm to 7am Monday - Friday	October to November	Moderate to quite



Work area

Work zones – Elizabeth Drive, Clifton Avenue, Salisbury Avenue, Mamre Road, Range Road and Duff Road.



Contact us



Project Infoline and 24-hour Construction Response Line **1800 517 155**



M12central@seymourwhyte.com.au



nswroads.work/m12



PO Box 973
Parramatta, NSW 2124



Visit the online portal go to
nswroads.work/m12



For the latest traffic updates:
Call 132 701, visit livetraffic.com or
download
the app Live Traffic NSW



Interpreter service

For languages other than English call 131 450
Arabic • Greek • Hindi • Mandarin • Vietnamese

لطلب خدمة الترجمة الشفهية للغات غير الإنجليزية اتصل
بالرقم **131 450**

Για υπηρεσίες διερμηνείας σε άλλες γλώσσες εκτός από
τα Αγγλικά καλέστε το **131 450**

अंग्रेज़ी के अतिरिक्त अन्य भाषाओं के लिए दुभाषिया सेवा
131 450 पर कॉल करें

获取英语以外的其他语言口译协助服务可以致电**131 450**

Để có dịch vụ thông ngôn cho các ngôn ngữ khác tiếng
Anh, gọi số **131 450**

www.transport.nsw.gov.au/privacy-statement#Your_Privacy