

Pavement grinding and grooving on the M12 Motorway

M12 Motorway – Central

January 2025



Australian Government



Transport for NSW acknowledges the Dharug Nation as the Traditional Custodians of the lands on which we work and pays respect to Elders past and present.

The Australian and NSW governments are building the M12 Motorway to provide direct access to the Western Sydney International Airport at Badgerys Creek and connect to Sydney's motorway network.

What work are we doing?

We will continue grinding and grooving the concrete pavement on the new M12 Motorway between South Creek, Kemps Creek and Duff Road, Cecil Park to improve ride quality, reduce noise and extend the life of the pavement.

During this period, we will:

- grind pavement where surface roughness requires improvement
- groove pavement to provide a high level of texture and friction
- deliver, use and remove equipment as required.

The map overleaf shows the location of the work.

Our work schedules

We will work from **Tuesday 7 January** to **Friday 31 January**, weather and program permitting.

Our work hours are between **7am** and **6pm**, **Monday to Friday** and **8am** to **1pm**, **Saturday**.

What equipment will be used?

During this work, we will use a slurry truck, water truck, grinding and grooving equipment and street sweeper.

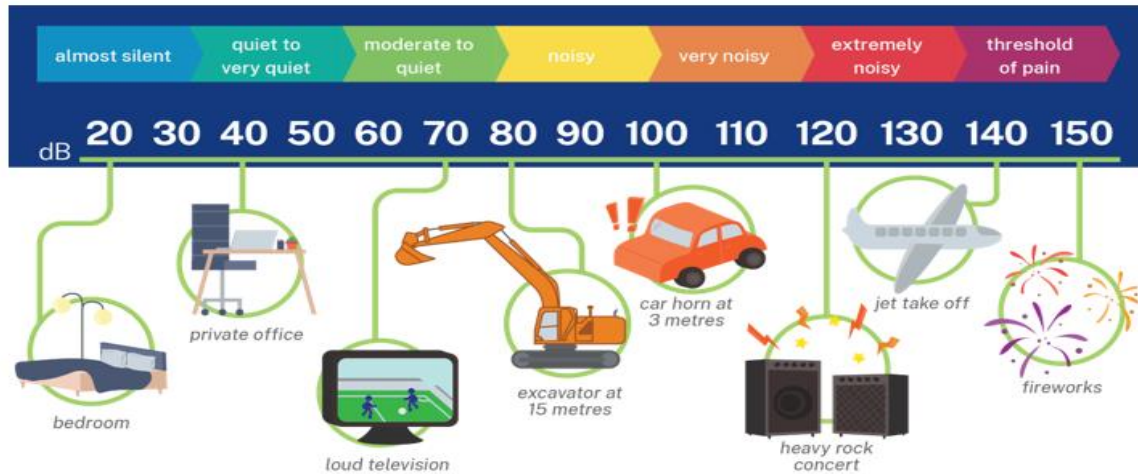
How will this work affect you?

We will use the machinery that may be noisy and may be more noticeable than normal. The noise that you are likely to hear may vary in volume depending on how close you are to work area.

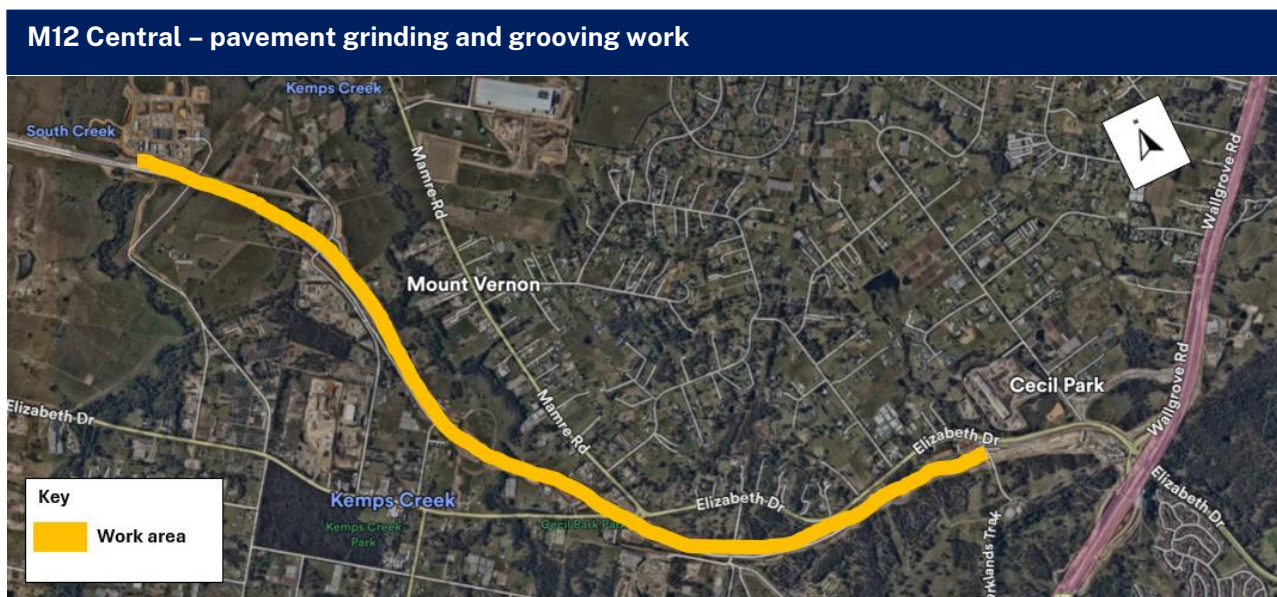
To reduce the impact on the community, we will work for three hours, break for an hour and work for another three hours.

We anticipate residents close to the work activity will be in the moderate to quiet noise level shown in the noise level comparison image overleaf.





Work area



Contact us



Project Infoline and 24-hour Construction Response Line **1800 517 155**



M12central@seymourwhyte.com.au



nswroads.work/m12



PO Box 973
Parramatta, NSW 2124



**Visit the online portal go to
nswroads.work/m12**



For the latest traffic updates:
Call 132 701, visit livetraffic.com or
download
the app Live Traffic NSW



Interpreter service

For languages other than English call 131 450
Arabic • Greek • Hindi • Mandarin • Vietnamese

لطلب خدمة الترجمة الشفهية للغات غير الإنجليزية اتصل
بالرقم **131 450**

Για υπηρεσίες διερμηνείας σε άλλες γλώσσες εκτός από
τα Αγγλικά καλέστε το **131 450**

अंग्रेज़ी के अतिरिक्त अन्य भाषाओं के लिए दुभाषिया सेवा
131 450 पर कॉल करें

获取英语以外的其他语言口译协助服务可以致电**131 450**

Để có dịch vụ thông ngôn cho các ngôn ngữ khác tiếng
Anh, gọi số **131 450**

www.transport.nsw.gov.au/privacy-statement#Your_Privacy



To subscribe to the email distribution list for this project, please contact m12motorway@transport.nsw.gov.au

Page 2 of 2