

Road closure on Salisbury Avenue, Kemp's Creek

M12 Motorway – Central

October 2024



Australian Government



Transport for NSW acknowledges the Dharug people as the Traditional Custodians of the lands on which we work and pays respect to Elders past and present.

The Australian and NSW governments are building the M12 Motorway to provide direct access to the Western Sydney International Airport at Badgerys Creek and connect to Sydney's motorway network.

What work are we doing?

We will temporarily close Salisbury Avenue for four hours on **Friday 11 October 2024** between **10am** and **2pm**, weather permitting.

We need to close the road to resurface the road on Salisbury Avenue, Kemp's Creek.

During this work we will:

- set up traffic control and signs
- remove existing road surface
- lay new road surface
- reinstate drainage.

The map overleaf shows the location of work.

Our work schedules

We will work between **10am** and **2pm** on **Friday 11 October 2024**, weather permitting.

If we need to reschedule this work due to weather, we will work on **Monday 14 October 2024** between **10am** and **2pm**. We will notify you in advance if this takes place.

What equipment will be used?

During the work we will use, asphalt pavers, rollers, excavators, street sweeper, light vehicles, heavy vehicles, profiling machine, line-marking truck and hand power tools.

How will this work affect you?

To assist us in completing this work we are asking residents not to park their vehicles along the road.

Access in and out of your driveway will be blocked during the road closure. Pedestrian access will be maintained.

We will make every effort to minimise disruption by:

- using the quietest equipment available
- turning off machinery and vehicles when not in use

Traffic changes

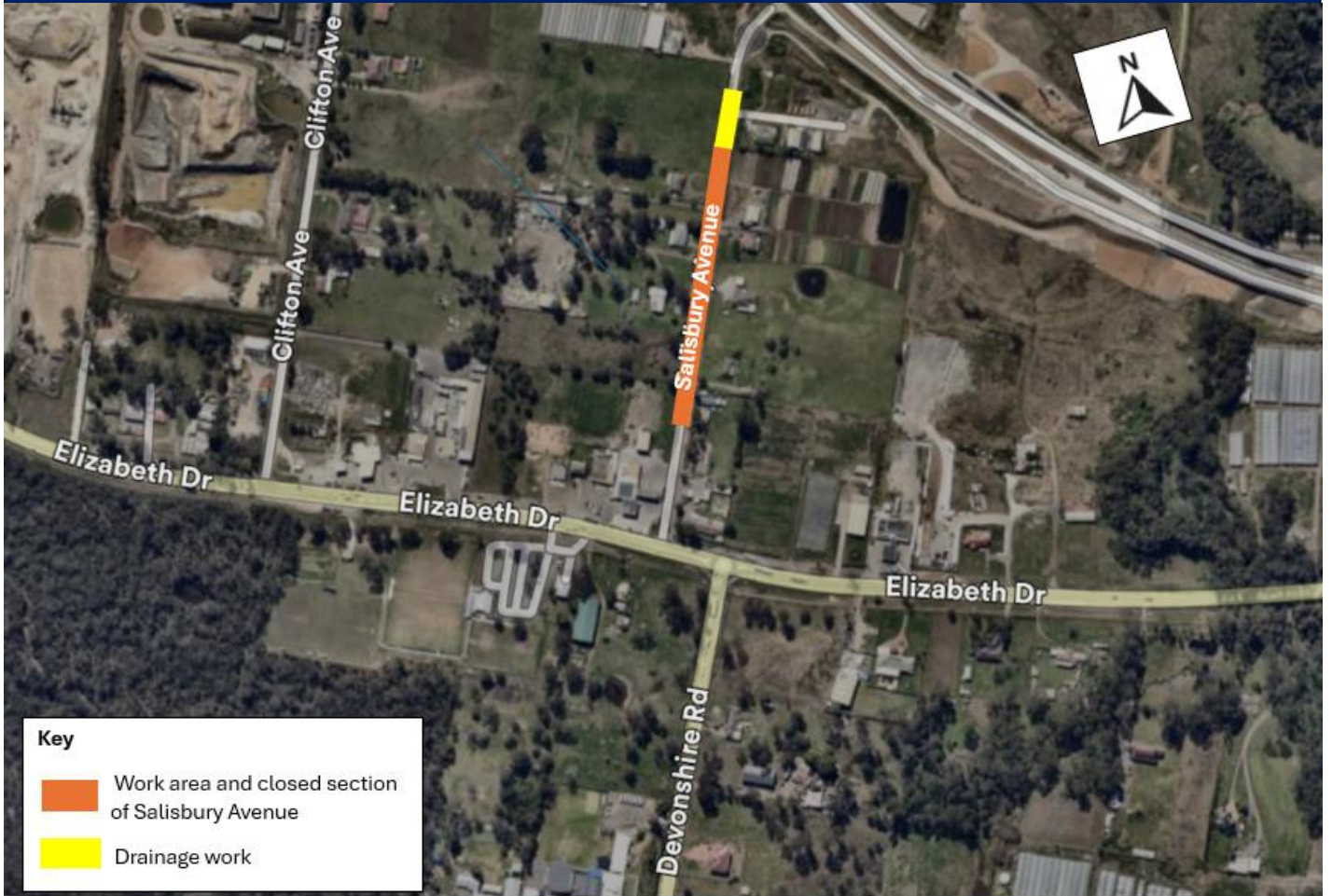
Salisbury Avenue will be closed with traffic control in place. Emergency services will always have access.

Please follow the direction of traffic controllers and signs.

Thank you for your patience during this important work.



Work area on Salisbury Avenue, Kemps Creek



Contact us



Project Infoline and 24-hour Construction Response Line **1800 517 155**



M12central@seymourwhyte.com.au



nswroads.work/m12



PO Box 973
Parramatta, NSW 2124



**Visit the online portal go to
nswroads.work/m12**



For the latest traffic updates:
Call 132 701, visit livetraffic.com or
download
the app Live Traffic NSW



Interpreter service

For languages other than English call 131 450
Arabic • Greek • Hindi • Mandarin • Vietnamese

لطلب خدمة الترجمة الشفهية للغات غير الإنجليزية اتصل
بالرقم **131 450**

Για υπηρεσίες διερμηνείας σε άλλες γλώσσες εκτός από
τα Αγγλικά καλέστε το **131 450**

अंग्रेजी के अतिरिक्त अन्य भाषाओं के लिए दुभाषिया सेवा
131 450 पर कॉल करें

获取英语以外的其他语言口译协助服务可以致电**131 450**

Để có dịch vụ thông ngôn cho các ngôn ngữ khác tiếng
Anh, gọi số **131 450**

www.transport.nsw.gov.au/privacy-statement#Your_Privacy