



Traffic changes on Elizabeth Drive, Kemps Creek

M12 Motorway – Central

March 2024



Australian Government



Transport for NSW acknowledges the Dharug Nation as the Traditional Custodians of the lands on which we work and pays respect to Elders past and present.

The Australian and NSW governments are building the M12 Motorway to provide direct access to the Western Sydney International Airport at Badgerys Creek and connect to Sydney's motorway network.

What work are we doing?

Transport for NSW will move traffic onto temporary pavement on Elizabeth Drive, 200 metres west of the Elizabeth Drive and Mamre Road roundabout from **Saturday 2 March 2024**.

We will also make some temporary changes to the Elizabeth Drive and Mamre Road roundabout. These changes will include:

- a dedicated lane to turn left from Mamre Road onto Elizabeth Drive
- a dedicated lane to turn right and a lane to go straight ahead at Elizabeth Drive westbound approach.

These temporary changes are needed so we can complete work on the new bridge over Elizabeth Drive as part of the M12 Motorway project.

We have included a map over the page to show these changes.

We will work at night on **Thursday 29 February** and **Friday 1 March** to prepare for the traffic change. During this work, we will:

- carry out asphaltting and line markings
- install signage and temporary concrete barriers on Elizabeth Drive
- deliver, use and remove equipment as needed.

If these dates change due to weather or program changes, we will inform the community via email and roadside digital signs.

Our work schedule

Preparation work will take place between **6pm** and **7am** under traffic control, weather permitting.

The traffic changes will take place from **4am** on **Saturday 2 March**, weather permitting.

What equipment will be used?

During the preparation work we may use light and heavy vehicles, pavement profilers, line marking trucks, hand power tools, water carts, sweepers, asphalt pavers, bobcats and rollers.

How will this work affect you?

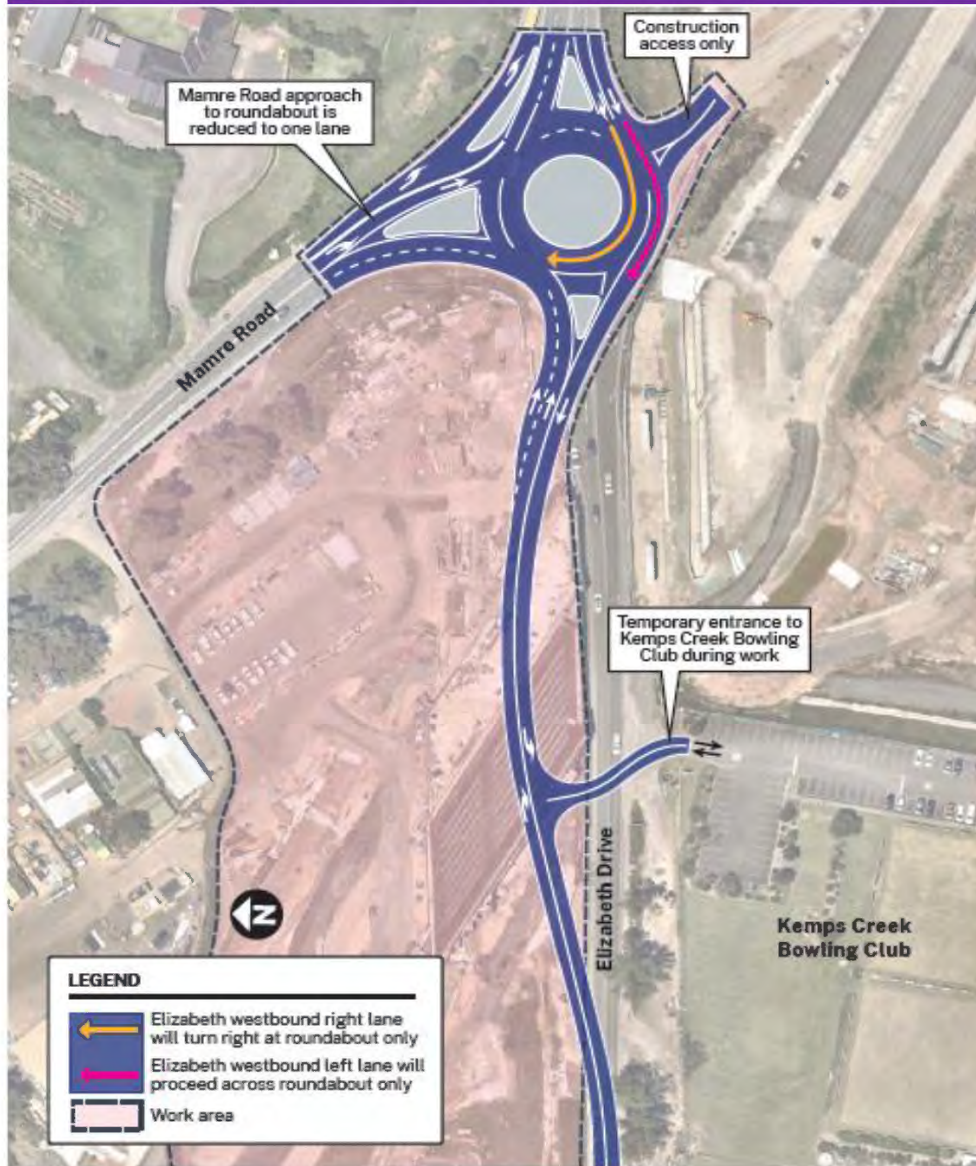
During our work you may see increased activities in the area. The work may be noisy at times, but we will do everything we can to minimise its impact, including completing noisier activities earlier in the night before **midnight** where possible and turning off equipment and machinery when not in use.

Traffic changes

There will be temporary traffic changes and reduced speed limits in place to ensure the work zone and road is safe for motorists and workers. A 40 km/h speed limit will be in place on Mamre Road and Elizabeth Drive approaching the Elizabeth Drive and Mamre Road roundabout and the work area until late 2024. Please keep to speed limits and follow the direction of traffic controllers and signs.



Location of traffic changes on Elizabeth Drive



Contact us



Project Infoline **1800 517 155**



M12central@seymourwhyte.com.au



nswroads.work/m12



Po Box 973 Parramatta, NSW 2124



For the latest traffic updates:

Call 132 701, visit livetraffic.com or download the app Live Traffic NSW



Interpreter service

For languages other than English call 131 450
Arabic • Greek • Hindi • Mandarin • Vietnamese

لطلب خدمة الترجمة الشفهية للغات غير الإنجليزية اتصل
بالرقم **131 450**

Για υπηρεσίες διερμηνείας σε άλλες γλώσσες εκτός από
τα Αγγλικά καλέστε το **131 450**

अंग्रेज़ी के अतिरिक्त अन्य भाषाओं के लिए दुभाषिया सेवा
131 450 पर कॉल करें

获取英语以外的其他语言口译协助服务可以致电**131 450**

Để có dịch vụ thông ngôn cho các ngôn ngữ khác tiếng
Anh, gọi số **131 450**

www.transport.nsw.gov.au/privacy-statement#Your_Privacy