

Rail Service Improvement Program

Homebush to Strathfield Signalling Upgrade

July 2024



Transport for NSW acknowledges the Wangal people of the Dharug Nation as the Traditional Custodians of the lands on which we work and pays respect to Elders past and present.

The Rail Service Improvement Program aims to support a safe, equitable, and integrated transport network where people can travel more safely, reliably, and efficiently across NSW.

What work are we doing?

In July 2024, we will be:

- upgrading existing electrical infrastructure
- testing train services and electrical upgrades between Homebush and Strathfield and Ashfield and Flemington stations

When and where we'll be working

Work will occur within the rail corridor between Homebush and Strathfield.

Standard construction hours on this project are between **7am and 6pm Monday to Friday and 8am and 1pm on Saturdays.**

Out of hours work

In July, some work is required to take place outside of standard construction hours.

This work will take place between:

- **6pm and 7am on Wednesday 17 July, Thursday 18 July and Friday 19 July 2024**
- **12am and 5am on Saturday 27 and Sunday 28 July 2024.**

What will this mean for you?

You may notice:

- workers and vehicles
- some staff parking in the Parnell Street car park in Strathfield and on The Crescent in Homebush
- noise from machinery and equipment.

There will be no residential power outages as part of this work.

Managing our impacts

We understand construction activities may cause disruption to our closest neighbours and every effort will be made to minimise impacts where possible, including:

- locating equipment as far away from residents and businesses as possible
- directing lighting towers downwards and away from residents
- conducting on site monitoring to ensure compliance with strict environmental conditions relating to noise, vibration and dust management.

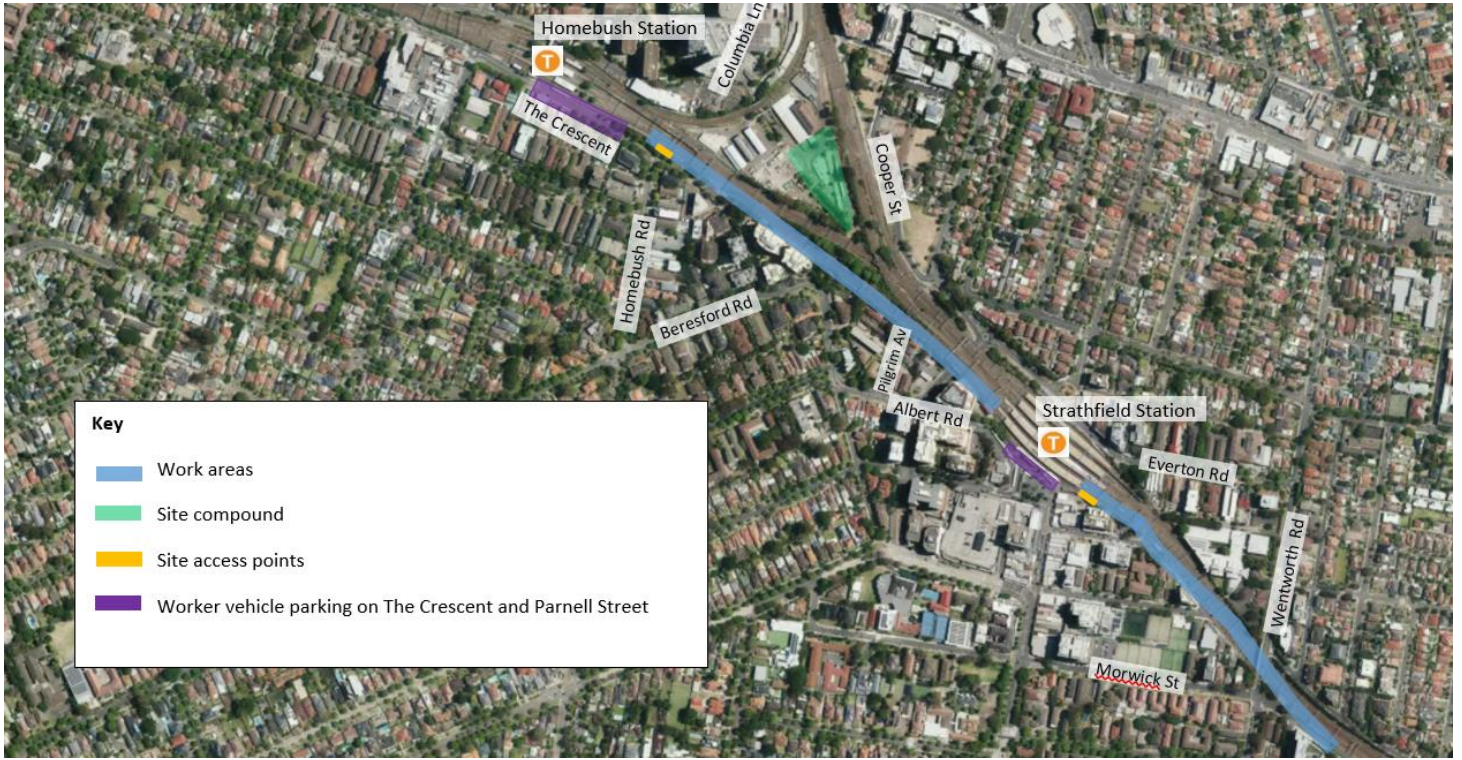
We are going paperless

In April, we notified to advise we will no longer be distributing paper notifications. On this occasion, as we are working across a larger geographical area, we have made the decision to distribute a paper copy of our construction update.

In future, we will be providing updates digitally via email. To register for our email distribution list, or request to continue receiving paper notifications, please scan the QR code on the back page.



Location of work area



Contact us



Project Infoline **1800 684 490**
24-hour Construction Response Line
1800 775 465



projects@transport.nsw.gov.au



www.transport.nsw.gov.au/mtms



7 Harvest Street
Macquarie Park, NSW 2200



Visit the online portal go to
caportal.com.au/tfnsw/mtms



For the latest traffic updates:
Call 132 701, visit livetraffic.com or
download the app Live Traffic NSW



Interpreter service

For languages other than English call 131 450
Arabic • Greek • Hindi • Mandarin • Vietnamese

لطلب خدمة الترجمة الشفهية للغات غير الإنجليزية اتصل
بالرقم **131 450**

Για υπηρεσίες διερμηνείας σε άλλες γλώσσες εκτός από
τα Αγγλικά καλέστε το **131 450**

अंग्रेज़ी के अतिरिक्त अन्य भाषाओं के लिए दुभाषिया सेवा
131 450 पर कॉल करें

获取英语以外的其他语言口译协助服务可以致电**131 450**

Để có dịch vụ thông ngôn cho các ngôn ngữ khác tiếng
Anh, gọi số **131 450**

www.transport.nsw.gov.au/privacy-statement#Your_Privacy