

# Homebush to Strathfield Signalling Upgrade

## More Trains, More Services

March and April 2024



Transport for NSW acknowledges the Wangal people of the Dharug Nation as the Traditional Custodians of the lands on which we work and pay respects to Elders past and present.

The More Trains, More Services program will simplify and modernise the rail network creating high capacity, turn up and go services for many customers.

This project will upgrade the infrastructure inside the rail corridor between Homebush and Strathfield to improve train movements through the stations.

### What work are we doing?

Upcoming work inside the rail corridor will involve:

- upgrading the overhead wiring infrastructure that powers the trains
- construction of new concrete foundations
- work on electrical infrastructure such as cables and metal cable covers.

### When we'll be working

Standard construction hours are between **7am and 6pm Monday to Friday** and **8am and 1pm on Saturdays**.

For safety reasons, some work will take place during scheduled Sydney Trains trackwork periods when no trains will be running from:

- **10pm Friday 1 March to 2am Monday 4 March 2024**
- **10pm Friday 8 March to 6am Monday 11 March 2024**
- **10pm Friday 5 April to 2am Monday 8 April 2024.**

You may also notice out-of-hours deliveries of machinery the days before and after each trackwork period.

### Temporary parking and traffic changes

The following parking changes will be in place to facilitate construction activities:

- **Railway Avenue, Strathfield**

On-street parking will be temporarily unavailable from 12pm Friday 8 March to 6pm Sunday 10 March 2024

*Vehicle and driveway access to properties on Railway Avenue will be maintained under the direction of traffic control*

- **Parnell Street, Strathfield**

The carpark (located east of The Boulevard) and sections of on-street parking will be temporarily unavailable from

- 9pm Thursday 7 March to 6am Monday 11 March 2024
- 9pm Thursday 4 April to 6am Monday 8 April 2024

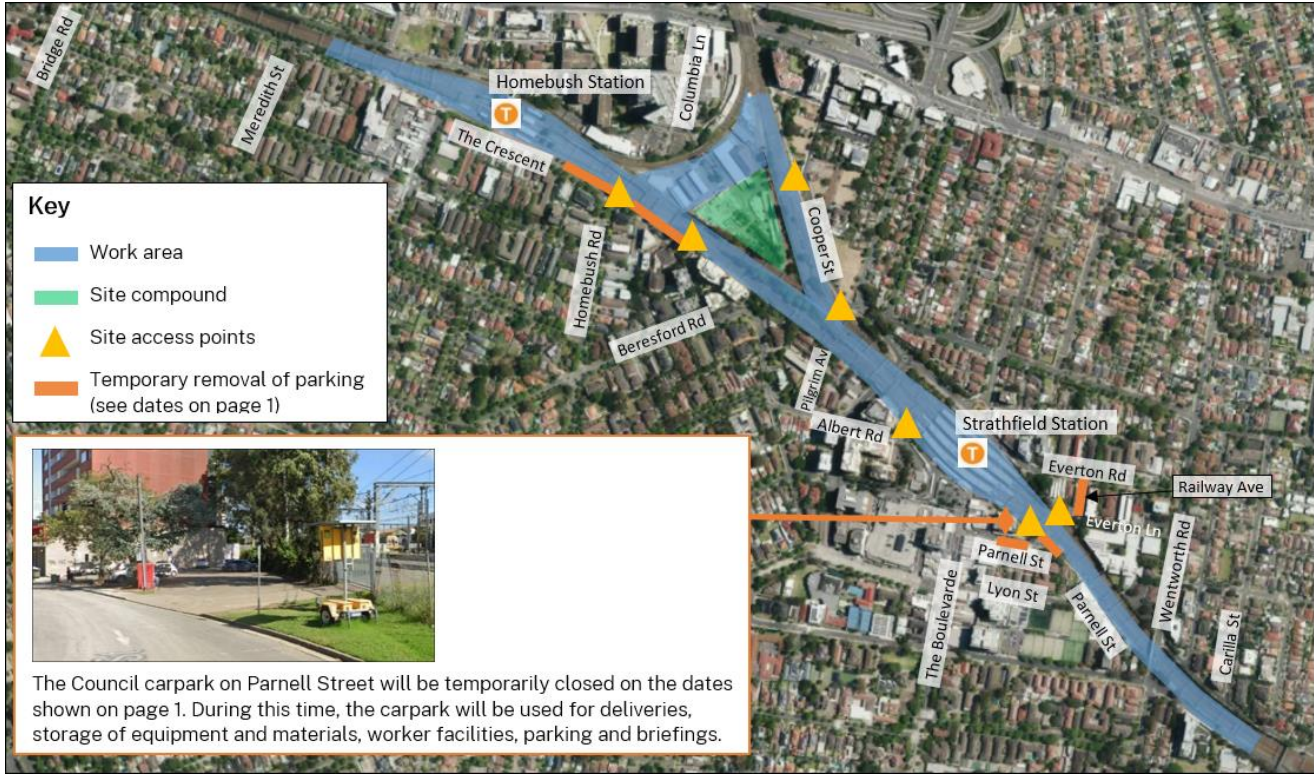
- **The Crescent, Homebush/Strathfield**

Up to 25 on-street parking spaces will be temporarily unavailable near the intersection with Homebush Road from 10pm Friday 5 April to 2am Monday 8 April 2024.

During the trackwork periods, you may also notice traffic control on the following streets: **Railway Avenue, Everton Lane, Cooper Street, Parnell Street, The Crescent and Columbia Lane**. We apologise in advance for any short delays you may experience while our construction vehicles and machines enter and exit the rail corridor under the direction of traffic control.



## Location of work



## What will this mean for you?

In addition to temporary parking changes and traffic control, you may notice:

- an increase in workers and vehicles
- noise from machinery and equipment
- lighting from temporary lighting towers.

## Managing our impacts

We understand construction activities may cause disruption for the community. We will seek to minimise impacts as much as possible and adhere to strict environmental conditions relating to noise, vibration and dust management.

## We are going paperless

This is the last paper notification you will receive from us.

We are committed to reducing our paper usage and environmental impacts. After March 2024, we will no longer be distributing paper notifications to residents (unless requested). Instead, we will contact you via email when there is construction work that may impact you.



If you haven't already, please scan the QR code to register for email updates about our work in your area.

If you wish to continue to receive paper notifications, you can request this via the QR code or by contacting us via the details below.

## Contact us



Project Infoline **1800 684 490**

24-hour Construction Response Line  
**1800 775 465**



[projects@transport.nsw.gov.au](mailto:projects@transport.nsw.gov.au)



[www.transport.nsw.gov.au/mtms](http://www.transport.nsw.gov.au/mtms)



## Interpreter service

For languages other than English call 131 450

Arabic • Cantonese • Hindi • Mandarin • Vietnamese

طلب خدمة الترجمة الشفهية للغات غير الإنجليزية اتصل بالرقم  
**131 450**

獲取英語以外的其他語言傳譯協助服務可以致電**131 450**

अंग्रेज़ी के अतिरिक्त अन्य भाषाओं के लिए दुभाषिया सेवा **131 450**  
पर कॉल करें

获取英语以外的其他语言口译协助服务可以致电**131 450**

Để có dịch vụ thông ngôn cho các ngôn ngữ khác tiếng Anh,  
gọi số **131 450**



Subscribe for updates via the QR code

[www.transport.nsw.gov.au/privacy-statement#Your\\_Privacy](http://www.transport.nsw.gov.au/privacy-statement#Your_Privacy)