

# Sydney Trains

## Morrisset to Vales Point Resignalling

From Saturday 3 August to Monday 5 August 2024

### What we're doing

To modernise the rail network, Sydney Trains is carrying out construction work from Morrisset to Vales Point from Saturday 3 August to Monday 5 August.

This work involves modification and renewal of existing signal infrastructure, construction of cable routes and track and drainage works.

We understand this work may have an impact on you and appreciate your patience and understanding.

### How this affects you

#### Noise and Light Pollution

- These works may create additional noise at night during this period.
- **Work will take place from 2am Saturday 3 August to 2am Monday 5 August.**
- Equipment may be delivered to the worksite outside the above times. Some deliveries may occur at night due to day time travel restrictions on large vehicles.
- Diesel work trains will be kept on site and may be idling for extended periods.
- Finishing works may take place following this period, including the removal of equipment.
- Light pollution will be minimised by directing light away from properties.

#### Traffic and Parking

- Heavy vehicles will be using local streets to access the rail corridor.
- Sydney Trains staff and employees will park vehicles inside the rail corridor where possible, but please be aware that on-street parking may be limited near worksites.
- **The northern portion of the carpark on Macquarie Street at Morrisset Station will be closed from Monday 29 July to Friday 9 August.**
- **The southern portion of the carpark on Macquarie Street at Morrisset Station will be closed from Saturday 3 August to Monday 5 August.**

We apologise for any inconvenience and thank you for your co-operation during these essential works.

### Contact us

For upcoming work: [www.transport.nsw.gov.au/sydtraincommunity](http://www.transport.nsw.gov.au/sydtraincommunity)

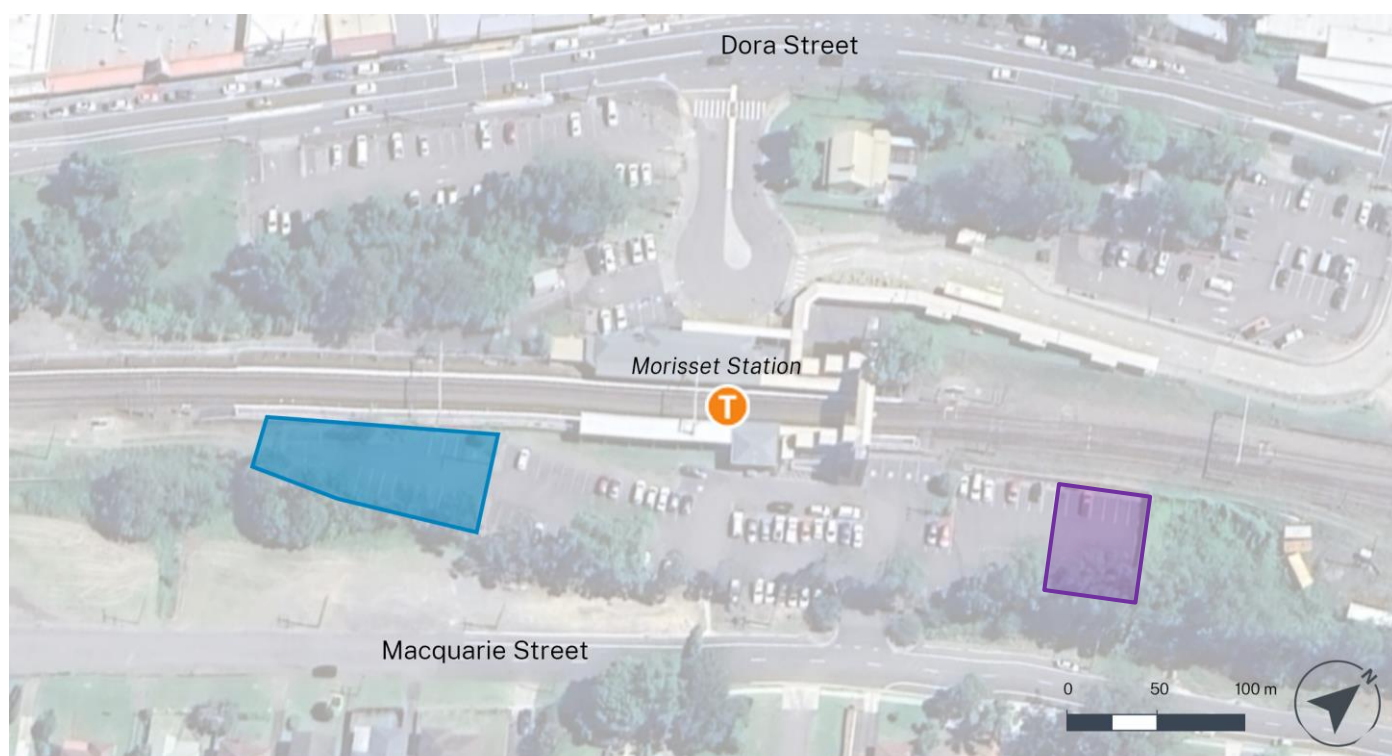
To report environmental concerns (24hours) **1300 656 999**



Project Infoline: **1800 684 490**

Email: [projects@transport.nsw.gov.au](mailto:projects@transport.nsw.gov.au)

# Sydney Trains

## Location of parking impacts



- KEY
-  Parking unavailable from Saturday 3 August to Monday 5 August
  -  Parking unavailable from Monday 29 July to Friday 9 August