

Extended closures on M4 ramps and Mulgoa Road lanes from 2 to 24 January 2025

December 2024



Australian Government



Transport for NSW acknowledges the Dharug people as the Traditional Custodians of the lands on which we work and pays respects to Elders past and present

Transport for NSW is continuing work on the Mulgoa Road upgrade between Jeanette Street and Blaikie Road.

During January 2025, when traffic volumes are at their lowest at any time of the year, there will be significant changes through the project area so we can accelerate complex work around the M4 ramps.

The **M4 eastbound and westbound ramps to and from Mulgoa Road**, and one lane each way on Mulgoa Road will be closed from **2 – 24 January 2025**.

What work are we doing?

Work during this time will build the road surfaces at the M4 ramps and Mulgoa Road intersection, (see map on next page).

This work needs to be done continuously, instead of in shifts, for the safety of workers and road users and so the work can meet road standards.

The stockpile site at 95 Blaikie Road will be used on all the above nights.

We will be using machinery such as temporary light towers, concrete saws, excavators, trucks, and other equipment that may be needed.

When will we be working

We will work continuously **from 5am Thursday 2 January until 5am Friday 24 January**.

However, we will not work **from 6pm Saturdays until 8am Sundays** and **from 6pm Sundays until 7am Mondays**.

Traffic changes day and night

The **ramps to and from the M4 at Mulgoa Road and lanes on Mulgoa Road will be closed continuously during this time**.

- For road users on the M4:
 - use the nearby ramps at Russell Street and The Northern Road to access Mulgoa Road
- For road users entering the M4:
 - use Mulgoa Road and The Great Western Highway/Russell Street/The Northern Road

One lane will be closed in each direction on Mulgoa Road between School House Road and Wolseley Street.

What will this mean for you?

We appreciate the patience and understanding of the community and road users. Please plan ahead and allow extra travel time.

To ensure the safety of workers and road users, there will be traffic controllers to guide road users. Please keep to speed limits

and follow the direction of traffic controllers and signs.

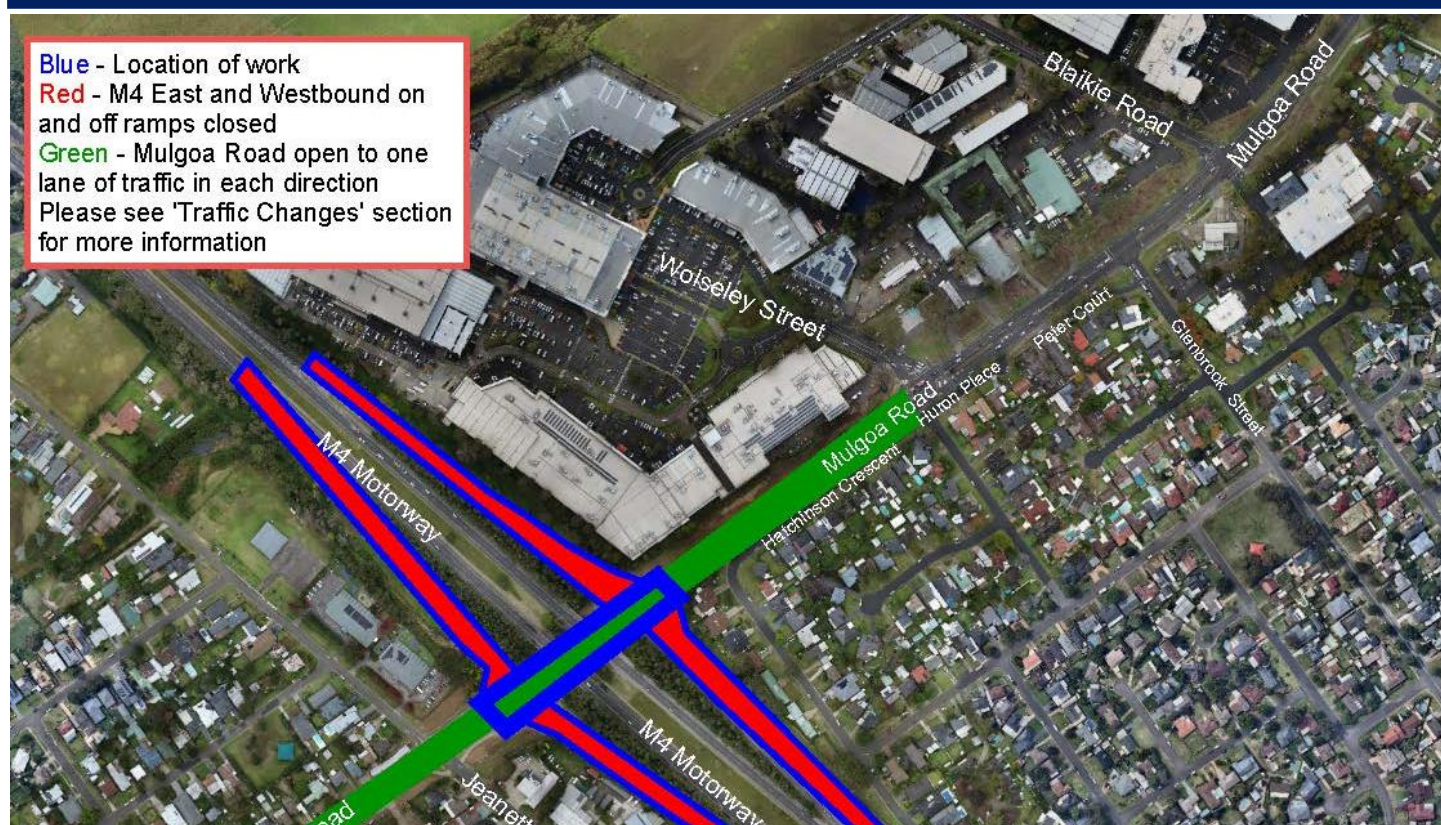
In addition to the traffic changes, our work may be noisy at times, we will do everything we can to minimise its impact, including turning off machinery when not in use.

We will try and complete the noisier part of the work before midnight, However, there may be some intermittent noisy work after midnight.

You may hear some squawking from reversing trucks and flashing lights while we restore the worksite. These are essential for us to maintain safe work practices.

Thank you for your patience during this important work.

Location of work and traffic changes on Mulgoa Road and M4 ramps



Contact us



Project Info and Complaints line
1800 733 084 – Press 1



Construction.mulgoaroadupgrade@transport.nsw.gov.au



nswroads.work/jeanetteestblaikierd



For the latest traffic updates:
Call 132 701, visit livetraffic.com or download the app Live Traffic NSW



Interpreter service

For languages other than English call 131 450
Arabic • Greek • Hindi • Mandarin • Vietnamese

لطلب خدمة الترجمة الشفهية للغات غير الإنجليزية اتصل
بالرقم **131 450**

Για υπηρεσίες διερμηνείας σε άλλες γλώσσες εκτός από τα Αγγλικά καλέστε το **131 450**

अंग्रेजी के अतिरिक्त अन्य भाषाओं के लिए दुभाषिया सेवा
131 450 पर कॉल करें

获取英语以外的其他语言口译协助服务可以致电**131 450**

Để có dịch vụ thông ngôn cho các ngôn ngữ khác tiếng Anh, gọi số **131 450**



Scan the QR code to keep up to date with the project.