



## About the project

Transport for NSW is building a safer and more efficient Princes Highway and is carrying out early planning investigations for a Nowra bypass.

The Nowra bypass and transport improvements study is in its early planning phase. Investigations as part of this phase will consider how a bypass and transport improvements can support Nowra's growing community. With Nowra-Bomaderry being a key destination for the Shoalhaven community, the study also identifies ways of easing traffic congestion and improving connectivity to benefit the community, small businesses, tourism and local employment.

The Princes Highway is a critical link between Sydney, the Illawarra and the Shoalhaven and provides vital tourism, freight and business connections between towns and regional centres from the South Coast through to the Victorian border.

## When will work on the bypass start?

Transport for NSW is in the early planning phase of investigating options for a bypass of Nowra. This work includes traffic modelling and preliminary environmental investigations to inform future

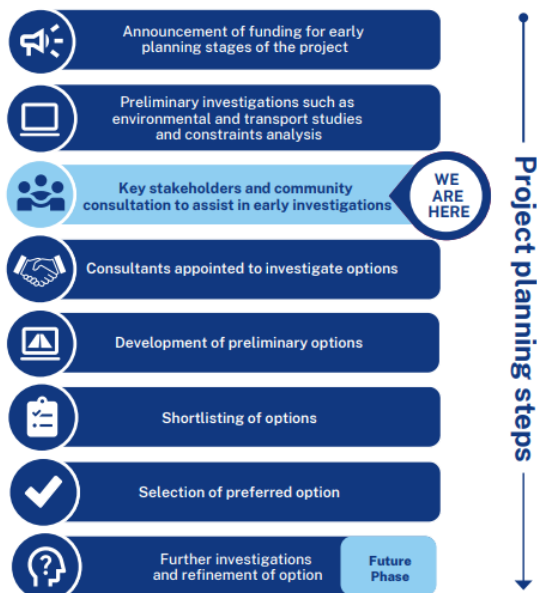
development work. Feedback from the community and stakeholders will inform planning for the project.

The planning phase is expected to take up to three years. Once this initial phase is complete and additional funding is allocated, the project will move into its development phase.

The development phase of a major project, such as the Nowra bypass, is extensive and timeframes are yet to be determined.

The community will be kept informed as we move through the planning process.

### Project planning steps



## Has the Nowra bypass corridor (where the bypass will be built) been decided?

Although a corridor has been identified in the Shoalhaven Local Environmental Plan, a preferred corridor for the proposed Nowra bypass has not been decided.

Transport is in the early planning phase, and this phase includes investigating all the options for a bypass of Nowra. Community consultation was carried out in the second half of 2023 to gain feedback from the community about their experiences with transport in Nowra and the surrounding towns.

A preferred route and future features of the proposed bypass, including access point locations and the number of north and southbound lanes, will be determined once we've considered the community's feedback and carried out further investigations.

## What happens during the early planning phase?

During the initial planning phase of the project, Transport will consider the project goals and objectives, community and service needs, existing network problems, planned land use

development and growth projections, social and environmental factors, Aboriginal and non-Aboriginal cultural heritage, floodplains, terrain, key constraints, and engineering requirements.

During this phase, early corridor options and network upgrades may be identified.

## **How are corridor options identified?**

Before identifying corridor options, Transport carries out an extensive planning and development process. This process includes listening to community feedback, workshops with government agencies, environmental and cultural heritage investigations, and assessment of key constraints and design requirements.

Once corridor options are developed, further consultation is held to discuss and assess how the options meet the project objectives. The development process identifies a range of corridor options which are then shortlisted. More studies and investigations are carried out before a preferred corridor is selected.

As planning for the bypass continues, the community will have the opportunity to provide feedback which will be considered during future planning stages.

## **I've heard some people have been asked to participate in surveys and/or workshops. How can I have a say on the project?**

Transport is engaging with a range of stakeholders during the early planning phase. The wider community will continue to have opportunities to provide their feedback.

During the second half of 2023, Transport carried out community consultation to gather feedback from the community about a bypass of Nowra, suggestions for ways transport options can be improved, and the challenges they experience when travelling (including walking, cycling and using public transport) in and around Nowra.

Feedback from our various community consultation activities will be summarised in a consultation report that will be released on Transport's website in April 2024.

Feedback or questions about the project be emailed the project team:

[nowrabypass@transport.nsw.gov.au](mailto:nowrabypass@transport.nsw.gov.au)

## **What options are being considered for transport improvements as part of this study?**

The planning phase will aim to identify ways of easing traffic congestion, improving safety and connectivity for the local community, local businesses and tourism.

Planning for a bypass of Nowra is a long-term initiative. Short-term initiatives may include improving safety and congestion and identifying how improvements can be made to increase options for public and active transport (walking, cycling and mobility scooters).

## **Some local roads in the area need repair. How will Transport address these immediate needs?**

Shoalhaven City Council is responsible for local roads in the area. Information about local roads can be found on council's [webpage here](#).

Transport acknowledges the community's concerns around maintenance on local roads and will continue to support councils in seeking funding for road maintenance and improved shared paths.

## **How much funding has been allocated to the Nowra bypass project?**

Jointly, the Australian and NSW governments have committed \$105 million for the planning phase of Nowra bypass.

Construction funding is yet to be confirmed.

## **The NSW State Budget included \$12 million for the East Nowra Sub Arterial Road. What impact does this project have on the bypass and traffic improvements planning?**

The NSW Government commitment of \$12 million for the East Nowra Sub-Arterial road (ENSA) is welcomed by Transport. This initial funding will be provided to Shoalhaven City Council for planning and early work.

The ENSA is a proposed sub-arterial road that would provide an alternative connection between the Princes Highway and Greenwell Point Road and could be used for travel between the Princes Highway and coastal villages to the east of Nowra, including Worrigeen.

Impacts and benefits the ENSA project may have for a bypass of Nowra will be considered throughout the Nowra bypass and transport improvements study's planning phase.

Transport continues to explore both short and long-term initiatives to provide a safer Princes Highway, reduce congestion, and help make Nowra's growing community a better place to live, work, study and visit.

More information about the ENSA project can be found on Shoalhaven City Council's [webpage here](#).

## How do I contact the project team and/or find out more information?

Visit the project [webpage](#) to find out more details:

<https://www.transport.nsw.gov.au/projects/current-projects/nowra-bypass-and-transport-improvements-project-princes-highway-upgrade>

Email the project team: [nowrabypass@transport.nsw.gov.au](mailto:nowrabypass@transport.nsw.gov.au)

## What if I have questions about the Nowra Bridge?

During consultation, a four-lane bridge over the Shoalhaven River at Nowra was under construction and Transport heard community concerns over why the new bridge was prioritised over building a bypass.

Replacing the historic bridge and constructing a new bridge was identified as essential infrastructure to support access to, from, and through Nowra and Bomaderry. The project also supports the movement of vehicles and freight on the Princes Highway by removing over height and over overweight restrictions.

While the additional lanes, improved intersections and coordinated traffic signals will go some way to improving capacity and reducing congestion on the highway and surrounding local roads, construction of the new bridge does not prevent the future planning of a bypass.

For information about the Nowra bridge , please visit the Nowra Bridge Project page by clicking [here](#).