

# Temporary closure of the M4 Motorway westbound off-ramp from 9 February

**Prospect Highway Upgrade**  
February 2024



Australian Government



Transport for NSW acknowledges the Dharug people as the Traditional Custodians of the lands on which we work and pays respect to Elders past and present.

The Australian and NSW Governments are upgrading 3.6 kilometres of Prospect Highway between Reservoir Road, Prospect and St Martins Crescent, Blacktown to reduce congestion and to help meet future traffic demands on this corridor.

## What work are we doing?

Work includes:

- excavation and pavement demolition
- placement of materials
- pavement construction
- kerb and gutter installation
- line marking and barrier installation

## When and where we'll be working

We will carry out works on the M4 Motorway westbound off-ramp at Prospect Highway from **8pm Friday 9 February to 5am Monday 12 February** and **8pm Friday 16 February to 5am Monday 19 February** (weather permitting).

## Our work schedule

During this period, we will be working 24 hours a day to complete this work as quickly as possible.

## What will this mean for you?

The night work will involve some use of noisy machinery. We will make every effort to lessen the disturbance where possible by completing noisier work earlier in the evening and turning off vehicles when not in use.

## Traffic changes

To complete these works the M4 Motorway westbound off-ramp will be closed from **8pm Friday 9 February to 5am Monday 12 February** and **8pm Friday 16 February to 5am Monday 19 February** (weather permitting).

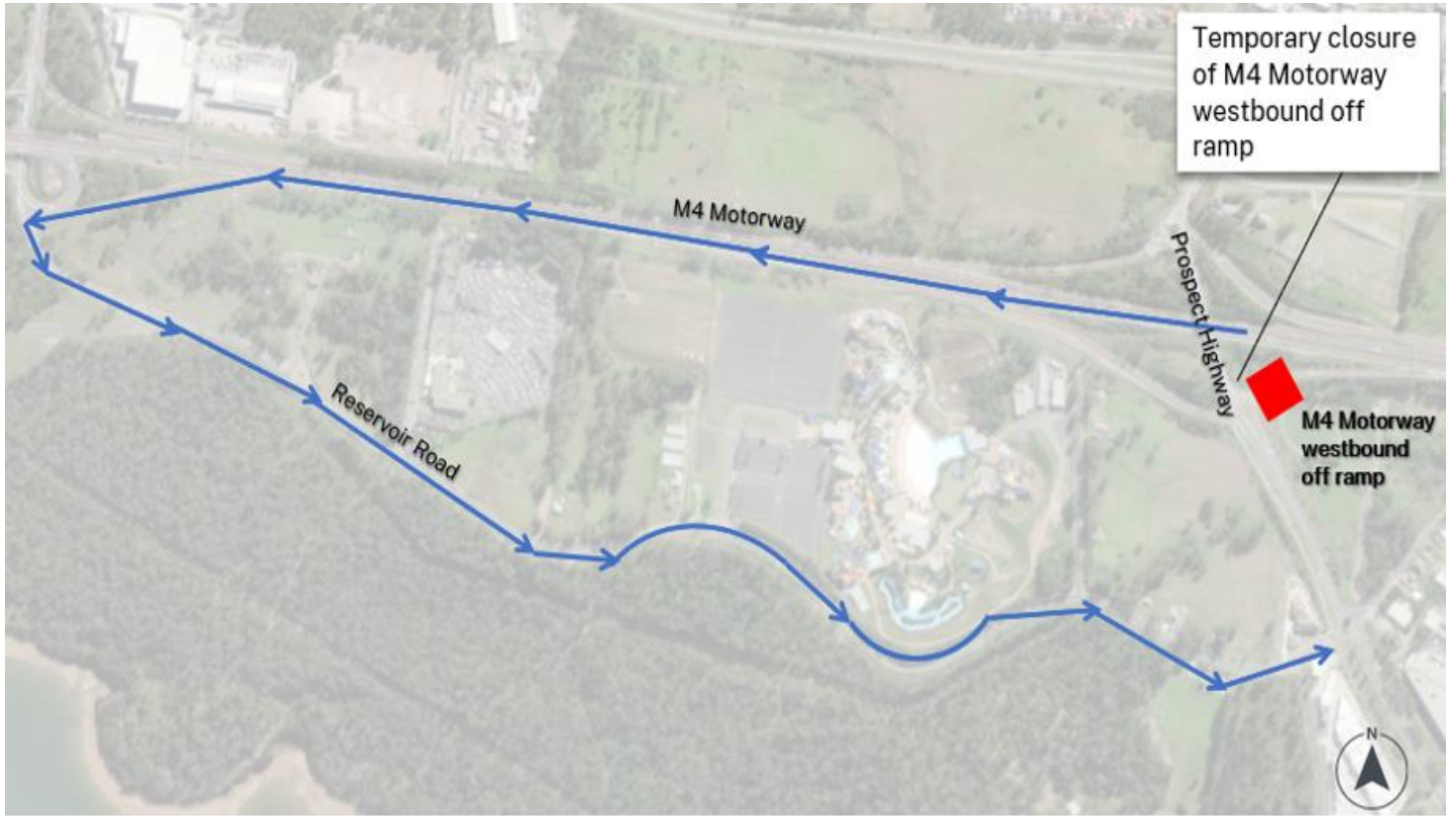
### Detour:



Motorists travelling along the M4 Motorway wanting to access the M4 Motorway westbound off-ramp at Prospect Highway will need to continue along the M4 Motorway and detour via Reservoir Road. This will add an extra six-minute travel time.

Electronic message signs will be activated in both directions. Traffic control will be in place during work hours for the safety of workers and road users.

Motorists should follow signs and the traffic controllers' direction and allow extra time as there may be minor delays.

## Location of work and detour



KEY  Work zone  Detour

### Contact us



1300 660 275 (during business hours)



[prospecthighway@fultonhogan.com.au](mailto:prospecthighway@fultonhogan.com.au)



[nswroads.work/prospecthighway](http://nswroads.work/prospecthighway)



Get project updates direct to your inbox.  
Scan the QR code or email your request.



### Interpreter service

For languages other than English call 131 450  
Punjabi • Hindi • Filipino • Arabic • Tamil

ਅੰਗਰੇਜ਼ੀ ਤੋਂ ਇਲਾਵਾ ਦੂਸਰੀਆਂ ਭਾਸ਼ਾਵਾਂ ਵਾਸਤੇ ਦੁਭਾਸ਼ੀਆ ਸੇਵਾ ਲਈ ਫ਼ੋਨ ਕਰੋ 131 450

अंग्रेज़ी के अतिरिक्त अन्य भाषाओं के लिए दुभाषिया सेवा  
131 450 पर कॉल करें

Para sa serbisyo ng interpreter sa ibang mga wika  
maliban sa Ingles, tumawag sa 131 450

لطلب خدمة الترجمة الشفهية للغات غير الإنجليزية اتصل  
بالرقم 131 450

ஆங்கிலம் தவிர்த்த ஏனைய மொழிகளுக்கான  
மொழிபெயர்த்துரைப்பாளர் சேவைக்கு அழையுங்கள் 131 450