

Out of hours geotechnical work along Pacific Highway from 3 March 2024

Pacific Highway upgrade through Wyong Town Centre

February 2024



Australian Government



Transport for NSW acknowledges the Darkinjung people as the Traditional Custodians of the lands on which we work and pays respect to Elders past and present.

The Australian Government and NSW Government are investing in the upgrade of the Pacific Highway through the Wyong Town Centre, to improve traffic flow, travel times and safety for all road users.

Transport for NSW is carrying out geotechnical investigations to help with planning for the upgrade of the Pacific Highway through Wyong Town Centre.

What work are we doing?

Geotechnical investigations will be occurring to assist with planning for the Pacific Highway Upgrade.

Work includes:

- Surveying and sampling locations
- Establishing temporary work sites
- Locating existing underground services
- Using machinery to cut into the road
- Work in and along the Wyong River
- Digging using geotechnical machinery including drill rigs, excavators, support trucks and associated hand tools.

When and where we'll be working

We will be working out of hours along the **Pacific Highway** between **Johnson Road** and **Cutler Drive** from **3 March to 14 April**, weather permitting.

Out of hours work will be required between **6pm to 5am, Sunday to Thursday** to minimise the impacts to traffic and the community.

Our staff will move through the area completing the work in separate sections. This will minimise overall disruption to residents, and we expect that you will only be disrupted for a few nights.

What will this mean for you?

Disruption may occur on local roads and footpaths. Reduced speed limits may be in place in some areas to ensure safety of staff and community members.

You may notice:

- Workers and vehicles
- Traffic controllers and signage
- Road closures and reduced speed limits
- Footpath closures
- Pedestrian and cyclist detours with traffic controllers on site to guide you
- Noise from machinery and equipment



Managing our impacts

We aim to manage our work to avoid impacts to the community and the environment.

This includes:

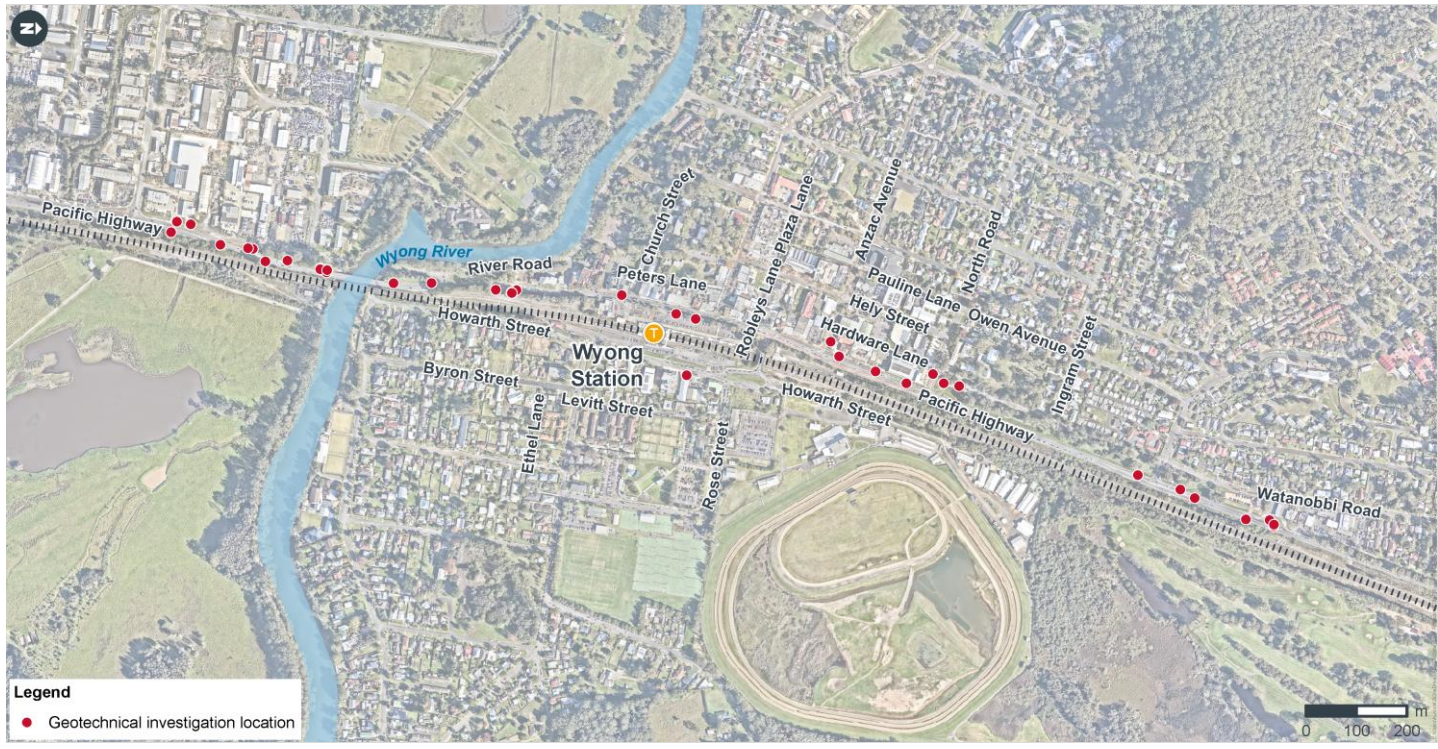
- Fencing for safety and security
- Reducing our noise as much as possible by using noise barriers to avoid disturbance to nearby residents

- Maintaining resident access
- Targeted lighting to minimise light spill
- Turning off machinery and vehicles when not in use.

We will ensure all locations are restored when our investigations are finished. Where possible, work will be carried out away from residents.

Thank you for your patience during this important work.

Location of work area



Contact us



24-hour Project Infoline **1800 864 889**



wtcproject@aecom.com



nswroads.work/wtc



For the latest traffic updates:

Call 132 701, visit livetraffic.com or download the app Live Traffic NSW



Interpreter service

For languages other than English call 131 450
Arabic • Greek • Hindi • Mandarin • Vietnamese

لطلب خدمة الترجمة الشفهية للغات غير الإنجليزية اتصل
بالرقم **131 450**

Για υπηρεσίες διερμηνείας σε άλλες γλώσσες εκτός από
τα Αγγλικά καλέστε το **131 450**

अंग्रेज़ी के अतिरिक्त अन्य भाषाओं के लिए दुभाषिया सेवा
131 450 पर कॉल करें

获取英语以外的其他语言口译协助服务可以致电**131 450**

Để có dịch vụ thông ngôn cho các ngôn ngữ khác tiếng
Anh, gọi số **131 450**

www.transport.nsw.gov.au/privacy-statement#Your_Privacy