

Parramatta Road Urban Amenity Improvement Program, Homebush

Early Consultation Report

March 2024



Acknowledgement of Country

Transport for NSW acknowledges the Wangal people of the Dharug Nation as the Traditional Custodians of the lands on which our project is situated, and pays respects to Elders past and present.

We recognise and celebrate Aboriginal people's continuous connection to Country and understand that if we care for Country – it will care for us.

Many of the transport routes we use today – from rail lines, to roads, to water crossings – follow the traditional Songlines, trade routes and ceremonial paths in Country that our nation's First Peoples followed for tens of thousands of years.

Transport for NSW is committed to honouring Aboriginal peoples' cultural and spiritual connections to the land, waters and seas and their rich contribution to society.



© Transport for New South Wales

Users are welcome to copy, reproduce and distribute the information contained in this report for non-commercial purposes only, provided acknowledgement is given to Transport for NSW as the source.

Table of Contents

- 1. Purpose of this report 5**

- 2. Project overview 6**
 - 2.1 Background6
 - 2.2 Our proposal.....6

- 3. Consultation approach 8**
 - 3.1 Consultation objectives.....8
 - 3.2 How we consulted you9

- 4. What we heard 9**
 - 4.1 Summary of feedback9
 - 4.2 Survey results..... 10
 - 4.3 How we considered your feedback 11
 - 4.4 Next steps 19

- 5. Appendix 20**

1. Purpose of this report

Transport is improving urban amenity along Parramatta Road, Homebush as part of the Parramatta Road Urban Amenity Improvement Program (PRUAIP). This project is currently in the planning phase of project delivery and a concept design has been developed for the project.

In mid-2023, the community were invited to have their say on the proposed concept design for the project. This report has been prepared to provide an overview of our communications and stakeholder engagement approach and to summarise the feedback received by Transport during community consultation. It will cover the following key topics:

- consultation objectives
- our consultation approach
- what we heard
- how your feedback was considered
- next steps for the project



2. Project overview

2.1 Background

The Parramatta Road Urban Amenity Improvement Program (PRUAIP) is a \$198 million initiative by the NSW Government to improve open space and active transport links along the Parramatta Road corridor.

PRUAIP is funded by the Department of Planning and Environment (DPE). Funding has been allocated to councils across six local government areas along the corridor, supporting 32 projects that will revitalise precincts between Camperdown and Granville. This program brings state agencies and local councils together to collaborate on projects to improve public amenities along the Parramatta Road corridor.

PRUAIP aims to deliver the following features:

- Streetscape upgrades including tree planting, multi-purpose lighting, new pavements, and north-south pedestrian and cycle crossings.
- Creation of new or improved open spaces, urban plazas and town squares, which are important in high-density environments.
- New walking and cycling links to key transport nodes and open spaces, which connect to strategic regional and local networks.

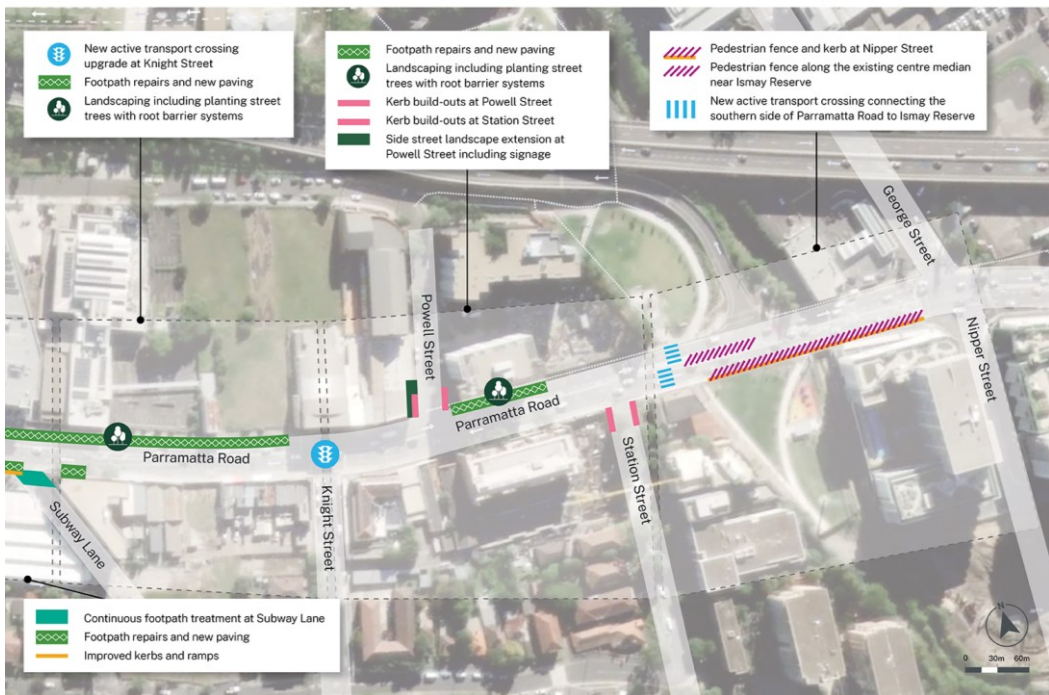
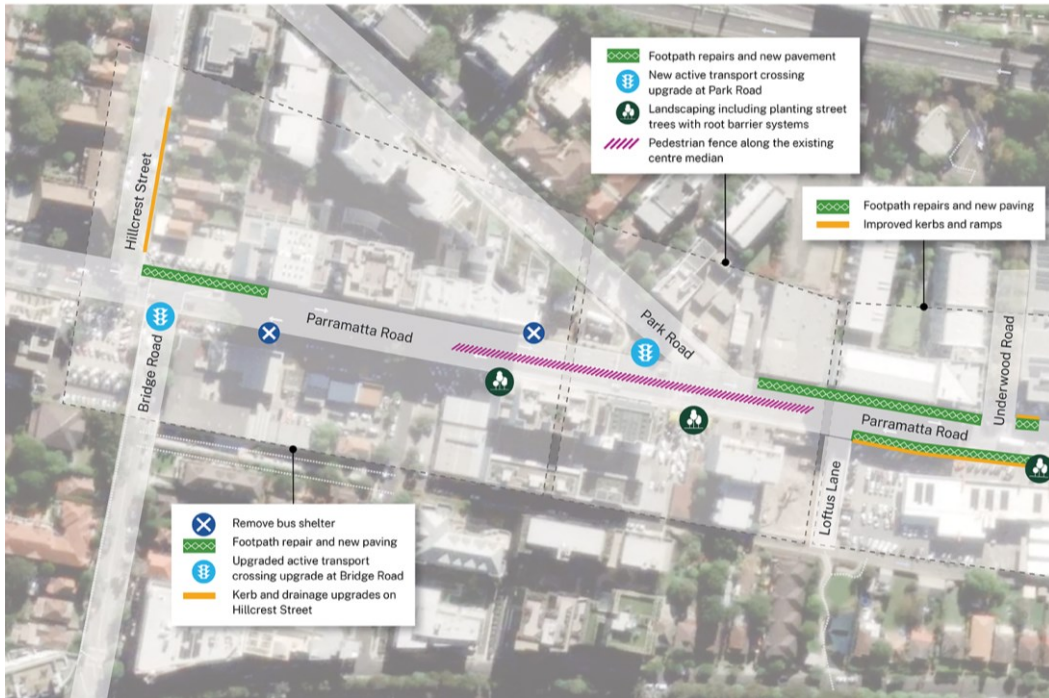
As part of this program, we are collaborating with Strathfield Council to deliver urban amenity improvements along Parramatta Road, Homebush. This is one of the projects being delivered within the Strathfield Local Government Area (LGA). To find out more about what Strathfield Council is doing, visit <https://www.strathfield.nsw.gov.au/develop/parramatta-road-urban-amenity-improvement-plan/>.

To learn more about PRUAIP, please visit DPE's website at <https://www.planning.nsw.gov.au/plans-for-your-area/infrastructure-funding/parramatta-road-urban-amenity-improvement-program>.

2.2 Our proposal

The proposed key features of this project include:

- upgrading pedestrian footpaths along the corridor
- building out Kerbs on Powell Street and Station Street reducing distance for pedestrians to cross the road
- new and improved pedestrian and cycling transport links in the area including a new signalised crossing
- removal of two decommissioned bus shelters on Parramatta Road near Bridge Road and Park Road
- improved landscaping including planting of trees
- pocket park on the corner of Park Street and Parramatta Road, enhancing public amenity with new landscaping and seating areas



3. Consultation approach

3.1 Consultation objectives

The purpose of this consultation was to seek early feedback on the proposed concept design for the project, before progressing further into environmental assessments and detailed design. While early consultation isn't a legislative requirement for project delivery, we proactively sought the community's feedback and input on what we are proposing.

Our key objectives were to:

- seek feedback, comment, ideas and suggestions on the proposed concept design to help inform the project design, including embedding any consultation outcomes into our environmental assessments
- gain community insights about Homebush as a place, and to better understand the communities needs and aspirations for this area
- ensure any consultation we do is meaningful by having a place-based focus as well as a project specific focus, and reporting back to the community on how their feedback has contributed to this project and potentially other future development opportunities in the area
- build a database of interested stakeholders whom we can continue to engage with.

3.2 How we consulted you

The concept design was on public display from Wednesday 23 August 2023 until 13 September 2023. During this time, we invited the community to provide feedback on the proposal and asked what their preferred ‘wish list’ was for the area. There were three ways in which community were able to have their say:

1. In person at one of our two face-to-face community information sessions
2. Online by completing our survey
3. Contacting us via phone or email.

We used a range of communication tools, methods and techniques to advertise this consultation process; a summary of the channels used are outlined in table 1.

Table 1. Communication methods and key details

Communication method	Key details
Transport’s project webpage	<ul style="list-style-type: none"> • Project webpage updated 23 August 2023 with latest project information including community update newsletter and links to our online survey.
Community update newsletter	<ul style="list-style-type: none"> • Delivered to 2500 residents and businesses in the local area of Homebush where he proposed work will be taking place.
Information sessions	<ul style="list-style-type: none"> • Session 1 was held on Saturday 26 August between 10am to 1pm at Ismay Reserve Park, Parramatta Road. • Session 2 was held on Thursday 31 August between 10am to 1pm at Bakehouse Quarters, 22 George Street, North Strathfield.
Static poster display	<ul style="list-style-type: none"> • 6 project posters were on display in the area during the consultation period. These were installed near busy locations including Strathfield Station.
Online survey	<ul style="list-style-type: none"> • An online survey was developed to seek feedback on the concept design and ideas for the area. This survey contained 4 key questions. Additionally, we sought feedback on the community’s sentiment around feeling safe in their community.
Email	<ul style="list-style-type: none"> • An email was distributed to key businesses in the area, inviting them to have their say on the proposal.
Social media	<ul style="list-style-type: none"> • A Facebook post was published live between 23 August and 2 September 2023, to raise awareness

	<p>about the public consultation and to direct stakeholders to our website to find out more information.</p> <ul style="list-style-type: none"> • The Facebook ad was geo-targeted to the following suburbs: Homebush, Strathfield, Burwood, Concord and Concord West.
Graphic, images and maps	<ul style="list-style-type: none"> • A map was developed to outline the key features of the project and their proposed locations. • An interactive map was developed for online platforms. • Images of the existing area were also used.

4. What we heard

4.1 Summary of feedback

We had many meaningful conversations with local residents, businesses, commuters and visitors and valued what each person had to say. We received 56 submissions during the consultation period including:

- 1 phone call
- 4 emails
- 46 online surveys completed
- 5 comments received in person
- 30 interactions at pop up sessions

We also received 477 link clicks, 17 reactions, 14 comments and three shares on Facebook.

Feedback indicated a positive overall sentiment towards the proposal and also highlighted a few concerns from the community. The most popular feature proposed is a new signalised crossing providing a connection to Ismay Reserve, however, some feedback questioned the benefit of a new crossing and the potential impacts it will have on road congestion and pedestrian safety.

Quotes from the community:

“More trees, active transport links. Good community spirit.”

“State government leadership in urban planning.”

“With the odd mix of some new buildings and some dilapidated buildings/pathways I think some repairs and landscaping would go a long way.”

“I like that the project is thinking about the pedestrians.”

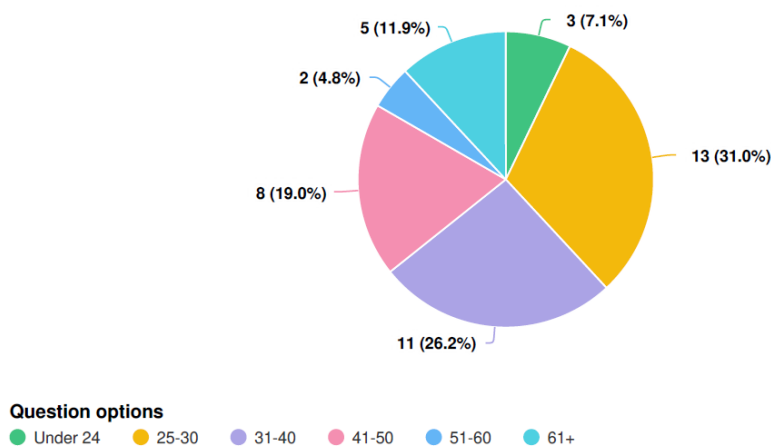
The key themes we heard include:

- **Urban amenity:** many suggestions were received on how we can enhance the overall urban amenity of the area, including but not limited to: more open spaces, more public artwork, more trees and vegetation, more seating options, new designated facilities for dog owners, more streetlights, improved pathways and more businesses.
- **Public transport:** requests for more public transport options in the area and improved access to current timetables.

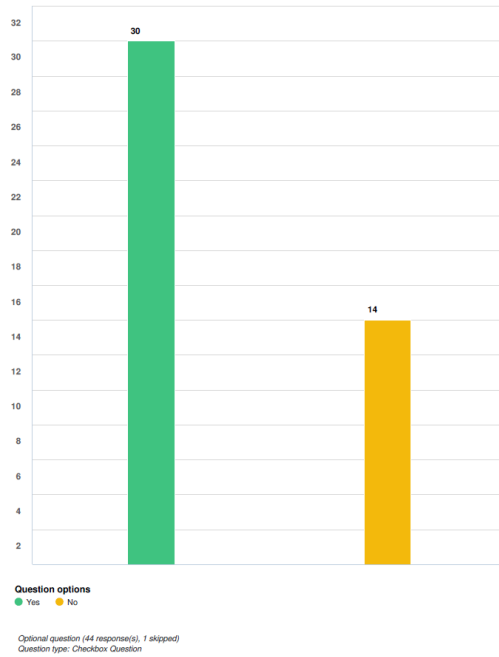
- **Active transport:** many requests to improve active transport links along Parramatta Road.
- **Safety:** feedback and suggestions were received on how to make the area feel safer including installing lights, installing CCTV, reducing speed limits on roads, improving footpaths, improving active transport links and more.
- **Traffic (general):** local community members expressed ongoing concerns for congestion along Parramatta Road and other busy road corridors in the area. Suggestions were made to reduce toll costs to encourage more motorists onto key motorways such as WestConnex rather than local or state roads. General concerns for safety were raised for those walking and riding along busy roads.
- **Traffic (WestConnex M4 Motorway):** feedback and suggestions were received in relation to the recently delivered WestConnex M4 motorway and how we could potentially reduce congestion along Parramatta Road. This includes reducing toll costs, encouraging more motorists onto major motorways and improving traffic flow from Parramatta Road onto the M4 on ramp by converting the right-hand turn from two lanes to one lane only.
- **Maintenance:** ongoing maintenance of the existing and the proposed new assets plays an important role in the overall urban amenity and feel of place. This includes filling empty shop fronts, improving drainage issues and maintaining the cleanliness of assets such as vegetation, footpaths, public amenities and more.
- **Environmental impacts:** community members expressed concerns for the current issues faced on a global scale as a result of climate change and global warming. Feedback received questioned some features proposed and whether it will contribute to improving these issues and improving the local community's health and wellbeing.
- **Place-based outcomes:** we also gained insights into current challenges the local community face and their needs and aspirations. Most requests related to improving traffic congestion on local roads surrounding Parramatta Road and ideas to improve the overall amenity for locals. A major concern for community is that the existing infrastructure and services available won't be able to support the area's population growth.

4.2 Survey results

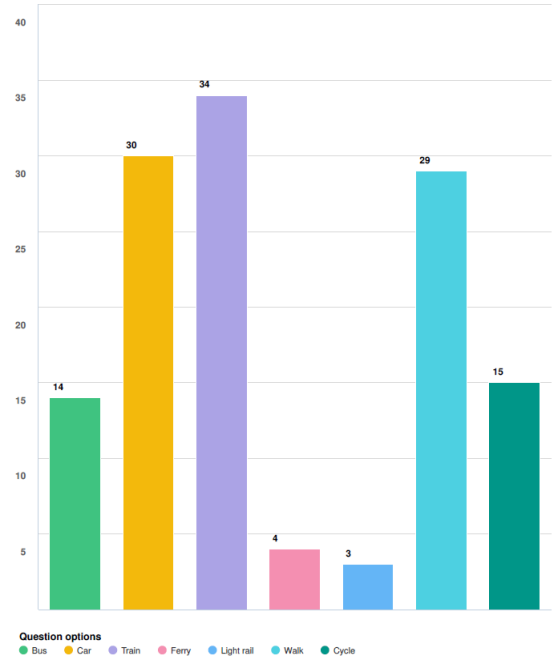
Age



Do you feel safe in your area?



What type of transport do you usually use?



4.3 How we considered your feedback

To ensure this engagement was meaningful, Transport has analysed the feedback from a place perspective as well as a project perspective. We have collaborated across Government agencies and made every effort to provide a holistic response to feedback where feasible.

Some place-based feedback couldn't be answered at this point in time as it requires further consideration or investigation by relevant Government bodies. This feedback has been noted by Transport and shared anonymously with relevant Government bodies for consideration during future planning.

An overview of the feedback received and Transport's response is outlined below in Table 2.

Table 2. Overview of feedback and Transport's response.

Summary of feedback	Project or place outcomes	Transport's response
Project need and cost		

<p><i>“Why does this project cost \$200 million? It seems we are not benefitting much for this amount of money...”</i></p>	<p>Project</p>	<p>PRUAIP is a \$198 million NSW Government program led by DPE. This funding has been allocated to councils across six local government areas along the Parramatta Road corridor, supporting 32 projects that will revitalise the precincts between Camperdown and Granville.</p> <p>Strathfield Council has been allocated funding for five projects as part of this program. Transport has been engaged by council to deliver urban amenity improvements along Parramatta Road, Homebush, as part of this program.</p> <p>To find out more about what Strathfield Council is doing, visit https://www.strathfield.nsw.gov.au/develop/parramatta-road-urban-amenity-improvement-plan/.</p>
<p>Urban amenity</p>		
<p><i>“More artwork please”</i></p>	<p>Project</p>	<p>Public art plays an important role in creating a sense of place when it responds to the surrounding environment in both a physical and thematic sense.</p> <p>A public art framework was developed as part of PRUAIP, as a guide for councils along the Parramatta Road corridor. Use of the framework will ensure an integrated and collaborative approach is taken when creating and commissioning public artworks for installation along the corridor.</p> <p>To read the framework, visit https://www.planning.nsw.gov.au/sites/default/files/2023-03/public-art-framework-parramatta-road-urban-amenity-improvement-program.pdf.</p> <p>This framework provides councils with a curatorial approach for the corridor as a whole. It is aligned to the objectives of the PRUAIP and local communities will benefit culturally, socially and economically from great public art in the corridor.</p> <p>Strathfield Council will be commissioning three public art projects in relation to the PRUAIP projects. The council is currently considering options to commission public art along the corridor and surrounding streets. Three locations along Park Road, Hillcrest and Station Street have been identified as potential options to enable public artworks.</p> <p>For more information about public art opportunities, visit https://www.strathfield.nsw.gov.au/develop/parramatta-road-urban-amenity-improvement-plan/.</p>
<p><i>“More open spaces, more parks, more public amenities”</i></p>	<p>Project and Place</p>	<p>The corner of Park Road and Parramatta Road has been identified as a potential area to provide a new pocket park. Transport is currently investigating options to return this area to the community as a new open space, as part of this project. Pending approvals, community feedback will be sought which will inform the design. We will keep you informed as we learn more.</p>
<p><i>“-concept design isn’t specific enough (e.g. what type of trees? How many? etc)”</i></p>	<p>Project</p>	<p>This project is currently in the concept design phase. A concept design provides a high-level overview of what we are proposing to do.</p> <p>The aim of this consultation was to seek early feedback on the concept design which focuses on the key features proposed by Transport. The key features include new and improved active transport crossings, bus shelter removals, footpath upgrades and improved landscaping along the corridor. All feedback received</p>

		<p>during early consultation has been considered and will help inform the project design.</p> <p>Once a concept design is developed, the project will undergo environmental assessments to understand the current environment and the potential impacts of the proposal should it be delivered. Pending planning approval, the project will progress into detailed design. At this time, we will consider the finer urban design elements and technical details for the project. For example, the type of trees used, their size and how many can be planted within the project area.</p> <p>We may invite the community to provide further feedback later. We will keep you informed as the project progresses.</p> <p>To keep informed about this project and how it progresses, visit Parramatta Road Urban Amenity Improvements (PRUAIP) Transport for NSW</p>
<p><i>“more trees planted and more grass would benefit in terms of urban amenity, climate change and overall health and wellbeing”</i></p> <p><i>“not sure if tree planting will achieve anything”</i></p>	Project	<p>We acknowledge the potential benefits open spaces, trees and biodiversity may provide to communities. As part of our environmental responsibilities, we are considering climate change impacts in all of our decision making, leading to resilient and environmentally sustainable transport solutions.</p> <p>Our Future Transport Strategy outlines our key focus, which is to achieve net zero emissions across the State by 2050, ensure there’s a net increase in urban trees and there’s no net loss of biodiversity. We aim to achieve this through green power purchase agreements, by rolling out new battery-electric buses and recycled and low-carbon building materials, and by finding opportunities to plant more trees and return open spaces to the community. This will provide greater urban amenity and cleaner air, and reduce urban heat.</p> <p>As part of this project, we are investigating options to provide a new pocket park on the corner of Park Road and Parramatta Road. This presents an opportunity to provide a new open space to the community which may include more seating, shelter, trees, public art and more. We’re also proposing to install trees along this section of the corridor where feasible to do so.</p> <p>The type and number of trees planted will depend on key environmental factors such as the location, amount of space available, soil quality, road user safety, existing infrastructure such as utilities and overhead wires, and more. We are currently in the concept design phase of project planning. The next step is to complete an environmental assessment where we will gain a better understanding of the constraints and opportunities for planting new vegetation and trees.</p>
<p><i>“Will grassy verges be removed to support ‘improved footpaths’?”</i></p>	Project	<p>We aim to retain as much vegetation and preserve as much natural landscape where feasible. However, footpaths may need to be widened to meet compliance with current accessibility standards which often requires removal of vegetation and/or trees.</p> <p>Feedback has been noted and will be considered during further environmental assessments as part of this project.</p>
<p><i>“More dog parks, dog bags and bins”</i></p>	Place	<p>We acknowledge the benefits that designated pet facilities and resources may provide for pet owners and the wider community. Feedback has been noted and shared anonymously with Strathfield Council for their consideration during future planning.</p>

<p><i>“Why remove the bus shelters?”</i></p> <p><i>“Replacing the bus shelters will be a waste of money”</i></p> <p><i>“the existing bus shelters serve a purpose; they provide people a place to sit and rest on the way to key destinations”</i></p> <p><i>“How will people get about if the bus stops are removed?”</i></p>	<p>Project</p>	<p>The existing bus shelters along Bridge Road and Park Road are no longer in use and are non-compliant with current standards. As such, Transport is proposing to remove the bus shelters to improve pedestrian access and the local urban amenity. No bus services will be impacted by this project.</p> <p>We acknowledge the benefits bus shelters may provide despite their intended purpose. Transport is investigating options to provide a new pocket park on the corner of Park Road and Parramatta Road. This presents an opportunity to provide a new open space to the community including more seating options along the corridor. We will keep you informed as the design progresses.</p> <p>Existing bus, train and ferry services are available in your area. To plan a trip, please visit transportnsw.info.</p>
<p>Public transport</p>		
<p><i>“A bus service could be good”</i></p> <p><i>“Have current timetables at bus stops”</i></p> <p><i>“Put a Strathfield connector timetable up so people can learn about its operations”</i></p> <p><i>“There isn’t enough public transport and this change won’t help”</i></p>	<p>Place</p>	<p>Existing bus, train and ferry services are available in the area, connecting people to key destinations across Greater Sydney and Regional NSW. This project aims to improve local urban amenity along Parramatta Road and will not impact any existing public transport options available.</p> <p>Information on bus services can be found by visiting transportnsw.info.</p> <p>The new Sydney Metro West will provide an additional public transport option between Greater Parramatta and the Sydney CBD. This includes new metro stations at Sydney Olympic Park, North Strathfield and Burwood. For more information visit https://www.sydneymetro.info/west/project-overview.</p>
<p>Active transport (e.g. walking, bike riding, skate boarding, roller blading and more)</p>		
<p><i>“What is active transport?”</i></p>	<p>Project and Place</p>	<p>Active Transport is a term used by NSW Government to promote walking and bike riding (or cycling) as a viable, safe and efficient transport option for short and long trips within NSW. Active transport crossings aim to provide safer journeys for pedestrians and cyclists.</p> <p>Transport's Active Transport Strategy December 2022 provides a plan to guide investment and priority actions for active transport across NSW, drawing upon the Future Transport Strategy and its vision for walking, bike riding and personal mobility. To find out more about what Transport is doing to improve walking and bike riding in NSW, visit https://www.transport.nsw.gov.au/operations/active-transport</p>
<p><i>“More bike lanes, wider shared user paths, more protected bike lanes or paths and separate</i></p>	<p>Place</p>	<p>Given the constrained road environment along Parramatta Road, achieving dedicated cycle lanes on Parramatta Road would require the re-allocation of current general traffic lanes. The re-allocation of general traffic lanes is beyond the scope of this project.</p>

<p>cycling from walking”</p> <p>“More bike lanes connecting to key destinations e.g. connecting Homebush to Olympic Park”</p> <p>“Would love to see designated bike lanes along Parramatta Road”</p> <p>“make Parramatta Road a local road again, and reallocate existing lanes to other modes of transport”</p>		<p>The Parramatta to Sydney Foreshore Link is a program of works that will deliver Sydney’s longest walking and bike riding route.</p> <p>The 91km continuous link will connect Parramatta Park to the Opera House and Botanical Gardens allowing both pedestrians and bike riders to travel along large parts of Sydney’s iconic foreshore.</p> <p>The program will initially focus on progressively planning and delivering early delivery works projects. The long-term plan to complete the Link is proposed to include upgrades to existing sections of path, as well as filling in missing links over time to create a continuous route, subject to planning approvals and funding decisions.</p> <p>To find out more on the Parramatta to Sydney Foreshore link visit https://www.transport.nsw.gov.au/projects/current-projects/parramatta-to-sydney-foreshore-link</p> <p>Transport and local councils are working collaboratively to improve active transport links across Greater Sydney. For more information visit www.transport.nsw.gov.au/operations/active-transport</p>
<p>“More signalised pedestrian crossings along Parramatta Road”</p> <p>“Existing signalised crossings don’t allow pedestrians enough time to cross the road”</p>	<p>Place and Project</p>	<p>As part of this project, Transport is proposing to improve three existing crossings along Parramatta Road and install a new signalised crossings at Ismay Reserve. These new and improved crossings will connect pedestrians and cyclists to key active transport links in the area.</p> <p>All pedestrian crossings will be checked to ensure the phasing and timing of signals are compliant with current standards and allow sufficient time for traffic to flow safely and efficiently.</p> <p>Transport’s Active Transport Strategy December 2022 provides a plan to guide investment and priority actions for active transport across NSW, drawing upon the Future Transport Strategy and its vision for walking, bike riding and personal mobility.</p> <p>To find out more about what Transport is doing to improve walking and bike riding in NSW, visit www.transport.nsw.gov.au/operations/active-transport</p>
<p>“Upgrade footpaths on local roads including Loftus Crescent”</p> <p>“The Raw Square footpath needs upgrading”</p>	<p>Place</p>	<p>This is currently outside the scope of this project. We have taken these comments on board and will ensure they are provided to the relevant team in that area.</p>
<p>Traffic (General)</p>		
<p>“There’s a lot of traffic under the railway bridge (Arnott’s bridge) - will the additional pedestrian crossing make it worse?”</p>	<p>Project</p>	<p>Transport is proposing to improve three existing crossings along Parramatta Road and install a new signalised crossings at Ismay Reserve. These new and improved crossings will connect pedestrians and cyclists to key active transport links in the area.</p> <p>All pedestrian crossings will be checked to ensure the phasing and timing of signals are compliant with current standards and allow sufficient time for traffic to flow safely and efficiently.</p>

<p><i>“No more traffic lights or crossing needed, just improve the ones that are there”</i></p> <p><i>“The Ismay Reserve crossing will make existing traffic worse”</i></p> <p><i>“the traffic lights in this area need to be reassessed to improve traffic flow”</i></p>		<p>In addition, transport will also be upgrading existing pedestrian crossings with compliant kerb ramps for customer safety.</p>
<p><i>“You ignore the much needed changes required on Parramatta Road to reduce congestion”</i></p> <p><i>“Too many lights from Bridge Road to George Street”</i></p> <p><i>“walking along Parramatta Road or crossing this road is unsafe”</i></p> <p><i>“Can’t you build a footbridge instead of installing a new crossing?”</i></p>	<p>Place</p>	<p>Your feedback has been noted by Transport and shared anonymously with relevant government bodies for consideration during future planning for the area. We thank you for taking the time to participate in this consultation. Your feedback is important to us and may inform future decisions being made in your area.</p> <p>Transport for NSW has a vision to revitalise Parramatta Road as a multimodal transport corridor, that better connects thriving, vibrant, liveable centres to places of work and leisure.</p> <p>In the short term, Transport will continue to implement initiatives to strengthen dedicated bus priority, through existing rolling programs, such as the Bus Priority Infrastructure Program. These initiatives will prioritise public transport, providing the vital first step towards a choice to use more sustainable travel modes. Making it easier for people to catch buses will encourage more people onto public transport, easing congestion on our roads. For more information of the Parramatta Road Vision visit:</p> <p>https://www.transport.nsw.gov.au/projects/current-projects/parramatta-road-vision</p>
<p><i>“we need a pedestrian crossing at Powells Creek M4 on ramp – there is a high demand for this”</i></p>	<p>Place</p>	<p>We have taken these comments on board, and have provided them to the relevant technical teams for consideration in the future.</p>
<p><i>“Significant improvements to the Concord Rd and Parramatta Road intersection needs to be made to reduce congestion”</i></p>	<p>Place</p>	<p>We have taken these comments on board, and have provided them to the relevant technical teams for consideration in the future.</p>
<p><i>“I don’t like you turning Powell Street into a one way street”</i></p>	<p>Place</p>	<p>Transport is not proposing to turn Powell Street into a one-way street as part of this proposal. Feedback has been noted.</p>
<p>Traffic (M4 on ramp)</p>		

<p><i>“M4 on ramp has made traffic worse by creating less space for cars travelling along Parramatta Rd”</i></p> <p><i>“the opening of M4 and underground tunnel to Haberfield has done nothing to improve traffic in this area”</i></p> <p><i>“M4 price needs to come down to get cars off Parramatta Road”</i></p> <p><i>“M4 turn off through Strathfield should be reduced to one lane only”</i></p> <p><i>“wasn’t there meant to be a shared user overpass over Parramatta Road as part of the M4 upgrade?”</i></p>	Place	As this is currently out of the scope of this project, we have passed this feedback to the relevant teams within Transport for consideration.
Safety		
<p><i>“More street lights, well lit crossings, improved lighting at train stations and well lit footpaths will make me feel safer”</i></p>	Place	<p>Parramatta Road is a State road managed by Transport for NSW.</p> <p>Local streets adjacent to Parramatta Road are managed by council. Your feedback has been noted and shared anonymously with Strathfield Council for consideration during future planning for your area.</p> <p>Transport will also conduct a review of the streetlighting along Parramatta Road to identify locations where streetlighting does not meet current requirements and then consider options in these areas.</p>
<p><i>“Reduce the speed limit along Parramatta Road”</i></p> <p><i>“slower traffic will make me feel safe walking along Parramatta Road”</i></p>	Place	We have passed this information onto our teams in Network Safety and Services.
<p><i>“make sure trees don’t block</i></p>	Project	As part of this project, we are proposing to install trees along this section of the corridor where feasible to do so. The type and

<p>traffic and signage”</p>		<p>number of trees planted will depend on key environmental factors such as the location, amount of space available, soil quality, road user safety, existing infrastructure such as utilities overhead wires, and more.</p>
<p>Maintenance</p>		
<p>“There’s drainage issues on Parramatta Road, please repair road by Ismay Reserve as surface keeps braking causing large puddles”</p>	<p>Place</p>	<p>Transport has noted this feedback as the asset owner. We will consider conducting a review of the current road conditions and drainage issues. This will be managed as part of Transport’s ongoing maintenance program. Improvements to drainage will not be considered as part of this project.</p>
<p>Make sure any new assets (e.g. trees, footpaths and more) are well managed”</p>	<p>Place</p>	<p>All transport assets are managed as part of the Transport’s ongoing maintenance program.</p>
<p>Environmental impacts</p>		
<p>“We need more trees and parklands to offset heat and to address climate change, trees improve air quality, provide shade and supports wildlife, more concrete footpaths and roads lead to more heat generated and risk of flooding, the proposal doesn’t reduce traffic, pollution, noise, rubbish, run off and more”</p>	<p>Place</p>	<p>At Transport, we acknowledge the challenges of climate change facing communities today and we are currently taking steps to address this issue. We also acknowledge the potential benefits open spaces, trees and biodiversity may provide to communities.</p> <p>As part of our environmental responsibilities, we are considering climate change impacts in all of our decision making, leading to resilient and environmentally sustainable transport solutions.</p> <p>Our key focus is to achieve net zero emissions across the State by 2050, ensure there’s a net increase in urban trees and there’s no net loss of biodiversity. We aim to achieve this through green power purchase agreements, by rolling out new battery-electric buses and recycled and low-carbon building materials, and by finding opportunities to plant more trees and return open spaces to the community. This will provide greater urban amenity and cleaner air, and reduce urban heat.</p> <p>Our <i>Future Transport Strategy</i> outlines our strategic plans to address these issues today. To learn more, visit www.future.transport.nsw.gov.au</p> <p>As part of this project, Transport is investigating options to provide a new pocket park on the corner of Park Road and Parramatta Road. This presents an opportunity to provide a new open space to the community including more seating options along the corridor. We will keep you informed as we learn more.</p> <p>We are also proposing to install trees along this section of the corridor where feasible to do so. The type and number of trees planted will depend on key environmental factors such as the location, amount of space available, soil quality, road user safety, existing infrastructure such as utilities and overhead wires, and more. The next step is to complete an environmental assessment where we will gain a better understanding of the environmental constraints and opportunities for retaining, removing or planting new vegetation.</p>

4.4 Next steps

We have considered all submissions for this proposal and we will ensure that issues highlighted by stakeholders and the community are appropriately addressed throughout the delivery of the project.

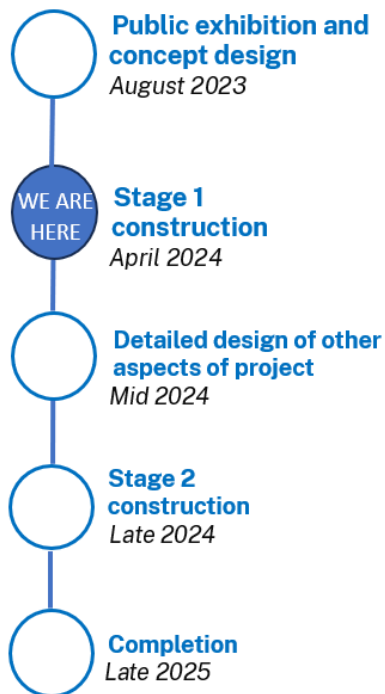
The first stage of delivery for this project will be a signalised crossing on Parramatta Road to improve connectivity to and from Ismay Reserve and Homebush Station.

A notification will be sent to the community to provide information before the work starts.

The next step for this project is to undertake environmental assessments to better understand the potential impacts the proposal will have on the current environment. We may need to undertake further consultation as the project progresses through environmental approvals and detailed design.

During this time, the proposal may change based on feedback received by the community, key findings during environmental assessments and further investigations.

Proposed timeline



We thank you for taking the time to participate in this consultation and for being respectful to us and others during this time. We also want to thank you for your patience while we evaluated your feedback and prepared this report. Your feedback is important to us and may help inform future decisions being made in your area.

We hope this information has been helpful and gives you a clearer understanding of how we evaluated your feedback and what we plan to do next. Should you have any questions about this report or if you have any feedback about how we can make our communications and engagement activities more meaningful, please contact us by calling **1800 684 490** or email parramattaroad.improvements@transport.nsw.gov.au.

5. Appendix

Community notification

Transport for NSW

Have your say

Parramatta Road Urban Amenity Improvements (PRUAIP)

You're invited to have your say on the proposed urban amenity improvements along Parramatta Road, Homebush. What do you wish for in your community? Your voice matters to us - it will help inform the design.

August 2023



Transport for NSW acknowledges the Wangal people of the Dharug Nation as the Traditional Custodians of the lands on which we work and pays respect to Elders past and present.

The Parramatta Road Urban Amenity Improvement Program (PRUAIP) is a \$198 million initiative by the NSW Government to improve open space and active transport links along the Parramatta Road corridor.

We are collaborating with Strathfield Council to deliver urban amenity improvements along Parramatta Road, Homebush as part of this program.

We are currently seeking feedback on the concept design. Pending approval, the project is expected to be completed by late 2024.

What are we proposing to do?

The proposed key features of the project includes:

- upgrading pedestrian footpaths along the corridor
- increasing the size of the kerb along Powell Street and Station Street
- new and improved pedestrian and cycling transport links in the area including new signalised crossing
- removal of two bus shelters along Bridge Road and Park Road
- improved landscaping including planting of trees



Have your say

We invite the community to provide feedback on the concept design from now until **5pm Wednesday 13 September 2023**.

Feedback can be provided in three ways:

1. **In person** at one of our upcoming information sessions
2. Complete our online survey at nswroads.work/pruaip
3. Contact us via phone or email.

To view the concept design, please scan the QR code or visit nswroads.work/pruaip



Location of work area



What feedback are we looking for?

We are seeking feedback on the proposal and we would also love to hear your ideas for Parramatta Road.

Feedback from the community may inform the project design and help us understand what you want to see more of in this area.

Information sessions

If you would like to have your say in person, two community information sessions will be held. These sessions will provide further detail regarding the concept design, and members of the project team will be available to answer any questions from the community. Information at these sessions will be the same.

Session 1	Session 2
Date Saturday 26 August	Date Thursday 31 August
Time 10am - 1pm	Time 10am - 1pm
Location Ismay Reserve Park	Location Bakehouse Quarter 22 George Street, North Strathfield

Contact Us

To provide feedback or learn more about this project, please call us on **1800 684 490** or email ParramattaRoad.Improvements@transport.nsw.gov.au.

Interpreter service

For languages other than English call 131 450
 Arabic • Greek • Hindi • Mandarin • Vietnamese
 لطلب خدمة الترجمة الشفهية للغات غير الإنجليزية اتصل
 بالرقم 131 450
 Για υπηρεσίες διαρμηνείας σε άλλες γλώσσες εκτός από
 τα Αγγλικά καλέστε το 131 450
 अंग्रेजी के अतिरिक्त अन्य भाषाओं के लिए दुरभाषिया सेवा
 131 450 पर कॉल करें
 获取英语以外的其他语言口译协助服务可以致电131 450
 Để có dịch vụ thông ngôn cho các ngôn ngữ khác tiếng
 Anh, gọi số 131 450

Want to learn more about projects in your area?

The Portal is your one stop shop for Transport projects in Bayville, Burnwood, Concord Bld, Inner West and Strathfield Council areas.

[www.transport.nsw.gov.au/portal](https://transport.nsw.gov.au/portal)

Online survey



You're invited to have your say on the proposed urban amenity improvements along Parramatta Road, Homebush. What do you wish for in your community?

Your voice matters to us - it will help inform the **design**

Transport for NSW acknowledges the **Waaqaal** People of the **Dharug** nation as the traditional custodians of the land and this project will take place on.

Take our online survey or meet us in [person](#)

Opens: Wednesday 23 August 2023

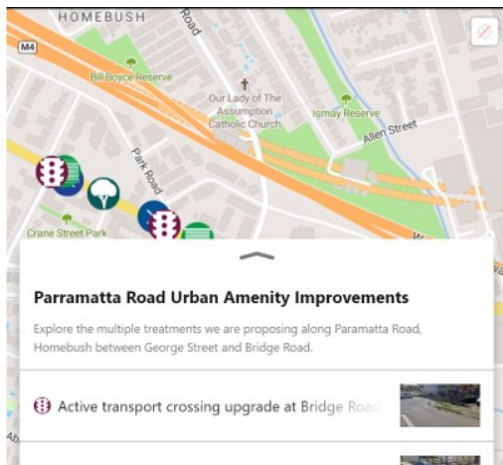
Closes: Wednesday 13 September 2023

The Parramatta Road Urban Amenity Improvement Program (PRUAIP) is a \$198 million initiative by the NSW Government to improve open space and active transport links along the Parramatta Road corridor.

We are collaborating with Strathfield Council to deliver improvements along Parramatta Road as part of this program.

Key features:

- upgrading pedestrian footpaths
- increasing the size of the kerb along Powell Street and Station Street
- four improved active transport links including installation of new signalised [crossings](#)
- removal of bus shelters between Bridge Road and Park Road
- improved landscaping including planting of [trees](#)



Improved amenity - What would you like to see in your community?

Take our survey below.

What happens next?

The concept design is now open for community feedback and will remain open until **Wednesday 13 September**.

Pending approval, detailed design and construction is expected to commence from late 2023.




Contact us
1031 054 400
transport@transport.nsw.gov.au

Facebook post

NSW Road Safety - NSW GOV
23 August 2023 · 🌐


👉 Join our info sessions or take our survey to have your say on improving urban amenity along Parramatta Rd, Homebush! 🗣️👉



Have your say

Sat 26 August | 10am-1pm | Ismay Reserve Park, Parramatta Rd

Thursday 31 August | 10am - 1pm | Bakehouse Quarter 22 George Street, North Strathfield



[YOURSAY.TRANSPORT.NSW.GOV.AU](https://yoursay.transport.nsw.gov.au)

Improving Parramatta Rd, Homebush 🗣️ [Learn more](#)

Have your say on the proposed urban amenity improvements along Parrama...

👍👎🗣️ 17 19 comments 3 shares

👍 Like 💬 Comment ➦ Share