

You must select a suitable inspection site to conduct a mobile safety check inspection by using the risk assessment in the R-Safety app and ensuring the site is in accordance with the Supplementary AIS Business Rules for mobile inspections.

Rule 2.03m	<p>An examiner must conduct a site risk assessment of the inspection area and brake test location before commencing each inspection to ensure suitability of the site to carry out the inspection.</p> <p>A Risk Assessment template is available in the R-Safety application.</p> <p>Inspections and brake tests must be conducted:</p> <ul style="list-style-type: none">• on a sealed hard level surface (such as concrete or asphalt) suitable for the vehicle being inspected• on a site clear of any obstructions with sufficient room to allow for the boot, bonnet, and doors of the vehicle to be fully opened and Safety Check standards to be inspected• within daylight hours (one-half hour before sunrise and one-half hour after sunset) <p>An examiner must not conduct a vehicle inspection and brake test:</p> <ul style="list-style-type: none">• at or near pedestrian crossings or in areas with high pedestrian activity (for example a strip shopping area, shopping centre or business premises) or near other sensitive land uses• in breach of any parking restriction or other road rules
-------------------	---

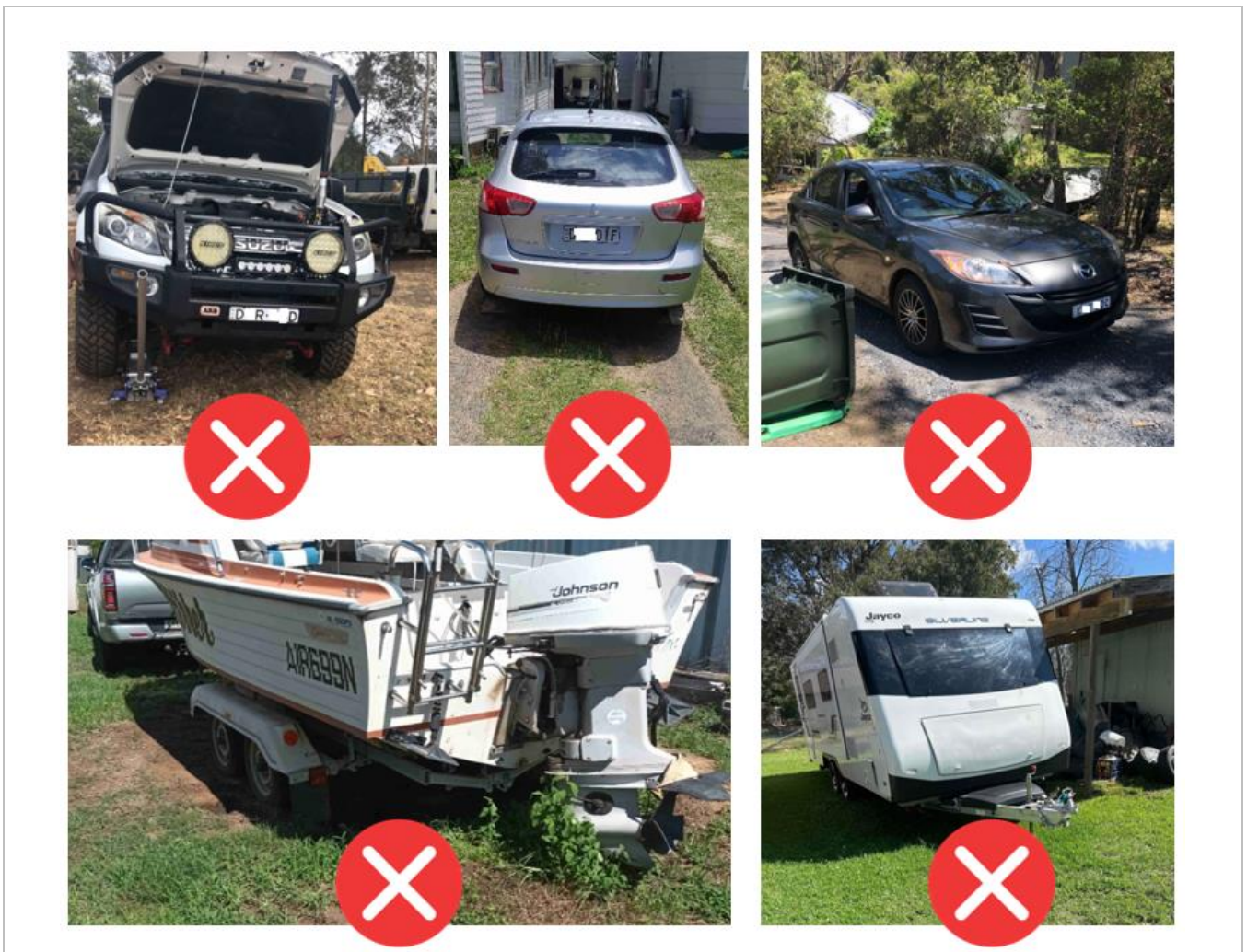
If an inspection site is not suitable, you must identify another suitable site or refer the customer to a fixed AIS station for the safety check inspection.

Suitable inspection site



Tip – you must select an inspection area that is on a sealed hard level surface such as concrete or asphalt.

Unsuitable inspection sites



Note – you must not inspect a vehicle on grass, unsealed, or uneven surfaces.